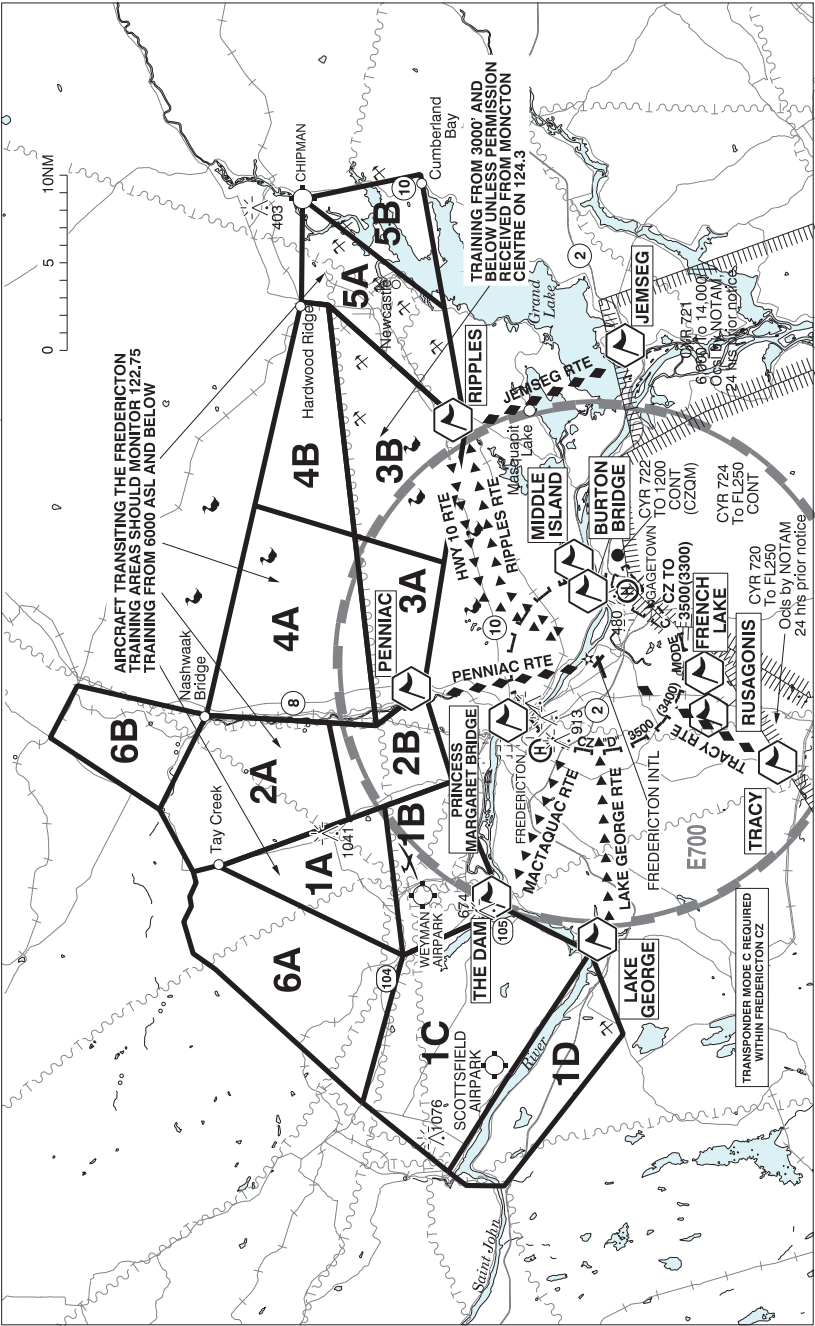
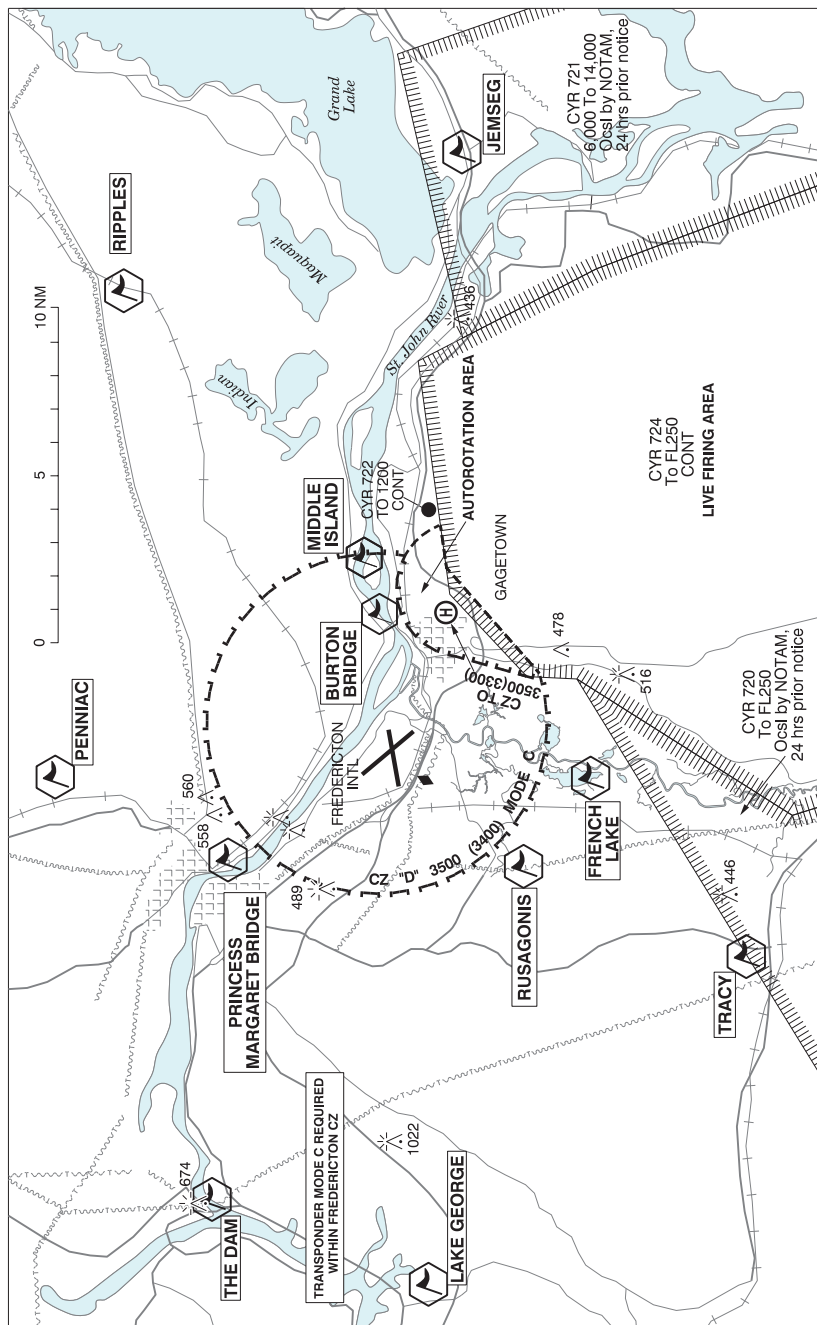


FREDERICTON VFR TERMINAL PROCEDURES CHART - TRAINING AREAS





FREDERICTON VFR TERMINAL PROCEDURES CHART (Cont'd)

NAME	IDENT	LAT/LONG
BURTON BRIDGE	VCBTB	N45° 51' 54" W066° 27' 05"
FRENCH LAKE	VCFRL	N45° 46' 00" W066° 33' 47"
JEMSEG	VCJMS	N45° 49' 44" W066° 07' 00"
LAKE GEORGE	VCLKG	N45° 51' 19" W066° 55' 34"
MIDDLE ISLAND	VCMDI	N45° 52' 45" W066° 24' 58"
PENNIAC	VCPNC	N46° 02' 00" W066° 35' 04"
PRINCESS MARGARET BRIDGE	VCRMB	N45° 56' 29" W066° 37' 33"
RIPPLES	VCRPL	N46° 00' 00" W066° 13' 00"
RUSAGONIS	VCRUS	N45° 48' 00" W066° 37' 28"
THE DAM	VCDAM	N45° 57' 23" W066° 52' 13"
TRACY	VCTRC	N45° 41' 03" W066° 41' 05"

VFR ROUTE PROCEDURES

DEPARTURES:

MACTAQUAC (NW): Outbound clear circuit, direct MACTAQUAC Dam enroute. Altitude: Climb to and maintain 2600 ft until clear of CZ.

RIPPLES (ENE): Outbound clear circuit, direct RIPPLES enroute, maintain North of the VOR at all times. Altitude: Climb to and maintain 2600 ft until clear of CZ and then maintain 3000 ft until training area or at/abeam Grand Lake.

PENNIAC DEPARTURE (N): Outbound clear circuit direct PENNIAC enroute. Altitude: Climb to and maintain 2600 ft until clear of CZ.

JEMSEG (SE): Outbound: Follow RIPPLES DEPARTURE, then turn right (south) to JEMSEG enroute. Altitude: Climb to and maintain 3000 ft until at/abeam JEMSEG.

TRACY (SW): Outbound clear circuit, direct TRACY enroute. Altitude: Climb to and maintain 2600 ft until clear of CZ.

Departing aircraft must join the route as soon as practicable after departure (i.e. once clear of the circuit unless instructed by ATC to turn after departure), follow the routes as described and maintain 2,600 feet until they have departed the Fredericton CZ.

ARRIVALS:

HWY10 (ENE): Inbound direct RIPPLES, follow Hwy 10 until North of airport, then direct CYFC. Maintain North of VOR at all times. Altitude: If inbound from East, descend to 2500 ft before Grand Lake, then descend to and maintain 1600 ft prior to entering CZ.

LAKE GEORGE (NW): Inbound direct Hwy 2 and Hwy 3 intersection, direct CYFC, maintain North of apch Rwy 09 at all times. Altitude: Descend to and maintain 1600 ft prior to entering CZ.

PENNIAC (N): Inbound direct PENNIAC, direct CYFC. Altitude: Descend to and maintain 1600 ft prior to entering CZ.

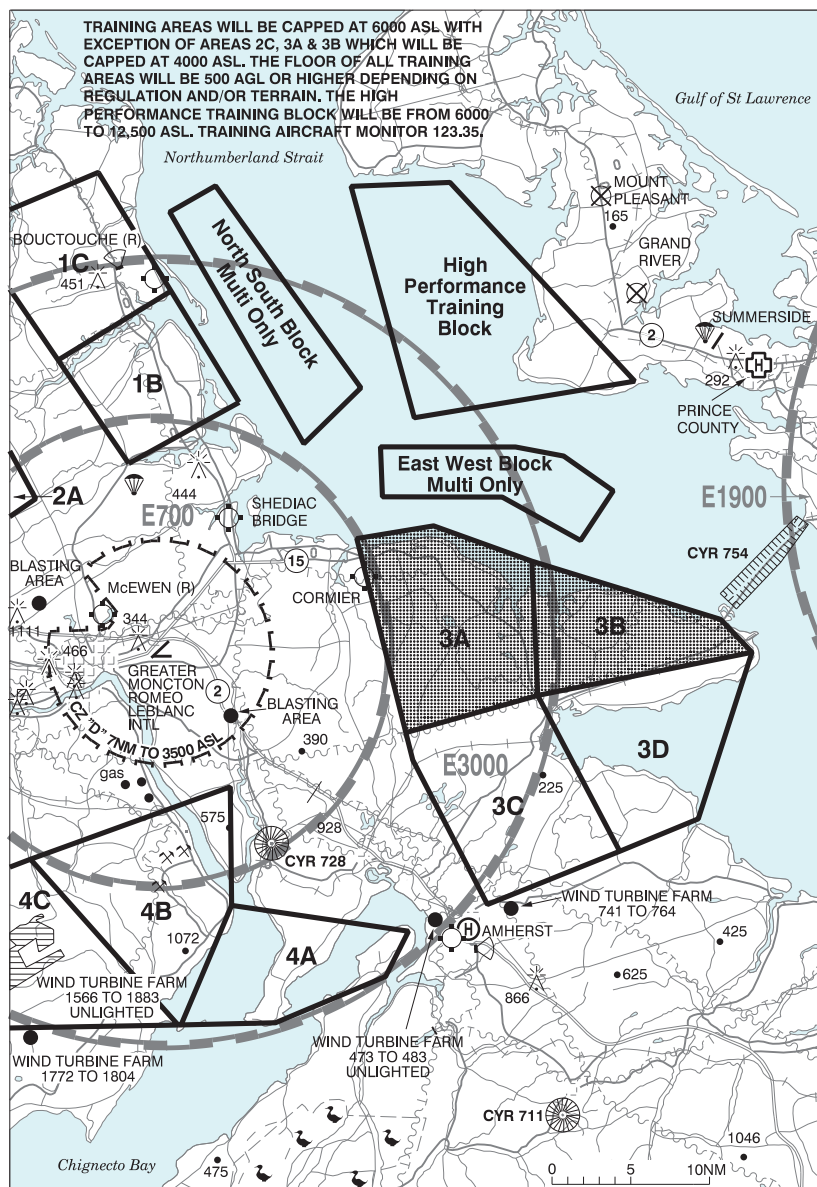
JEMSEG (SE): Inbound direct JEMSEG, direct RIPPLES, then follow HWY10 ARRIVAL. Altitude: Descend to 2500 ft at/abeam JEMSEG, then descend to and maintain 1600 ft prior to entering CZ.

TRACY: Inbound direct TRACY, direct CYFC. Altitude: Descend to and maintain 1600 ft prior to entering CZ.

Arriving aircraft must enter the Zone at 1,600', once inside CZ, descend at pilot's discretion, unless otherwise instructed, cleared or requested to maintain a specific altitude.

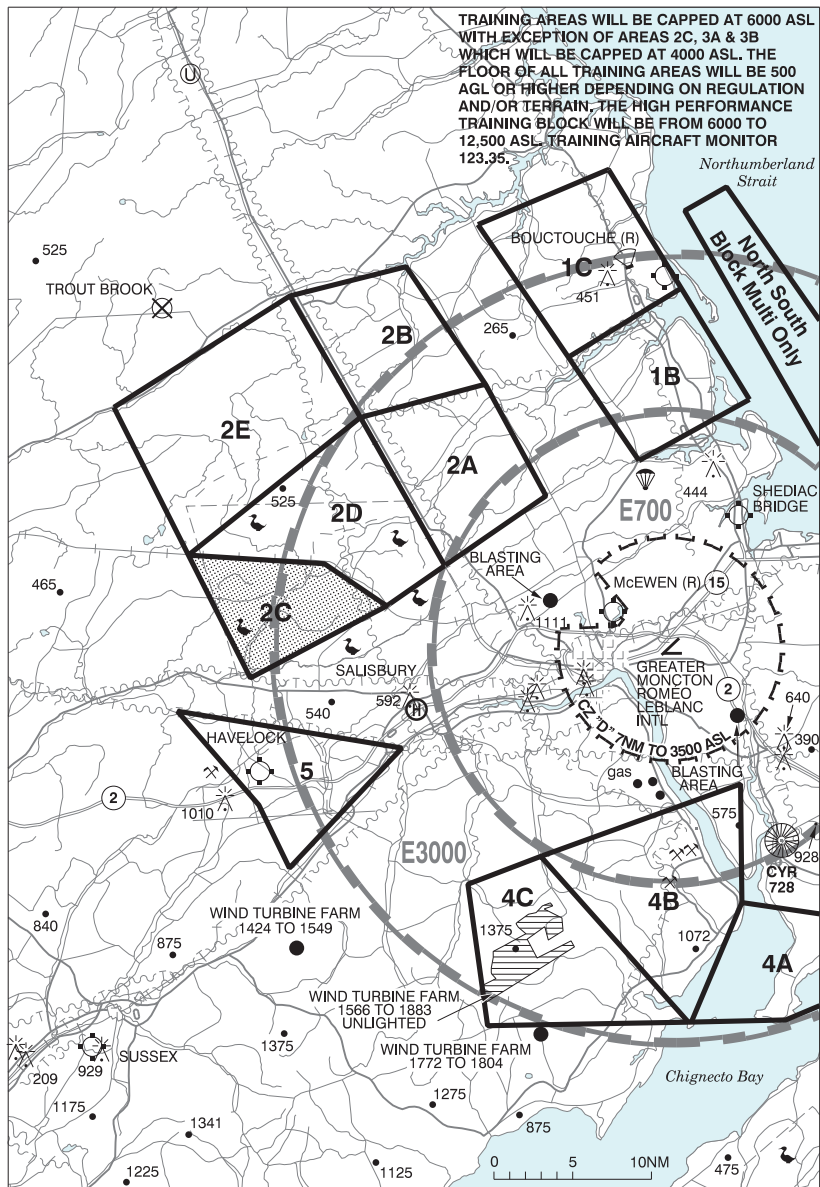
MONCTON VFR TERMINAL PROCEDURES CHART - TRAINING AREAS

MONCTON FLIGHT COLLEGE - EAST PORTION



MONCTON VFR TERMINAL PROCEDURES CHART - TRAINING AREAS

MONCTON FLIGHT COLLEGE - WEST PORTION



MONCTON VFR TERMINAL PROCEDURES CHART



NAME	IDENT	LAT/LONG
HILLSBOROUGH	VCHLH	N45° 55' 30" W064° 37' 19"
MAGNETIC HILL	VCHLL	N46° 08' 00" W064° 56' 45"
MEMRAMCOOK	VCMMC	N45° 55' 19" W064° 30' 56"
NOTRE DAME	VCCND	N46° 18' 55" W064° 43' 42"
ROBICHAUD	VCCHD	N46° 12' 30" W064° 22' 42"
SALISBURY	VCSBY	N46° 01' 41" W065° 02' 24"
SCOUDOUC	VCSDC	N46° 09' 42" W064° 33' 38"

MONCTON VFR TERMINAL PROCEDURES CHART (Cont'd)

VFR FLIGHT PROCEDURES

NOTRE DAME

Dep – Fly direct NOTRE DAME. Maintain 1500 feet until cleared higher or leaving the control zone.
Arr – From NOTRE DAME fly direct to clearance limit. Maintain 2500 feet until cleared lower or turning final.

ROBICHAUD

Dep – Fly direct to SCOUDOUC then direct to ROBICHAUD. Maintain 1500 feet until cleared higher or leaving the control zone.
Arr – Fly direct to SCOUDOUC and then to clearance limit. Maintain 2500 feet until cleared lower or turning final.

MEMRAMCOOK

Dep – Fly over the Trans Canada Hwy south to MEMRAMCOOK. Maintain 1500 feet until cleared higher or leaving the control zone.
Arr – From MEMRAMCOOK, fly over the Trans Canada Hwy north to clearance limit. Maintain 2500 feet until cleared lower or turning final.

HILLSBOROUGH

Dep – Fly over the Petitcodiac River south to HILLSBOROUGH. Maintain 1500 feet until cleared higher or leaving the control zone.
Arr – From HILLSBOROUGH, fly over the Petitcodiac River north to clearance limit. Maintain 2500 feet until cleared lower or turning final.

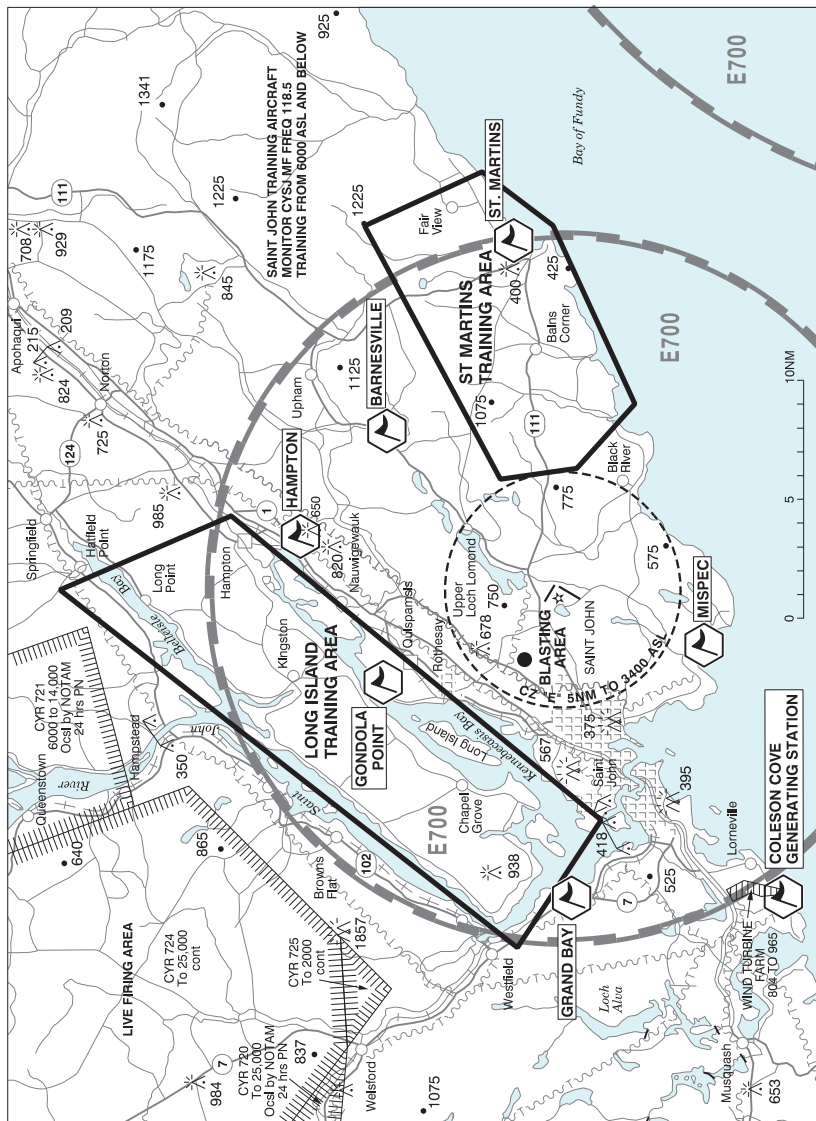
SALISBURY

Dep – Fly over the Petitcodiac River west to SALISBURY. Maintain 1500 feet until cleared higher or leaving the control zone.
Arr – From SALISBURY, fly over the Petitcodiac River east to clearance limit. Maintain 2500 feet until cleared lower or turning final.

MAGNETIC HILL

Dep – Fly over the Trans Canada Hwy west to MAGNETIC HILL. Maintain 1500 feet until cleared higher or leaving the control zone.
Arr – From MAGNETIC HILL, fly over the Trans Canada Hwy east to clearance limit. Maintain 2500 feet until cleared lower or turning final.

SAINT JOHN VFR TERMINAL PROCEDURES CHART - TRAINING AREAS



SAINT JOHN VFR TERMINAL PROCEDURES CHART - TRAINING AREAS (Cont'd)

NAME	IDENT	LAT/LONG
BARNESVILLE	VCBRN	N45° 26' 30" W065° 44' 00"
COLESON COVE GENERATING STATION	VCCGS	N45° 09' 18" W066° 12' 00"
GONDOLA POINT	VCGON	N45° 26' 12" W065° 59' 00"
GRAND BAY	VCBAY	N45° 18' 42" W066° 11' 36"
HAMPTON	VCHPN	N45° 29' 42" W065° 50' 06"
MISPEC	VCMIS	N45° 12' 48" W065° 56' 48"
ST. MARTINS	VCSTM	N45° 20' 54" W065° 32' 48"