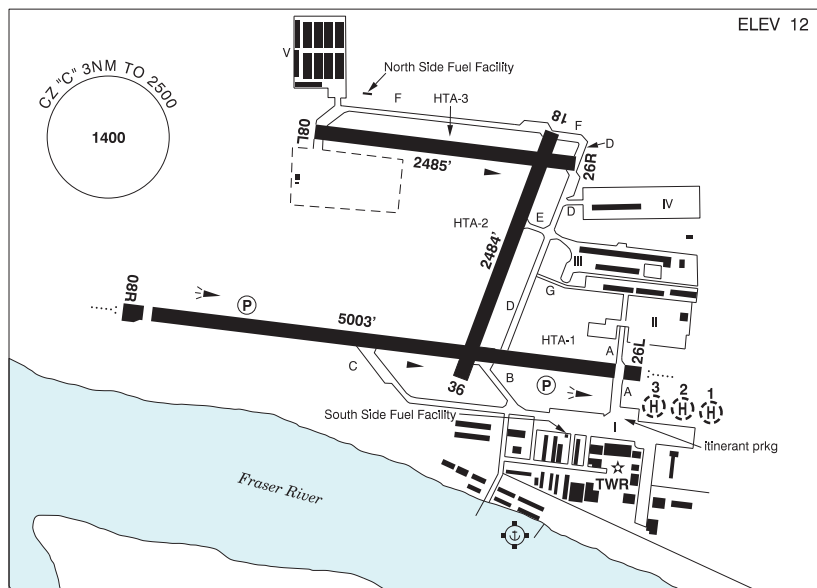


## BRITISH COLUMBIA

## AERODROME / FACILITY DIRECTORY

## PITT MEADOWS BC

CYPK



<b>REF</b>	N49 12 58 W122 42 48 1SW 17°E (2013) UTC-8(7) Elev 12' VTA A5004 LO2 T1 CAP
<b>OPR</b>	Pitt Meadows Aprt Society 604-465-8977 Cert
<b>PF</b>	A-1,2,3,7 C-4,5,6
<b>CUST</b>	AOE/CAN
<b>FLT PLN</b>	
<b>FIC</b>	Kamloops 866-WXBRIEF (Toll free within Canada) or 866-541-4101 (Toll free within Canada & USA)
<b>ACC</b>	Vancouver IFR 604-586-4590/4591; IFR tng flts PPR ctc 604-586-4592
<b>WX</b>	LWIS H24 LAWO 15-07Z‡
<b>SERVICES</b>	
<b>FUEL</b>	100LL (Cardlock) Helis not auth South Side Fuel Facility unless dollied, JA-1 (by truck)
<b>OIL</b>	All
<b>S</b>	1,2,3,4,5
<b>PVT ADV</b>	Integrity Flight Support (by truck) 778-808-3312 1530-0100Z‡ Mon-Fri exc hols, O/T call out chg; Aeroclub of BC (Cardlock) N & S Side Fuel Facilities 604-465-0446.
<b>RWY DATA</b>	Rwy 08R(080°)/26L(260°) 5003x100 ASPH Thld 08R displ 197' Thld 26L displ 164' Rwy 08L(080°)/26R(260°) 2485x75 ASPH Rwy 18(185°)/36(005°) 2484x75 ASPH RESA: 08R/26L 492'
<b>RWY CERT</b>	Rwy 08R/26L AGN IIIA Rwy 08L/26R AGN I Rwy 18/36 AGN I
<b>TWY CERT</b>	Twy: D, E, F, G AGN I
<b>APRON</b>	Apron I Itinerant prkg N of ATB, E of Twy A (see sketch). Apron III and V Pvt.
<b>RCR</b>	Twr 604-465-9723 PLR/PCN Rwy 08L/26R no win maint

## BRITISH COLUMBIA

## AERODROME / FACILITY DIRECTORY

## PITT MEADOWS BC (Cont'd)

CYPK

<b>HELI DATA</b>	Parking Pad 1 & 2: TLOF 68' dia ASPH Max heli overall length 57'. Day use tkof/lgd & prkg, night use prkg only. Parking Pad 3: TLOF 50' dia ASPH Max heli overall length 42'. Day use tkof/lgd & prkg, night use prkg only.
<b>LIGHTING</b>	08R-AO(TE ME) P2, 26L-AO(T ME) P2, 18-(TE ME), 36-(TE ME), 06-14Z± O/T ARCAL-126.3 key mic 3 times within 5 sec for 26L, & 5 times within 5 sec for 08R & 7 times within 5 sec for 18-36 for 15 min duration lgt.
<b>COMM</b>	<p><b>ATIS</b> 125.0 1-877-517-2847 15-07Z±</p> <p><b>GND</b> 123.8 15-07Z±</p> <p><b>TWR</b> Pitt 126.3 (V) 15-07Z± (emerg only 604-465-9723)</p> <p><b>MF</b> ttc 126.3 07-15Z± 3NM 2500 ASL (CAR 602.98)</p>
<b>NAV</b>	<p><b>VOR</b> YPK 112.4 N49 12 57 W122 42 54 (44')</p>
<b>PRO</b>	<p>Rgt hand circuits Rwy 08R, 18 &amp; 26R (CAR 602.96) circuit hgt 1000 ASL. Seaplane circuits 500 ASL on S side of Fraser River. Procedures for crossing the southern Strait of Georgia within Tml Class C airspace refer to Vancouver Intl, VTPC for Crossing the Southern Strait of Georgia.</p> <p><b>ATS REQUIREMENTS:</b></p> <p>All VFR acft arriving, departing or transiting the Vancouver or Victoria Tower Class C or D airspace require a transponder code.</p> <ul style="list-style-type: none"> <li>- All acft departing Vancouver or Victoria Intl (including Water Aerodrome) call Kamloops FIC at 866-541-4101 or PAC RDO 122.5 or 123.15 for code assignment at least 30 min prior to flight or file a VFR Flight Plan/Flight Itinerary.</li> <li>- All acft arriving Vancouver Intl (including Water Aerodrome) or transiting Vancouver or Victoria Control Zones obtain a code from one of the following ATS units: Vancouver Harbour, Nanaimo, Victoria Harbour, Boundary Bay, Langley, Abbotsford or Pitt Meadows, or call Kamloops FIC at 866-541-4101 or PAC RDO 122.5 or 123.15.</li> <li>- All acft arriving Victoria Intl from a non NAV CANADA site call Kamloops FIC at 866-541-4101 or PAC RDO 122.5 or 123.15 for code assignment at least 30 minutes prior to flight or file a VFR Flight Plan/Flight Itinerary.</li> </ul> <p><b>NIGHT RESTRICTIONS:</b></p> <ul style="list-style-type: none"> <li>- Circuit tng Rwy 08R &amp; 08L not auth 05-15Z± PPR.</li> <li>- Circuit tng Rwy 26L, 26R, 18/36 not auth 06-15Z± PPR.</li> <li>- Turbojet, turbofan and turboprop night circuit tng PPR.</li> <li>- All acft avoid overflight of noise-sensitive areas, unless unable due to crosswind limitations, operational/safety considerations, or as directed by ATC.</li> </ul> <p><u>When Tower Closed:</u></p> <ul style="list-style-type: none"> <li>- Rwy 08R/18/26L Dep: Acft climb rwy hdg to 1000 ASL BPOC. Best Rate of Climb. Avoid flt over built-up areas in downwind and crosswind legs.</li> <li>- Rwy 36 Dep: Left hand circuit. When safe turn left to 1000 ASL BPOC. Best Rate of Climb. Avoid flt over built-up areas in downwind and crosswind legs.</li> <li>- Rwy 08L/26R not to be used when twr is clsd unless rqrd due to operational/safety considerations.</li> </ul> <p><b>HELI:</b></p> <p>All Turbine Heli: Continuous circuits prohibited unless approved by APM. - Arr/dep: Avoid low flt over built-up areas, unless directed by ATC.</p>
<b>CAUTION</b>	Coyotes in vic of rwys. 160' lit crane 2NM NW of A/D. Quarry blasting ops within 0.6NM radius N49 17 14 W122 39 33 (aprx 4.7NM N of A/D) to 300 AGL. Industrial complex S of 26L apch, do not mistake bldg floodlights for rwy edge lights during low vis conds or ngt ops.