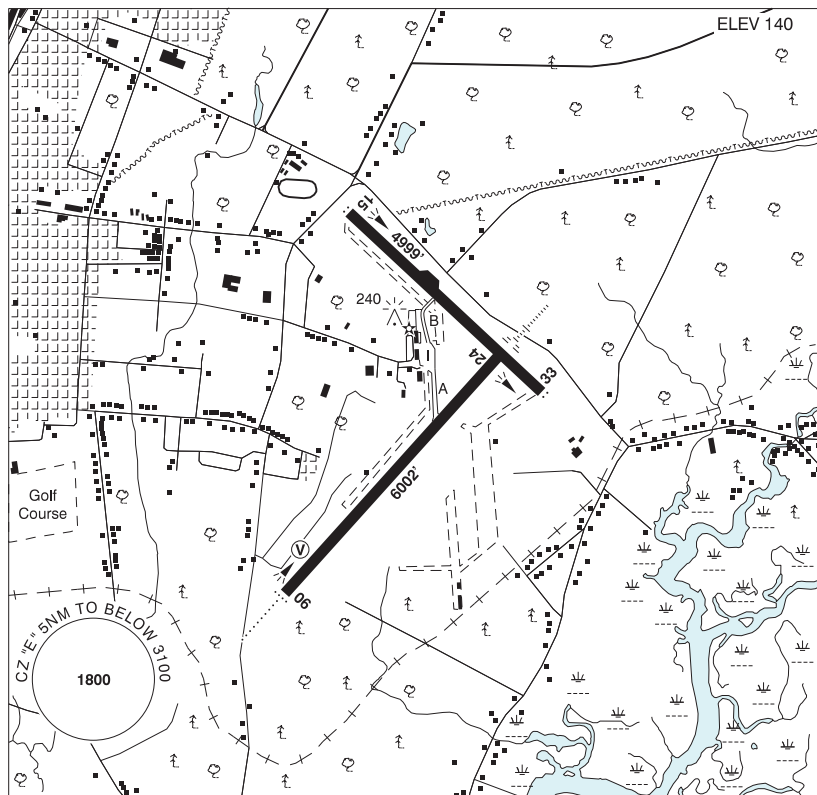


YARMOUTH NS

CYQI



REF	N43 49 38 W66 05 18 Adj E 17°W (2013) UTC-4(3) Elev 140' A5003 LO8 HI6 CAP
OPR	Yarmouth Airport Commission 902-742-6466 11-20Z† O/T PN 30 mins exc SAR & MEDEVAC Reg
PF	A-1 C-2,3,4,5,6
CUST	AOE/110 (225 with staged off-loading) 888-226-7277 12-21Z† May 1-Oct 31; 12-21Z† Mon-Fri including hols Nov 1-Apr 30
FLT PLN	<p>FIG London 866-WXBRIEF (Toll free within Canada) or 866-541-4104 (Toll free within Canada & USA)</p> <p>ACC (IFR only) Moncton 506-867-7177 or 866-480-8200.</p> <p>WX METAR H24 ALTIMETER/WIND 902-742-6466 H24 (see COMM) TAF H24 issue times: 00, 06, 12, 18Z</p>
SERVICES	Call out chg may be levied for one or more svcs.
FUEL	100LL, JA-1 (FSII avbl), HPR ltd hrs, ctc apt opr
OIL	65, 100
S	1,2
SUR FL	D-ice
MIL CON	Yarmouth Intl Airport Corp 902-746-4532

NOVA SCOTIA

AERODROME / FACILITY DIRECTORY

YARMOUTH NS (Cont'd)

CYQI

RWY DATA	Rwy 06(059°)/24(239°) 6002x150 ASPH Rwy 06 down 0.42% AGN IIIA Rwy 15(150°)/33(330°) 4999x150 ASPH Rwy 15 down 0.35% AGN IIIA
TWY	B: Acft over 50,000 lbs not auth.
RCR	Opr CRFI & win maint avbl ltd hrs, PLR/PCN
LIGHTING	06-AD(non-std 2000') (TE HI) V2, 24-AE(TE HI), 15-AS(TE ME), 33-AS(TE ME)
COMM	
RCO	London Rdo 123.55 (FISE)
MF	UNICOM (AU) 123.0 5NM 3100 ASL (CAR 602.98)
PAL	Moncton Ctr 123.9 368.5
NAV	
DME	YQI 113.3 Ch 80 N43 49 30 W66 04 57 (159')
CAUTION	Daily radiosonde balloon launches with an ascent rate of 1000 ft/min btwn hrs of 1115-1345Z and 2315-0145Z. Deer in vic of aprt.