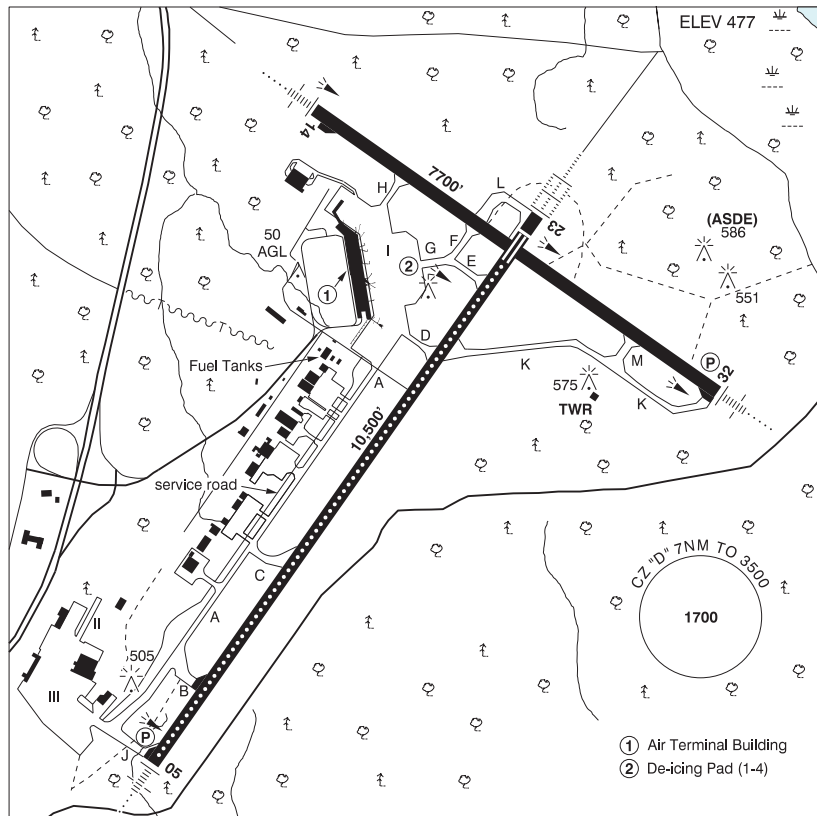


## HALIFAX / STANFIELD INTL NS

CYHZ



<b>REF</b>	N44 52 47 W63 30 37 14NNE 18°W (2012) UTC-4(3) Elev 477' A5003 LO8 HI6 T2 CAP OC
<b>OPR</b>	Halifax International Airport Authority 902-873-2578 Cert
<b>PF</b>	A-1,2,3,5,6,7
<b>CUST</b>	AOE 888-226-7277
<b>FLT PLN</b>	
<b>FIC</b>	London 866-WXBRIEF (Toll free within Canada) or 866-541-4104 (Toll free within Canada & USA)
<b>ACC</b>	(IFR only) Moncton 506-867-7177 or 866-480-8200.
<b>WX</b>	METAR H24. TAF H24, issue times: 00, 03, 06, 09, 12, 15, 18, 21Z WxCam

## NOVA SCOTIA

## AERODROME / FACILITY DIRECTORY

## HALIFAX / STANFIELD INTL NS (Cont'd)

CYHZ

<b>SERVICES</b>	
<b>FUEL</b>	100LL, JA-1 (FSII avbl)
<b>OIL</b>	All
<b>S</b>	1,2,3
<b>ARFF</b>	DESIGNATED CAT 8
<b>SUP FL</b>	ADI, D & A-ice
<b>JASU</b>	Elect Start Stewart-Stevenson 2650 Air Start
<b>PVT ADV</b>	Shell Aerocentre 123.4; PAL Aviation Services 129.3; Gateway Fac ULC 129.1 902-873-1900
<b>MIL CON</b>	Innotech Aviation Services (Shell) 902-873-3737
<b>RWY DATA</b>	Rwy 05(053°)/23(233°) 10500x200 ASPH/CONC Thld 23 displ 361' Rwy 14(143°)/32(323°) 7700x200 ASPH Rwy 32 down 0.54% RESA: All Rwy 492'
<b>RWY CERT</b>	Rwy 05 RVR 1200(1/4sm)/Rwy 23 RVR 600 AGN V Rwy 14 RVR 1200(1/4sm)/Rwy 32 RVR 1200(1/4sm) AGN V
<b>RCR</b>	Opr CRFI, PLR/PCN
<b>LIGHTING</b>	05-AN(TE HI CL)P3, 14-AN(TE HI), 23-AL(TE HI CL TDZL), 32-AN(TE HI)P3
<b>COMM</b>	
<b>RCO</b>	London rdo 123.275 (FISE) 126.7 (bcst) (E) (emerg only 519-452-4049)
<b>ATIS</b>	121.0
<b>CLNC DEL</b>	123.95
<b>GND</b>	121.9 275.8
<b>TWR</b>	118.4 236.6 (E) (emerg only 902-873-1364)
<b>TML</b>	119.2 118.7 128.55 363.8
<b>PAL</b>	Moncton Ctr 135.3
<b>NAV</b>	
<b>VOR/DME</b>	YHZ 115.1 Ch 98 N44 55 23 W63 24 07 (604')
<b>DME</b>	IHZ 109.1 Ch 28 N44 53 35 W63 30 48 (449')
<b>ILS</b>	IJG 109.9 (Rwy 23) RVR LOC reliable only within 10° either side of centreline; IHZ 109.1 (Rwy 14) RVR LOC reliable only within 10° either side of centreline.
<b>LOC</b>	IGX 109.9 (Rwy 05) LOC reliable only within 10° either side of centreline.
<b>PRO</b>	In vis RVR 2600 (1/2 SM) or greater, Rwy 23 dep will be fr Twy E (9100 FT) unless otherwise requested. Pilots should refer to Canadian Airport Charts (CAC) to obtain details on established hot spots, prior to operating on maneuvering areas. CAC are available for free on the NAV CANADA website. <b>DE-ICING OPERATIONS</b> 1. Ctc de-icing provider 30 min prior to dep if de-icing is rqrd. Notify de-icing provider of any special treatments prior to pushback: ICE MAN 122.950 or 902-410-7748. 2. De-icing provider will assign de-ice pad and advise when ready. 3. DO NOT PUSH prior to assigned de-ice pad being ready. 4. To mitigate congestion on the APN, QUEUING for de-icing is NOT ACCEPTABLE. 5. Monitor Halifax GND 121.9 for all APN movement. 6. Follow instructions to designated de-ice pad. 7. Advise ICEMAN immediately once brakes set, acft configured and engines at idle. 8. After de-icing, configure acft for taxi, however, DO NOT MOVE ACFT. 9. Once instructed, ctc Halifax GND 121.9 for taxi.
<b>CAUTION</b>	Extensive bird activity in vic of rwys Oct-Mar.