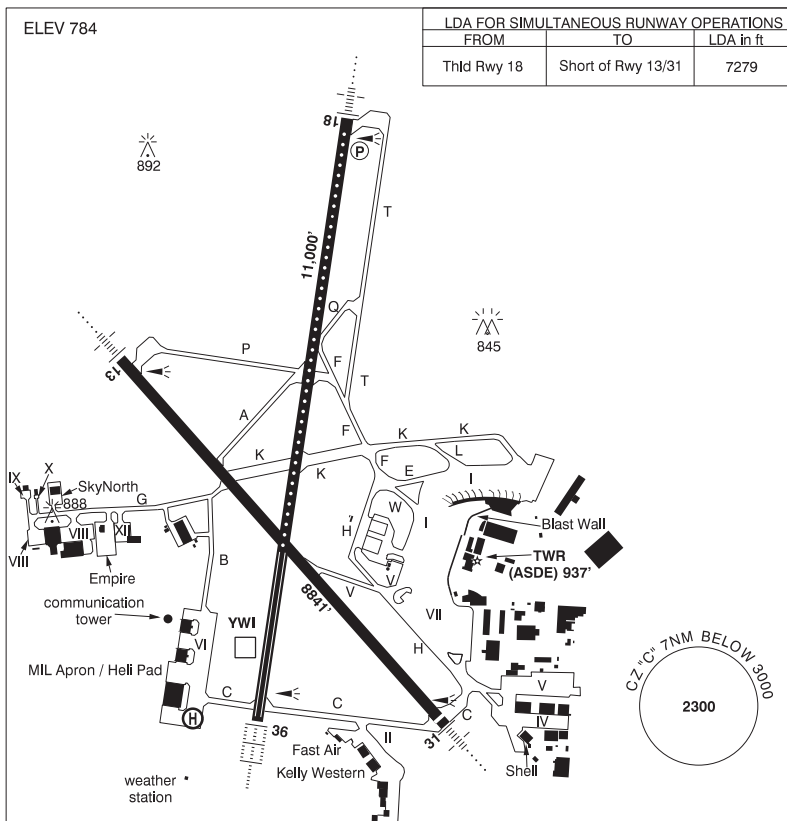


WINNIPEG / JAMES ARMSTRONG RICHARDSON INTL MB

CYWG



<b>REF</b>	N49 54 36 W97 14 24 Adj W 3°E (2014) UTC-6(5) Elev 784' VTA A5007 LO4 HI4 T1 CAP OC
<b>OPR</b>	Winnipeg Airports Authority 204-987-9798, DND Ops 877-283-6827 H24 Cert Ldg fees
<b>PF</b>	A-1,2,3,6,7,8 B-4 C-5 Mil on Base Transport avbl 1330-2130Z ‡ Mon-Fri, 6 days advance notice required.
<b>CUST</b>	AOE 888-226-7277
<b>FLT PLN</b>	Pilots to open/close VFR fit plan with Edmonton rdo, FISE or by phone. <b>FIG</b> Edmonton 866-WXBRIEF (Toll free within Canada) or 866-541-4102 (Toll free within Canada & USA) (file 30 min prior ETD, see PRO) <b>ACC</b> IFR, 204-983-8337 or 888-834-3344 or flt pln by Fax at 204-983-2823 & include phone numbers where pilot can be reached prior to dep. <b>WX</b> METAR H24. TAF H24, issue times: 00, 06, 12, 18Z. Met brief for mil only. JMC 1-800-WXMETEO (996-3836) or CSN 432-2613. (See COMM) <b>DUAT</b> Fast Air; Kelly Western; Shell Aviation Winnipeg

## MANITOBA

## AERODROME / FACILITY DIRECTORY

## WINNIPEG / JAMES ARMSTRONG RICHARDSON INTL MB (Cont'd)

CYWG

<b>SERVICES</b>	
<b>FUEL</b>	100LL, F-34, JA-1 FSII (avbl), HPR
<b>OIL</b>	All (Mil 123, 128, 133, 148, 156)
<b>S</b>	1,2,3,4,5,6
<b>ARFF</b>	DESIGNATED CAT 7 (CAT 8 avbl with prior arrangement, ctc WAA 204-987-9798 O/T call out chg may apply) Discrete emerg freq 122.675
<b>SUP FL</b>	LHOX, D & A-ice H24 Oct 1-May 31, O/R 2 hr PN Jun 1-Aug 31, O/R Sep 1-30. Mil LOX, Nitrogen avbl PN via NOVA msg only.
<b>JASU</b>	CE12, 13, 14, 16, CA2, CEA1
<b>MIL ADV</b>	All tran acft require PPR thru 17 Wg Ops CSN 319-257-2700 204-833-2700 Toll Free 877-283-6827. PPR valid for ± 1 hr ETA. Tran svcg avbl 14-02Z± Mon-Fri, wknds & hols 14-21Z±. 24 hr PN wkds, 48 hr PN for wknds or hol. Non-compliance could result in delays for Mil svcg & prkg or svcg being referred to civ contractor. Mil acft emerg hg space only. 17 Wg ops will arrange D & A-ice with CDF contractor when req by aircrew. All applicable costs will be the responsibility of the aircrew home unit. Mil svcg rstd to park, start & refuelling with Aircrew Supervision exc for CC130 acft. No tow bar for CP140, CT155 & CT156 acft. Ctc Wg Ops (131.4 or 308.8) 20 min prior to ETA & before entering or exiting Mil ramp.
<b>PVT ADV</b>	Fast Air 123.0 204-831-7714; Kelly Western 122.85 204-948-9500; Shell Aviation Winnipeg 123.35 204-956-6172
<b>MIL CON</b>	Exchange Petroleum (Shell) 204-956-6172
<b>RWY DATA</b>	
	Rwy 18(185°)/36(005°) 11000x200 ASPH Rwy 13(135°)/31(315°) 8841x200 ASPH Thld 31 displ 140' RESA: 13 738'; 31 492'; 18/36 1000'
<b>RWY CERT</b>	Rwy 18 RVR 1200(1/4sm)/Rwy 36 RVR 600 AGN VI Rwy 13 RVR 1200(1/4sm)/Rwy 31 RVR 1200(1/4sm) AGN VI
<b>TWY CERT</b>	Twy A AGN IV Twy: B, G AGN V
<b>TWY</b>	Twy A: not avbl to acft 160,000 lbs or heavier, exc B757 & B767. Twy E, W: simultaneous use by acft with wingspan 171' or greater not auth. Twy G: Uncontrolled, ctc gnd prior to taxi fr Apron. Discretionary oversteer rqrd for acft with wingspan 171' to less than 214'.
<b>APRON</b>	Apron I: Ctc aprt for stand assignment. Acft shall be pushed back straight fr all bridge locations on Apron I unless otherwise auth. Acft taxiing or being towed to or fr Apron I ctc gnd ctl prior to manoeuvring. Apron II: not avbl to acft with wingspan 118' or greater. Apron IV: not avbl to acft with wingspan 171' or greater. Pvt. Apron V: Ctc aprt for stand assignment. Ctc gnd ctl prior to taxi or tow. Not avbl to acft with wingspan 171' or greater. Apron VI: Pvt Apron VII: Ctc aprt for stand assignment. Ctc gnd ctl prior to taxi or tow. Apron VIII: acft with wingspan 171' to less than 214' discretionary oversteer rqrd. Pvt. Apron IX, X, XII: Pvt Apron Empire, SkyNorth: Pvt
<b>RCR</b>	Opr CRFI, PCN
<b>LIGHTING</b>	
	13-AN(TE HI), 31-AN(TE HI), 18-AN(TE HI CL) P2, 36-AL(TE HI TDZL)
<b>COMM</b>	
<b>RCO</b>	Edmonton rdo 123.25 (FISE) 126.7 (bcst)
<b>ATIS</b>	120.2
<b>CLNC DEL</b>	121.3 all dep acft to ctc clnc del
<b>GND</b>	121.9
<b>TWR</b>	118.3 125.4 (V) (emerg only 204-983-6705)
<b>ARR</b>	119.5
<b>DEP</b>	121.0 (West) 119.9 (East)
<b>VFR ADV</b>	121.0 (West) 119.9 (East)
<b>MIL</b>	Base Ops 131.4 308.8

## NAV

**DME** YWI 116.7 Ch 114 N49 53 54 W97 14 35 (801')  
**ILS** INP 109.5 (Rwy 13) RVR  
 IWG 109.9 (Rwy 36) RVR  
 IHV 110.3 (Rwy 31) RVR

## PRO

**AIRPORT:** Rgt hand circuits Rwy 13 & 18 (CAR 602.96). Circuit hgt all rwys 2000 ASL.

**Arrival Requirements**

1. On apch, cross the FAF at 170 kt or less.
2. On visual apch, intercept final at or outside the final apch FAF for landing rwy unless otherwise authorized by ATC.

**Note:** Refer to NOISE ABATEMENT PROCEDURES for additional requirements.

**Training Flight / Photo Block Requirements**

PPR for all block air work, photo flight or training flight operating in Winnipeg TCA. Ctc Winnipeg ACC 204-984-5979 Fax 204-983-2823.

**Note:** Refer to NOISE ABATEMENT PROCEDURES for additional requirements.

**ATS VFR REQUIREMENTS:**

1. **Mode C Transponder Mandatory** - Acft operating in Winnipeg Class C CZ or TCA require a discrete transponder code which must be obtained by filing a fit plan, fit itinerary or by ctc Winnipeg ACC 204-984-5979 at least 15 min prior to entering. Acft departing CYAV may ctc CYAV Tower to obtain a discrete transponder code. Set transponder to discrete code prior to ctc ATC.
2. **VFR Circuits:** PPR, Ctc Winnipeg ACC 204-984-5979

**DE-ICING OPERATIONS**

De-icing bays 1, 3, 4, 6 not avbl to acft with wingspan 118' or greater.

De-icing bay 2 avbl to acft with wingspan 214' or greater with discretionary oversteer at entrance.

De-icing bay 5 not avbl to acft with wingspan 214' or greater.

See CAP Central De-icing Facility chart.

For more information, ctc Icehouse 204-987-9436.

1. Prior to push back, notify PAD CONTROL (122.925) and WINNIPEG GND when de-icing is required.
2. Hold short of Central De-icing Facility (CDF) and ctc PAD CONTROL on 122.925.  
**Note:** In the event that the "Hold" light and/or inset lgt can not be utilized, the CDF will deploy a "Follow Me" vehicle.
3. All deicing operations are performed with acft engines running, unless otherwise advised by PAD CONTROL.

**CAUTION: all oprg engines must be maintained at gnd idle thrust settings.**

**De-icing operation limited to maximum wind gusts of 40kts.**

## MANITOBA

## AERODROME / FACILITY DIRECTORY

WINNIPEG / JAMES ARMSTRONG RICHARDSON INTL MB (Cont'd) CYWG

<b>PRO (Cont'd)</b>	4. Once de-icing is complete, acft will be instructed to ctc WINNIPEG GND for taxi cnc. <b>DO NOT ENTER TWY H WITHOUT ATC CLEARANCE. MINIMUM BREAKAWAY THRUST MUST BE USED.</b>
<b>NOISE</b>	Maint engine run-ups & lcl flt tng PPR, ctc 204-987-9798. Noise oprg restrictions & noise abatement procedures in effect, see current CAP.
<b>HELI</b>	Use extreme caution at apron II due to lgt acft & 10' high security fence S of apron. Air taxi along aprons IV & V proh. Caution: 7' high security fence 50' S of Mil ramp 6.
<b>MIL</b>	IFR or VFR tran mil jet acft will conduct a straight-in apch commencing at or outside the final apch fix for the rwy in use, overhead breaks not auth. All VFR Flt Plns within Winnipeg TCA shall include an alt. MIL De-icing All Mil aircrew to arrange de-icing through Wg Ops Ctr.
<b>CAUTION</b>	Radiosonde balloon launches with an ascent rate of 1000 ft/min btwn the hrs of 1715Z-1730Z fr U of M (N49 48 09 W97 08 34, 7.5NM SE aprt, aprx 1.2NM SW fr extended rwy centreline 13/31). Ocsl para jumps by 435 Sqn 15-21Z† Mon-Fri. Max alt 3000 ASL. Drop zone 1.5NM radius N49 52 42 W97 29 48 (10NM WSW A/D) at Beaudry Provincial Park. Hi ints lgt oprg dusk-09Z† from hotel roof at N49 49 19 W97 09 10 (aprx 5.3NM SE thld Rwy 31). Beams projecting upward. Hi ints lgt may create tempo effects to vision.