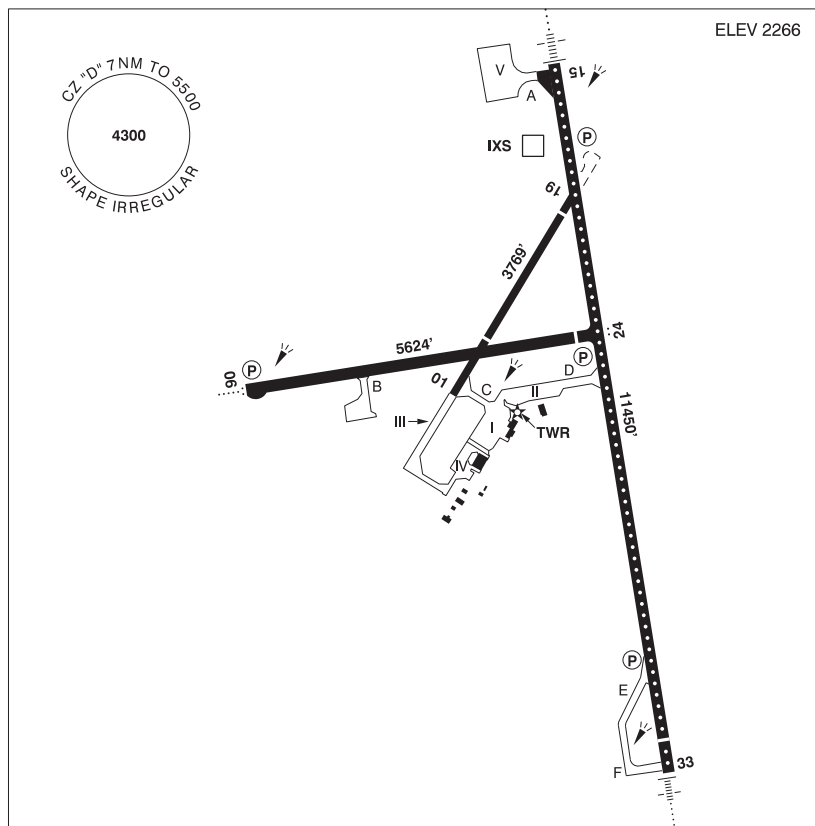


## PRINCE GEORGE BC

CYXS



<b>REF</b>	N53 53 03 W122 40 39 2.8SE 18°E (2014) UTC-8(7) Elev 2266' A5014 LO1 HI3 CAP
<b>OPR</b>	Prince George Airport Authority 250-963-2400 Cert
<b>PF</b>	A-1,2,3,6 C-4,5
<b>CUST</b>	AOE/30 (120 with staged off-loading) 888-226-7277 1630-0030Z†
<b>FLT PLN</b>	
<b>  FIC</b>	Kamloops 866-WXBRIEF (Toll free within Canada) or 866-541-4101 (Toll free within Canada & USA)
<b>  WX</b>	METAR AUTO H24 (see COMM). TAF H24, issue times: 01, 07, 13, 19Z. WxCam
<b>SERVICES</b>	
<b>  FUEL</b>	100LL, JA-1 (FSII avbl), F-34, JB, HPR
<b>  OIL</b>	All
<b>  S</b>	1,2,3,4
<b>  ARFF</b>	DESIGNATED CAT 7 1400-0730Z† sked pax flt only, O/T call out chg, 2 hr PN, aprt clsd to acct 20 seats & abv, exc for diversions or as an altn A/D without PPR.
<b>  PVT ADV</b>	Jetmark 129.4 250-961-8124
<b>  MIL CON</b>	PetroValue Products Canada Inc. 604-576-0004

## BRITISH COLUMBIA

## AERODROME / FACILITY DIRECTORY

## PRINCE GEORGE BC (Cont'd)

CYXS

<b>RWY DATA</b>	Rwy 15(153°)/33(333°) 11450x150 ASPH Thld 33 displ 500' Rwy 15 down 0.3% Rwy 06(063°)/24(243°) 5624x150 ASPH Thld 24 displ 401' Rwy 24 up 0.87% Rwy 01(013°)/19(193°) 3769x75 ASPH Thld 01 displ 984'. Thld 19 displ 373'
<b>RWY CERT</b>	Rwy 15 RVR 1200(1/4sm)/Rwy 33 RVR 1200(1/4sm) AGN V Rwy 06/24 AGN IIIB Rwy 01/19 AGN III
<b>TWY CERT</b>	Twy: B AGN IIIB Twy: C, D AGN IV
<b>RCR</b>	Opr 1300-0730Z†. Rwy 01/19 rstd to 12,500 lbs for ldg & tkof day only. Win maint 1300-0730Z† O/T 2hr PN cost recovery. CRFI, PLR/PCN.
<b>LIGHTING</b>	06-AO(TE ME) P2, 24-AS(TE ME) P2, 15-AN(TE HI CL) P3, 33-AN(TE HI CL) P2 PAPI limitation/restriction. PAPI Rwy 24 to be used only within 5NM of thld ARCAL-118.3 type K when twr clsd Rwys 01/19 lit as twy
<b>COMM</b>	
<b>RCO</b>	Williams Lake rdo 118.3 (RAAS) 07-14Z† Pacific rdo 123.55 (FISE) 126.7 (bcst)
<b>ATIS</b>	128.725 14-07Z†
<b>GND</b>	121.9 14-07Z†
<b>TWR</b>	118.3 (V) 14 -07Z† (emerg only 250-963-9177)
<b>MF</b>	Williams Lake rdo 118.3 07-14Z† CZ shape irregular 7NM 5500 ASL (CAR 602.98) (emerg only 250-989-4415)
<b>PAL</b>	Vancouver Ctr 133.8
<b>AWOS</b>	128.725 07-14Z†
<b>NAV</b>	
<b>VOR/DME</b>	YXS 112.3 Ch 70 N53 53 39 W122 27 20 (4076')
<b>DME</b>	IXS 109.5 Ch 32 N53 53 46 W122 40 19 (2260')
<b>ILS</b>	IXS 109.5 (Rwy 15) RVR LOC reliable only within 10° either side of centreline.
<b>PRO</b>	Rgt hand circuits Rwys 19, 24 & 33 (CAR 602.96).
<b>CAUTION</b>	Tall vehicles crossing 910' N thld Rwy 15. Extv bird activity dur spring & fall. Parajumping activity vic Beaverley A/D 8NM SW to 12,500 ASL by NOTAM, monitor 122.1. Radiosonde balloon launches with an ascent rate of 1000 ft/min daily between the hours of 1115-1345Z & 2315-0145Z. Hi terrain reduces operational length of Rwy 24 PAPI.