

CANADA FLIGHT SUPPLEMENT / GPH 205

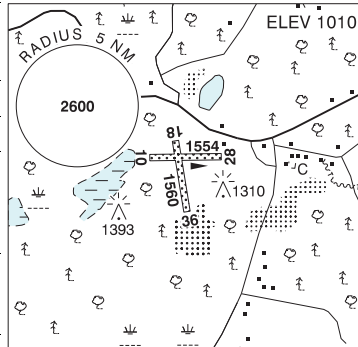
Effective 0901Z 17 June 2021 to 0901Z 12 August 2021

AERODROME/FACILITY DIRECTORY B1139

ULLSWATER ON

CLW2

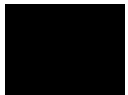
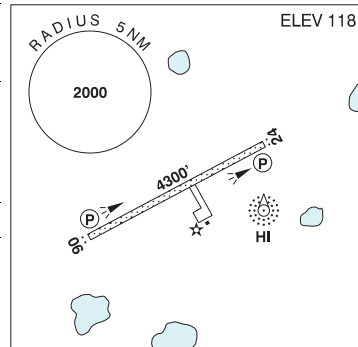
REF	N45 12 39 W79 30 16 Adj WSW 11°W (2016) UTC-5(4) Elev 1010' A5000
OPR	Ron Brent 705-644-7040 Reg PPR
PF	C-2
FLT PLN	
FIC	London 866-WXBRIEF (Toll free within Canada) or 866-541-4104 (Toll free within Canada & USA)
RWY DATA	Rwy 18(182°)/36(002°) 1560x80 TURF Rwy 10(100°)/28(280°) 1554x80 TURF
RCR	Opr No win maint. Rwy soft in spring.
COMM	
ATF	tfc 122.8 2NM 3900 ASL
CAUTION	Active sand pit and quarry S of A/D. Lgt'd twr 1310 ASL (260 AGL) 0.2NM ESE of A/D. Lgt'd twr 1393 ASL (345 AGL) 0.3NM SW of A/D.



ULUKHAKTOK / HOLMAN NT

CYHI

REF	N70 45 46 W117 48 22 2N 18°E (2018) UTC-7(6) Elev 118' A5041 LO5 CAP
OPR	Govt of Northwest Territories (Inuvik) 867-777-2467 Emerg/Incident rpt ctc Govt of Northwest Territories 877-989-1400 Cert Ltd hrs
PF	A-1 C-2,3,4,5
FLT PLN	
FIC	Edmonton 866-WXBRIEF (Toll free within Canada) or 866-541-4102 (Toll free within Canada & USA)
ACC	Edmonton IFR 888-358-7526
CARS	867-396-3141 Ltd hrs (see COMM).
WX	METAR dur CARS hrs (see COMM) O/T LWIS TAF 1700-0100Z Mon-Sat, 1700-2000Z Sun, issue times: 17, 19Z (DT 16, 19Z) Mon-Sat, 1700Z± Sun. Exc federal observed hols.
SERVICES	Call out chg may be levied for svcs
FUEL	JA Holman Eskimo Co-op 867-396-3531, 587-357-0105
RWY DATA	Rwy 06(062°T)/24(242°T) 4300x99 GRVL Rwy 24 up 0.63% first 953' then down 0.36%
RWY CERT	Rwy 06/24 AGN IIIB
RCR	Hamlet 867-396-8000 win maint 15-24± Mon-Fri exc hols, O/T 1 hr PN 867-396-3082/4655. Call out chg may be levied. PLR/PCN
LIGHTING	06-AS(TE ME) P1, 24-AS(TE ME) P1 ARCAL-122.1 type K. AS lgt avbl on hi ints only.
COMM	
RCO	Edmonton rdo 123.475 (FISE) 126.7 (bcst)
MF	aprt rdo ltd hrs O/T tfc 122.1 5NM 3100 ASL (CAR 602.98)
APRT RDO	122.1 (V) 15-01Z± Mon-Sat, 15-20Z± Sun, exc federal observed hols



CANADA FLIGHT SUPPLEMENT / GPH 205

Effective 0901Z 17 June 2021 to 0901Z 12 August 2021

B1140 AERODROME/FACILITY DIRECTORY

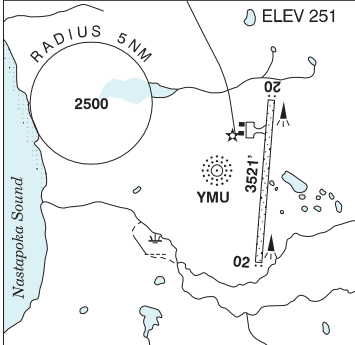
ULUKHAKTOK / HOLMAN NT (Cont'd)

CYHI

NAV	NDB HI 361 (M) N70 45 44 W117 47 24 Unmonitored when CARS clsd
PRO	Pilots ctc CARS prior to dep IFR enroute to ensure Holman NDB is oprg normally.

UMIUJAQ QC

CYMU

REF	N56 32 10 W76 31 06 19°W (2013) UTC-5(4) Elev 251' A5026 LO5 CAP	
OPR	Administration Régionale Kativik 819-964-2968 14-22Z† Mon-Fri O/T 819-964-3434 Ext 154 Fax 819-964-2462 Cert	
PF	A-1 C-2,4,5	
FLT PLN	FIC Québec 866-GOMÉTÉO or 866-WXBRIEF (Toll free within Canada) or 866-541-4105 (Toll free within Canada & USA) ACC Montréal 800-633-1353 CARS 819-331-1530 ltd hrs (see COMM) WX METAR dur CARS hrs (see COMM) O/T LWIS	
RWY DATA	Rwy 02(025°)/20(205°) 3521x100 GRVL Rwy 02 down 0.5% first 590', up 0.5% next 1080'. Rwy 20 down 1.0% first 690', up 0.4% next 1150'. RWY CERT Rwy 02/20 AGN IIIA RCR Opr PLR/PCN	
LIGHTING	02-AS(TE ME), 20-AS(TE ME) ARCAL-122.1 type J, RIL lctd 20' outside of rwy edge.	
COMM	MF aprt rdo (English only) ltd hrs O/T tfc 122.1 15NM 3300 ASL (CAR 602.98) APRT RDO 122.1 (V) 1230-2230Z†	
NAV	NDB YMU 230 (L) N56 32 14 W76 31 23 Unmonitored when CARS clsd	
PRO	Rgt hand circuits Rwy 20 (CAR 602.96).	
CAUTION	Wildlife: Possibility of caribou on rwy Nov-May. Night ops: Only pilots familiar with local area should use this A/D dur hrs of darkness due to sur terrain & optical illusions. Turbulence: Severe turbulence may be encountered when wind exceeds 20 kt.	