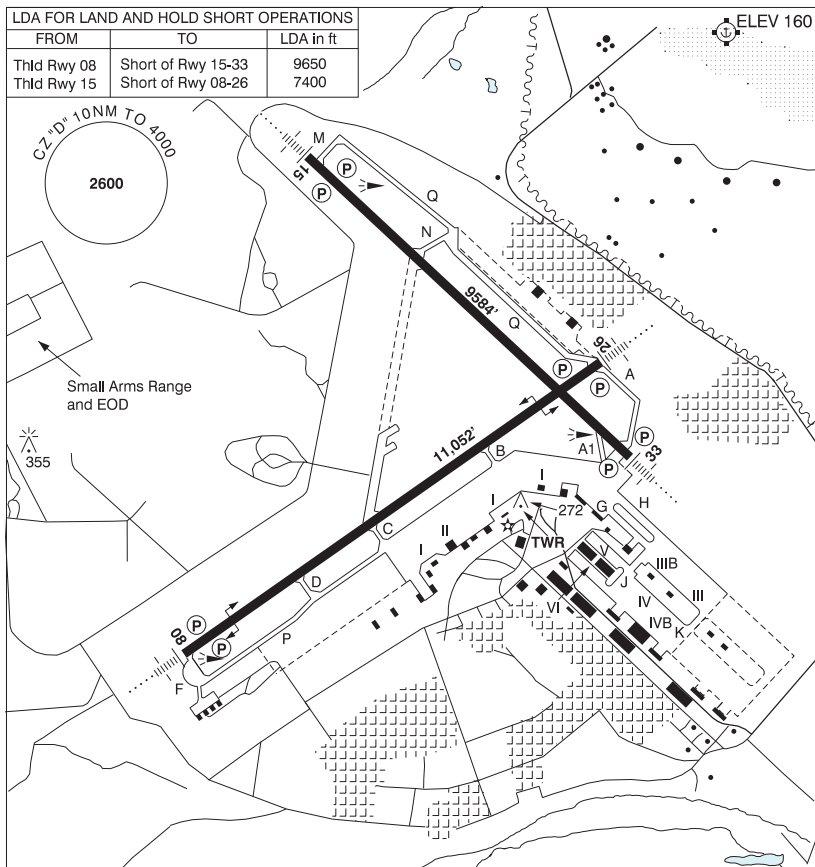


GOOSE BAY NL

CYYR



<b>REF</b>	N53 19 09 W60 25 33 4.5NNW 20°W (2022) UTC-4(3) Elev 160' A5020 LO7 HI1 CAP
<b>OPR</b>	5 Wing Ops Centre 709-896-6900 ext 555-7331 CSN 319-555-7331, 800-563-2390, e-mail <a href="mailto:5wgwoc@forces.gc.ca">5wgwoc@forces.gc.ca</a> , for civ ctc Goose Bay Airport Corp 709-896-5445, e-mail <a href="mailto:operations@goosebayairport.com">operations@goosebayairport.com</a> 12-21Z† Mon-Fri O/T 709-896-5755 Fax 709-896-2434 Ldg fees thru PVT ADV PPR for all military and state aircraft with stop overs in CYYR. Contact 5 Wing Ops Centre via <a href="mailto:5wgwoc@forces.gc.ca">5wgwoc@forces.gc.ca</a> or FBO handler for assignment of PPR number.
<b>PF</b>	A-1,6 C-2,3,4,5
<b>CUST</b>	AOE/M 1130-0330Z†; AOE/15 888-226-7277 H24
<b>FLT PLN</b>	<p><b>FIC</b> London 866-WXBRIEF (Toll free within Canada) or 866-541-4104 (Toll free within Canada &amp; USA)</p> <p><b>ACC</b> (IFR only) Gander 709-651-5225 or 888-751-5225.</p> <p><b>MIL</b> Flt ops 709-896-6900 ext 555-7331 CSN 319-555-7331, 800-563-2390, e-mail <a href="mailto:5wgwoc@forces.gc.ca">5wgwoc@forces.gc.ca</a></p> <p><b>WX</b> METAR H24. TAF H24, issue times: 00, 06, 12 &amp; 18Z. O/T JMC 1-800-WXMETEO 996-3836 or CSN 432-2613. (See COMM)</p>

## NEWFOUNDLAND AND LABRADOR

## AERODROME / FACILITY DIRECTORY

## GOOSE BAY NL (Cont'd)

CY9R

<b>SERVICES</b>	All acft carrying dangerous goods, Class 1, division 1.1, 1.2, 1.3, 1.4 explosives 24 hr PPR thru 709-896-6900 ext 555-7331 CSN 319-555-7331. Hg space avbl. Civ acft co-ordination thru FBO at PVT ADV. Mil acft co-ordination thru MIL ADV.
<b>FUEL</b>	100LL, JA-1 (FSII avbl), F-34, SP, HPR
<b>OIL</b>	All (128, 133, 156)
<b>S</b>	1,2
<b>ARFF</b>	DESIGNATED CAT 8
<b>SUP FL</b>	LOX, LHOX, D & A-ice (24 hrs PN thru opr).
<b>JASU</b>	CE13, 14, CA1
<b>MIL ADV</b>	Flt Ops 129.85 350.5 709-896-6900 ext 555-7331 CSN 319-555-7331. 800-563-2390, e-mail <a href="mailto:5wgwoc@forces.gc.ca">5wgwoc@forces.gc.ca</a> .
<b>PVT ADV</b>	Tran svcg thru Woodward Avn unicom 122.9 800-563-5202, 709-896-5036. Irving Avn 123.3 709-896-9090 Page 1-553-1092; Woodward Avn 122.9 709-896-5036, 800-563-5202 or 709-899-4660
<b>MIL CON</b>	Woodward Oil (Woodward's Avn 709-896-5036)
<b>RWY DATA</b>	Rwy 08(075°)/26(255°) 11052X200 concrete with asphalt overlay Rwy 15(153°)/33(333°) 9584x200 concrete with asphalt overlay RAG: Rwy 08 BAK-12B(1300'); Rwy 26 BAK-12B(1350'); Nov 1-Mar 31 acft requiring cable 24 hr PN. Apr 1-Oct 31 1 hr PN thru opr.
<b>TWY</b>	Twys G, J, K and H south of J uncontrolled. Twys A1 & K unlit. Uncontrolled vehicle rte on Twy G.
<b>RCR</b>	Opr CRFI No win maint on Twy A1. PCN Rwy 08/26 PCN 86/F/B/W/T Rwy 15/33 PCN 59/R/B/W/T.
<b>LIGHTING</b>	08-AN(non-std 3000' (1600' SF))(TE HI) P2, 26-AN(TE HI) P2, 15-AN(TE HI) P2, 33-AN(TE HI) P2
<b>COMM</b>	
<b>RCO</b>	London rdo 123.475 (FISE) 126.7(bcst)
<b>ATIS</b>	128.1 340.8
<b>CLNC DEL</b>	118.1 336.5
<b>GND</b>	121.9 275.8
<b>TWR</b>	119.1 236.6 (E)
<b>TML</b>	119.5 267.1 257T (E) 11-03Z± Mon-Sat O/T Gander Ctr
<b>PAL</b>	Gander Ctr 120.4 294.5
<b>PMSV</b>	344.6
<b>NAV</b>	
<b>NDB</b>	GOOSE YR 257 (M) N53 20 16 W60 21 57
<b>VOR/DME</b>	GOOSE YYR 117.3 Ch 120 N53 19 11 W60 17 41 (92')
<b>TACAN</b>	GOOSE UYR 110.3 Ch 40 N53 19 11 W60 25 00 (200') Preventive maint 12-16Z± Tue exc dur IFR. Unrel btwn 096°-036° beyond 30NM below 3500'; 356°-036° beyond 35NM below 4100'; 106°-136° beyond 35NM below 4100'; 136°-356° beyond 35NM below 5000'.
<b>ILS</b>	IYR 110.3 (Rwy 08) (LOC back course Rwy 26 avail mil use only) RVR. Maint 12-16Z± Thu exc dur IFR.

## NEWFOUNDLAND AND LABRADOR

## AERODROME / FACILITY DIRECTORY

## GOOSE BAY NL (Cont'd)

CYFR

<b>PRO</b>	<p>Rgt hand circuits Rwy 26 (CAR 602.96). Tfc ptns: jets 1500 ASL, convl 1000 ASL. Mil jet tfc VFR recovery points; N – Hill (051° R/10NM); E – East of Lake (124° R/13NM); W – Falls (276° R/14NM); S – Lake (241° R/13NM). Acft should land beyond apch end arrestor cable when in up posn. Noise abatement Rwy 08 climb rwy hdg to 2000 ASL before turning. Noise abatement pro for sensitive area in vicinity of Northwest River/Sheshatshui N53 31.5 W60 09 (aprx YYR 046° R/14NM) &amp; Mud Lake N53 18 W60 10 (aprx YYR 116° R/4.5 NM). All mil acft avoid flt below 2000 ASL within 2NM radius. Helo reporting pts - Helo will report over pts at 500 AGL:  Helo 1 - CN Wharf; Helo 2 - Newfoundland Tel Twr; Helo 3 - Pumping Station; Helo 4 - Alexander Lake; Helo 5 - Abm Little Muskrat Lake. Unmarked fur farm loc N53 18.0 W60 22.0: Acft requested to avoid overflight of this farm below 1000 ASL within 0.5NM. All acft arriving or departing Goose (Otter Creek) ctc TWR prior to ldg or tkof.</p>
<b>CAUTION</b>	<p>Snow bank on apron btwn twy B &amp; C Nov-May. Daily radiosonde balloon launches with an ascent rate of 1000 ft/min between the hrs of 1115-1345Z and 2315-0145Z Water Aerodrome, Goose (Otter Creek), 2.5 NM N. Small Arms Range lctd 1.5 NM NW of AD. Times of activation via ATIS, NOTAM or Goose Bay twr. Ammo compound located 0.3 NM SE of thld Rwy 08, no overflight below 1700 ASL.</p>