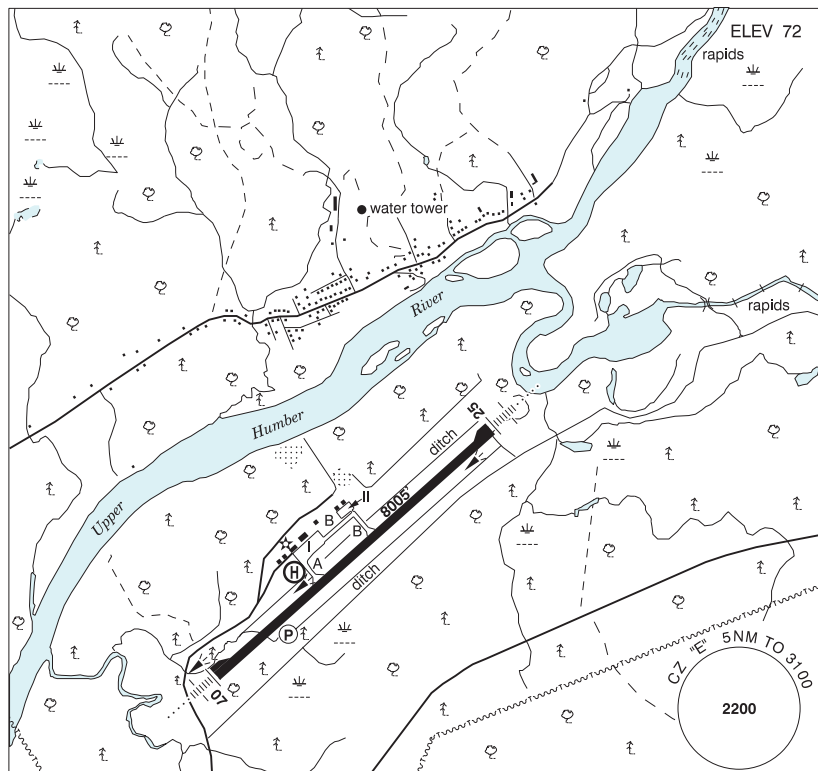


## NEWFOUNDLAND AND LABRADOR

## AERODROME / FACILITY DIRECTORY

## DEER LAKE NL

CYDF



<b>REF</b>	N49 12 33 W57 23 40 3NNE 20°W (2013) UTC-3/12(21/2) Elev 72' A5011 A5012 LO8 HI6 CAP
<b>OPR</b>	Deer Lake Regional Airport Authority Inc. 709-635-3601 0830-0430Z± Cert
<b>PF</b>	A-1,2,3,6 C-4,5
<b>CUST</b>	AOE/120 (250 with staged off-loading) 888-226-7277 1830-0230Z± Mon-Fri, Feb 1-May 30; 1130-1930Z± Mon-Fri, Jun 22-Sep 30; AOE/15 H24
<b>FLT PLN</b>	<p><b>FIG</b> London 866-WXBRIEF (Toll free within Canada) or 866-541-4104 (Toll free within Canada &amp; USA)</p> <p><b>ACC</b> (IFR only) Gander 709-651-5225 or 888-751-5225.</p> <p><b>WX</b> METAR H24. TAF H24, issue times: 02, 08, 14, 20Z.</p>
<b>SERVICES</b>	<p><b>FUEL</b> 100LL, JA-1</p> <p><b>OIL</b> All</p> <p><b>ARFF</b> DESIGNATED CAT 6 (CAT 7 30 min PN) 0830-0430Z±, O/T call out chg.</p> <p><b>PVT ADV</b> Nalair 122.85 709-635-3574 Fax 709-635-3901 Woodward Aviation 709-635-3776</p> <p><b>MIL CON</b> Woodward's Oil Limited 709-635-3776</p>

## NEWFOUNDLAND AND LABRADOR

## AERODROME / FACILITY DIRECTORY

## DEER LAKE NL (Cont'd)

CYDF

<b>RWY DATA</b>	Rwy 07(066°)/25(246°) 8005x150 ASPH Rwy 07 up 0.35%
<b>RWY CERT</b>	Rwy 07 RVR 1200(1/4sm)/Rwy 25 RVR 1200(1/4sm) AGN IV
<b>HELI DATA</b>	Two 50' dia pads.
<b>RCR</b>	Opr CRFI 0830-0430Z† PN for extended svc PLR/PCN
<b>LIGHTING</b>	07-AN (TE HI) P2, 25-AN (TE HI)
<b>COMM</b>	
<b>RADIO</b>	122.2 239.6 PTC avbl (E) (emerg only 709-635-2848)
<b>RCO</b>	London rdo 123.375 (FISE) 126.7 (bcst)
<b>MF</b>	rdo 122.2 5NM 3100 ASL (CAR 602.98)
<b>PAL</b>	Gander Ctr 134.6
<b>NAV</b>	
<b>VOR/DME</b>	YDF 113.3 Ch 80 N49 13 57 W57 12 48 (450')
<b>DME</b>	IDF 108.3 Ch 20 N49 12 55 W57 23 14 (96')
<b>ILS</b>	IDF 108.3 (Rwy 25) LOC reliable only within 10° either side of centreline.
<b>CAUTION</b>	Water tower 1NM N of thld Rwy 25, 225 ASL.