

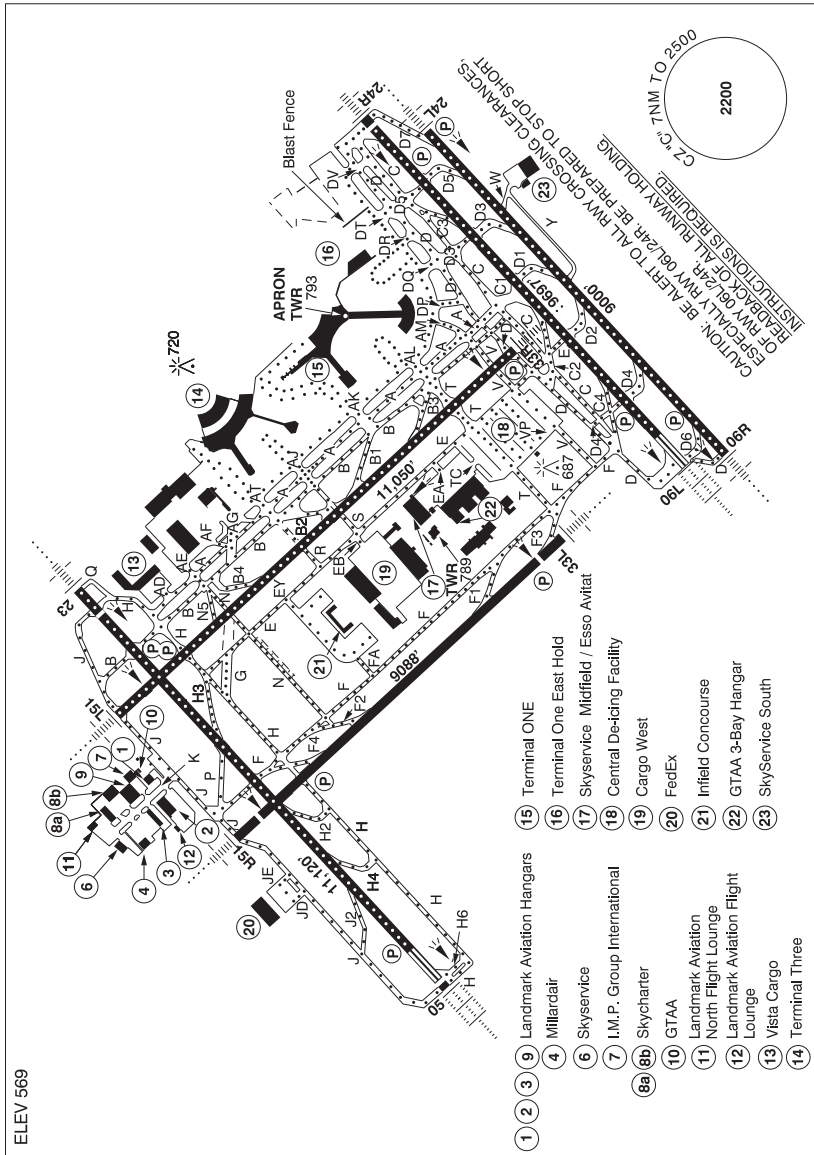
CANADA FLIGHT SUPPLEMENT / GPH 205

Effective 0901Z 2 December 2021 to 0901Z 27 January 2022

B1116 AERODROME/FACILITY DIRECTORY

TORONTO / LESTER B. PEARSON INTL ON

CYYZ



REF	N43 40 34 W79 37 50 Adj W 10°W UTC-5(4) Elev 569' VTA A5000 LO6 HI5 T2 CAP OC
OPR	Greater Toronto Airports Authority 416-776-3056 H24 Cert Ldg fees
PF	A-1,2,3,5,6,7 C-4

CANADA FLIGHT SUPPLEMENT / GPH 205

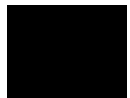
Effective 0901Z 2 December 2021 to 0901Z 27 January 2022

AERODROME/FACILITY DIRECTORY B1117

TORONTO / LESTER B. PEARSON INTL ON (Cont'd)

CYYZ

CUST	AOE 888-226-7277 General aviation aircraft must clear customs at the fixed base opr of their choice. Ramp charges may apply.
FLT PLN	Pilots to open/close VFR Flt Pln with London FIC via phone or London rdo 123.275 when practicable.
FIC	London 866-WXBRIEF (Toll free within Canada) or 866-541-4104 (Toll free within Canada & USA)
WX	METAR H24.
ACC	TAF H24, issue times: 00, 03, 06, 09, 12, 15, 18 & 21Z.
DUAT	Toronto 905-676-4590/4591/4592 or 888-217-1241. Flt pln by Fax at 905-676-5044 & include phone numbers where pilot can be reached prior to dep.
SERVICES	Esso Avitat; Landmark Aviation; Skycharter
FUEL	JA, JA-1 (FSII avbl), JB, HPR
OIL	All
S	1,2,3
ARFF	DESIGNATED CAT 9
SUP FL	D & A-ice, LHOX
JASU	CE16
PVT ADV	Landmark Aviation 122.95 H24; Skycharter Ltd 129.75 1130-08Z† Skyservice/Esso Avitat 128.95 H24
MIL CON	World Fuel Services 905-362-5932



CANADA FLIGHT SUPPLEMENT / GPH 205

Effective 0901Z 2 December 2021 to 0901Z 27 January 2022

B1118 AERODROME/FACILITY DIRECTORY

TORONTO / LESTER B. PEARSON INTL ON (Cont'd)

CYYZ

RWY DATA	<p>Rwy 15L(147°)/33R(327°) 11,050x200 ASPH Rwy 15R(147°)/33L(327°) 9088x200 ASPH Thlds 15R & 33L displ 588 Rwy 05(057°)/23(237°) 11,120x200 ASPH Thld 05 displ 135' Thld 23 displ 686' Rwy 06L(057°)/24R(237°) 9697x200 ASPH Thld 24R displ 197' Rwy 06R(057°)/24L(237°) 9000x200 ASPH RESA: All Rwys 492' Departures from holding bay inner centerlines Rwy 06L, 24R and 05/H6 subtract 263' from declared distances.</p>
RWY CERT	<p>Rwy 15L RVR 1200(1/4sm)/Rwy 33R RVR 600 AGN V Rwy 15R RVR 1200(1/4sm)/Rwy 33L RVR 1200(1/4sm) AGN V Rwy 05 RVR 600/Rwy 23 RVR 1200(1/4sm) AGN V Rwy 06L RVR 600/Rwy 24R RVR 1200(1/4sm) AGN V Rwy 06R RVR 1200(1/4sm)/Rwy 24L RVR 1200(1/4sm) AGN V</p>
TWY CERT	<p>Twy K AGN IV Twy: W, Y AGN IIIB</p>
TWY	<p>Twy K is <u>uncontrolled</u> & is rstd to acft with wingspans 41.15m/135'(B757W) or less & an Aircraft Load Rating of 9.0 or less. Other acft may be auth with prior appr from opr. Design spd for C2, B2, H3, D6, D4, D2, D1, D3, D5 & D7 is 50 kt (93 kph). Design spd for J2, F1, F2, F3 & F4 is 45 kt (85 kph). All other rapid exits designed for an exit speed of 35 kt (65kph). Normal Rwy 23 depts are from Twy "H". Rwy 23 depts do not enter Twy "Q" without specific clearance from ATC. Acft requiring full length must notify gnd ctl on initial contact. During CAT II/III arrivals 05 departures shall be from H6 Twys W & Y rstd to acft with wingspans of 35.9m/118' or less.</p>
APRON	<p>At all T1, T1 East Hold, T3, Infield & FedEx Apron/Parking areas, all acft must contact the applicable Apron Advisory prior to engine start at gate, pushback or taxi. FedEx Apron rstd to acft with wingspans 51.9m/170' or less. Taxilane between 3C and 4C rstd to acft with wingspans 35.9m/118' or less. Wingspans of 64.9m/213' permitted to Gate C27 Code E. Asphalt apron sfc E of positions 5G and 6F to 101A rstd to acft with wingspans 28.4m/93' (DH8-400) or less & an acft load rating of 9.0 or less. Outer/East loop btwn 7E-8E rstd to acft with wingspans 35.9m/118' or less and Inner/East loop btwn 7D-8D rstd to acft with wingspans 79.9m/262' or less. Simultaneous use of lane 7 & 8 max wingspan 64.9m/213' Code E. Outer/North loop btwn 9C-9D-10D-10C restricted to wingspans 35.9m/118' or less. Strict adherence to Taxilane centerline required between DR and DV and on Taxilanes 10 through 13E. Taxilane 10 rstd to aircraft with wingspans 50.9m/167' or less. Refer to CAP parking areas (Terminal 1 and Terminal 1 East Hold) for details. Proceed only to gates assigned by Apron Advisory.</p>
RCR	<p>Opr CRFI, PLR/PCN</p>
LIGHTING	<p>05-AL(TE HI A TDZL) P3, 23-AN(TE HI A) P3 06L-AL(TE HI A TDZL) P3, 24R-AW AS(TE HI A) P3 06R-AN(TE HI A) P3, 24L-AN(TE HI A) P3 15R-AN(TE HI) P3, 33L-AN(TE HI) P3 15L-AN(TE HI A) P3, 33R-AN(TE HI A) P3</p>
COMM	<p>RCO London rdo 123.275 (FISE) ATIS 120.825 133.1 CLNC DEL 121.3 all dep acft ctc clnc del dur 12-04Z± APRON ADV North apron 122.275 (122.825) South apron 122.075 (122.825) A-CDM Coordinator 122.875 (122.825) Apron Tow Coordinator 136.525 FedEx, Infield Concourse, Cargo West 122.275 (North apron), Skyservice/Avitat, 3 Bay Hgr Aprons 122.075 (South apron). GND 119.1 121.65 121.9 TWR Toronto 118.35 118.7 (E) (emerg only 905-676-3588) ARR 124.475 125.4 132.8 DEP 127.575 128.8 VFR ADV 119.3 133.4</p>

CANADA FLIGHT SUPPLEMENT / GPH 205

Effective 0901Z 2 December 2021 to 0901Z 27 January 2022

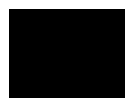
AERODROME/FACILITY DIRECTORY B1119

TORONTO / LESTER B. PEARSON INTL ON (Cont'd)

CYYZ

NAV

NDB	QUEENSWAY ZYZ 368 (M) N43 37 10 W79 32 52 WOODHILL ZTO 403 (L) N43 44 20 W79 42 12
VOR/DME	YYZ 112.15 Ch 58(Y) N43 39 29 W79 37 53 (561') PEARSON YTP 116.55 Ch 112(Y) N43 40 18 W79 39 50 (595')
DME	IDP 111.95 Ch 56(Y) N43 39 41 W79 37 12 (552') IJS 109.1 Ch 28 N43 39 44 W79 37 10 (551') INV 109.3 Ch 30 N43 40 33 W79 35 58 (565') ITO 110.95 Ch 46(Y) N43 40 13 W79 38 03 (572')
ILS	ICV 111.95 (Rwy 06R) RVR LOC reliable only within 10° either side of centreline; IDP 111.95 (Rwy 24L) RVR LOC reliable only within 10° either side of centreline; IJS 109.1 (Rwy 06L) RVR LOC reliable only within 10° either side of centreline; ILP 110.95 (Rwy 15R) RVR LOC reliable only within 10° either side of centreline; INV 109.3 (Rwy 24R) RVR LOC reliable only within 10° either side of centreline; ITO 110.95 (Rwy 33L) RVR LOC reliable only within 10° either side of centreline; ITX 109.7 (Rwy 05) RVR LOC reliable only within 10° either side of centreline; ILE 110.3 (Rwy 33R) RVR LOC reliable only within 10° either side of centreline; IRW 110.5 (Rwy 15L) RVR LOC reliable only within 10° either side of centreline; IYZ 111.5 (Rwy 23) RVR LOC reliable only within 10° either side of centreline



CANADA FLIGHT SUPPLEMENT / GPH 205

Effective 0901Z 2 December 2021 to 0901Z 27 January 2022

B1120 AERODROME/FACILITY DIRECTORY

TORONTO / LESTER B. PEARSON INTL ON (Cont'd)

CYYZ

RESTRICTIONS

OPERATING RESTRICTIONS

The following restrictions are in effect:

1. All acft oprg on a scheduled and repetitive basis to/fr the A/D are rqr'd to obtain a slot for all ops.
2. Training flights are not permitted in the Toronto Control Zone from 0000-0700 local time. For other times, prior permission is required from National Traffic Management Unit (FLOW CTL) 800-268-4831 or 905-676-3528.
3. All maintenance runs/runups must be conducted in accordance with GTAA APRON & MAINTENANCE RUN PROCEDURES (avbl from opr-tel 416-776-3056). Upon approval contact Apron Coordinator frequency.
4. Airport Reservation Office (ARO) procedure for all General Aviation and Business Aviation acft oprg IFR & VFR flights. Operators must file a dep and arr reservation thru the Online Coordination System (OCS). Ctc ARO at 416-776-7568 or 1-800-267-7568 H24. More info avbl on www.torontopearson.com/aro

NOISE ABATEMENT RESTRICTIONS

Pursuant to CAR 602.105 and CAR 602.106, the following restrictions are in effect:

1. Noise abatement pro apply to all acft, (VFR & IFR) wx permitting 04-12Z†.
2. Arrivals and departures of acft are rstd as per the table below:

Aircraft	Restricted Hours - local time
Noise Certification or Type	Arrivals & Departures
I All non-noise certificated jet aircraft	2000 - 0800
II All ICAO annex 16, vol 1 chapter 2 & equivalent aircraft	0000 - 0700
III All ICAO annex 16, vol 1 chapter 3 & equivalent aircraft (subject to paragraph 4 or 5)	0030 - 0630
IV All other aircraft (subject to paragraph 4 or 5)	0030 - 0630

- a) Non-noise certificated jet powered acft are prohibited from departing on Runways 05, 06L, 06R, 15L, 15R and 33L.
 - b) Between 0000 and 0630 local time, departures are prohibited on Rwy 05, 06L, 06R, 15L and 15R and arrivals are prohibited on Rwy 24R, 24L, 23, 33R, 33L and 15R unless assigned by ATC.
 - c) All acft operating on a scheduled and repetitive basis are rqr'd to obtain an extension or an exemption to opr dur the rstd hrs. Submit req for oprg ext on the day of ops to the GTAA with justification at 416-776-3480 or 1-800-267-SLOT (7568), (fax 416-776-5552). For advance exemption requests or information, make submission in writing to the Manager, Slots & Capacity Allocation, Greater Toronto Airports Authority, Toronto Pearson International Airport, P.O. Box 6031, Toronto AMF, Ontario, L5P 1B2 (fax 416-776-3483).
 - d) **All other ops are rqr'd to obtain permission to opr dur the rstd hrs** by contacting the GTAA on the day of operation at 416-776-3480 or 1-800-267-SLOT (7568), (fax 416-776-5552).
3. VFR acft 04-12Z†: climb rwy hdg to 3600 ASL. When wx does not permit climbing to 3600 ASL, climb rwy hdg to max alt allowed by rules for VFR flt in controlled airspace.

CANADA FLIGHT SUPPLEMENT / GPH 205

Effective 0901Z 2 December 2021 to 0901Z 27 January 2022

AERODROME/FACILITY DIRECTORY B1121

TORONTO / LESTER B. PEARSON INTL ON (Cont'd)

CYYZ

PRO

Pilots should refer to Canadian Airport Charts (CAC) to obtain details on established hot spots, prior to operating on maneuvering areas. CAC are available for free on the NAV CANADA website.

IFR CLEARANCE ACKNOWLEDGEMENT

Acknowledgment of IFR clncs with Toronto twr clnc del shall include the acft call sign, transponder code & name of SID pro that was assigned in the IFR clnc.

When informed by ATIS or by the arr controller that simultaneous ILS apchs are in progress, pilots shall advise the arr controller immediately of any avionics unsvc or if unable to comply. In VFR wx acft may be vectored to intercept the lczr at a point above the GP.

Clnc to opr within the Toronto class C airspace will only be given to acft equipped with functioning transponder & mode C unless prior approval obtained from ATC 905-676-4509 (IFR acft) or 3589 (VFR acft).

Multilateration: Pilots must keep their transponder on at all times when maneuvering on the aprt, turned on prior to brake release and on arrival, on until final engine shutdown. Pilots that do not have a transponder code issued by ATC must squawk 1000 when taxiing.

MINIMUM RUNWAY OCCUPANCY TIME

Due to min apch spacing, arriving acft should exit rwy as soon as possible. For departing acft, ATC will employ conditional line-up clncs as follows: "Taxi to position after the departing (acft type)." Pilots should ensure that they are able to commence tkof roll immediately after tkof clnc is issued.

CROSSWIND CONDITIONS

Anticipate landing 05/23 & 06L/24R in crosswinds up to 30 kt at 90°.

DURING SNOW CLEARING OPERATIONS

Acft should be prepared to dep from any rwy (incl 06L & 06R).

DE-ICING OPERATIONS

CENTRAL DE-ICING FACILITY (CDF)

OVERVIEW

All de-icing ops are performed with acft engines oprg, unless otherwise advised by Pad Control or ICEMAN.

Pad 1 & 5

- Centre lane will accommodate all acft.
- Acft with wingspans of 35.9m/118ft and smaller may use North/South lanes.

Pad 2, 3, 4 & 6

- Centre lanes will accommodate acft with wingspans 64.9m/213ft and smaller.
- Acft with wingspans of 35.9m/118ft and smaller may use North/South lanes.

1. Prior to departing Parking Position, ctc CLNC DEL/APRON/GND (as applicable) and advise, "ACFT DE-ICING REQUIRED".
2. On Twys T,V and E, hold short of ICE# and when directed by Ground Control monitor Pad Control on 131.17. Follow Pad Control taxi instructions to the entrance of the de-icing pad.
3. When directed by Pad Control ctc ICEMAN on the assigned freq (129.62 or 131.37).
4. Follow verbal instructions, guidance displays and lights (as applicable) into staging and/or de-icing bays.
5. Once acft is in final stop position, brakes are set and acft configured for de-icing, ctc ICEMAN and advise, "BRAKES SET, ACFT CONFIGURED, READY TO DE-ICE". At this time, pass along any specific fluid and/or treatment requirements.
6. After de-icing, do not move acft. Ctc Pad Control on 131.17 when instructed by ICEMAN to obtain taxi instruction.
7. Follow Pad Control instruction to designated exit points. When instructed by Pad Control ctc Ground Control on assigned freq.
8. Specific acft operations plan in effect for acft with wingspans 65m/214ft up to 79.9m/262ft. Restrictions in place include:
 - For Central De-icing Facility (CDF) operations, no turns from Twy E into any of the de-icing pads are permitted. The only taxi routes permitted for de-icing are via Twy T into Pad 5 and via Twy V into Pad 1.