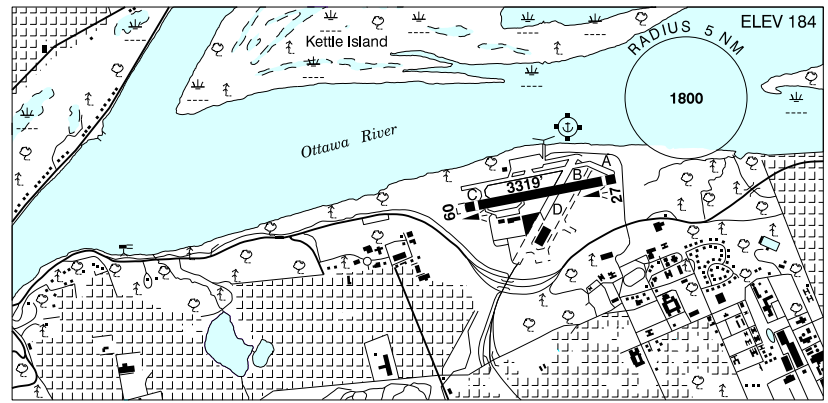


OTTAWA / ROCKCLIFFE ON

CYRO



REF	N45 27 38 W75 38 36 Adj NE 13°W (2016) UTC-5(4) Elev 184' A1905 A5000 A5002 LO6 LO7 T2 CAP
OPR	Rockcliffe Flying Club 613-746-4425 855-759-4425 Fax 613-746-3354 Cert 12Z† to SS & evenings when flying in progress.
PF	B-1 C-2,3,4,5,6
CUST	AOE/CAN
FLT PLN	(bil)
FIC	Québec 866-GOMÉTÉO or 866-WXBRIEF (Toll free within Canada) or 866-541-4105 (Toll free within Canada & USA)
ACC	Montreal 514-633-3211 or 800-633-1353, all Flt Plns, IFR tng PPR, Mon-Fri
SERVICES	
FUEL	100LL, JA-1 (FSII avbl) 1 HR PN CTC 613-746-4425
OIL	All
RWY DATA	Rwy 09(092°)/27(272°) 3319x100 ASPH Thld 09 displ 200'. Thld 27 displ 214'.
RWY CERT	Rwy 09/27 AGN II
TWY	Twy A, B & D rstd day use only
RCR	Opr Ltd win maint. Rstd to acft 18,000 lbs and under. PPR for acft over 18,000 lbs.
LIGHTING	09-(TE LO), 27-(TE LO) Ngt thld 249' fr end of Rwy 27 and 1341' fr end of Rwy 09 only 1730' lgtd ARCAL 123.5 type J (see CAUTION)
COMM	
RCO	Québec rdo (Gatineau) 123.375 (FISE)
ATF	UNICOM ltd hrs O/T tfc 123.5 5NM 3200 ASL excluding Gatineau CZ, Ottawa/Macdonald-Cartier Intl CZ and the airspace that lies within Ottawa TCA class C airspace.

OTTAWA / ROCKCLIFFE ON (Cont'd)

CYRO

PRO	<p>CIRCUITS: Rgt hand circuits Rwy 27 (CAR 602.96). As soon as practicable after tkof fr Rwy 09 or 27 turn 20° to the North.</p> <p>MUSEUM: Aircraft wishing to park at the Canada Aviation and Space Museum are requested to contact the Rockcliffe Flying Club, by telephone or unicom, for instructions prior to arrival.</p> <p>AIRSPACE: VFR FLIGHTS IN OTTAWA CLASS C AND TERMINAL CLASS C AIRSPACE SEE OTTAWA / MACDONALD-CARTIER INTL FOR PROCEDURES.</p> <p>VFR Codes: In order to minimize delays, ATC freq congestion and for better airspace management, as well as to improve safety, ctc the Montreal ACC at 866-VFR-CODE (866-837-2633), or the FIC at 1-866-GOMETEO or 1-866-WX BRIEF, to provide ATC with info pertaining to your flt to obtain your transponder code at least 30 min prior to a flight into Ottawa Class C airspace.</p>
CAUTION	<p>Sections of North apron breaking up & covered with loose gravel. Extv bird activity. Feb-May and Sep-Nov.</p> <p>Rstd areas CYR537 and CYR538 cont located 1.5NM W. Adjust flt path/altitude to avoid entry. See VTPC.</p> <p>ARCAL: Acft arr fr the E or S may not be able to activate ARCAL until aprx 1NM from the aprt. Acft on the ground positioned at the E end of the aprt may not be able to activate ARCAL until positioned closer to the W end of the aprt.</p>

ONTARIO

AERODROME / FACILITY DIRECTORY

OTTAWA M.-C.I. VFR TERMINAL PROCEDURES CHART (Cont'd)

NAME	IDENT	LAT/LONG
BELLS CORNERS	VCBCR	N45° 19' 12" W075° 50' 00"
CHAMPLAIN BRIDGE	VCCHB	N45° 24' 30" W075° 45' 30"
CHELSEA DAM	VCHEL	N45° 30' 48" W075° 46' 32"
CONSTANCE LAKE	VCCON	N45° 25' 00" W075° 59' 00"
CUMBERLAND	VCMBL	N45° 31' 00" W075° 24' 36"
DESCHENES QUARRY	VCQRY	N45° 25' 48" W075° 49' 12"
HWY 416 - CENTURY ROAD	VCNTY	N45° 11' 22" W075° 43' 16"
LAC MCGREGOR	VCPOU	N45° 38' 37" W075° 38' 52"
ORLEANS	VCORL	N45° 28' 34" W075° 31' 27"
RUSSELL	VCRSL	N45° 15' 27" W075° 22' 00"
THURSO	VCGUY	N45° 35' 55" W075° 14' 43"

VFR FLIGHTS IN OTTAWA MACDONALD-CARTIER CLASS C CZ AND TCA TERMINAL

In order to minimize delays, ATC frequency congestion and for better airspace management, as well as to improve safety, a procedure is available allowing VFR aircraft to obtain a transponder code prior to take off. This mandatory procedure applies to VFR aircraft that did not file a flight plan or flight itinerary with Nav Canada and wishing to penetrate or operate in the Ottawa/MacDonald-Cartier Class C and terminal Class C airspace. All acft not respecting mandatory transponder code procedure will not be accepted in Ottawa/MacDonald-Cartier Class C CZ and TCA C airspace.

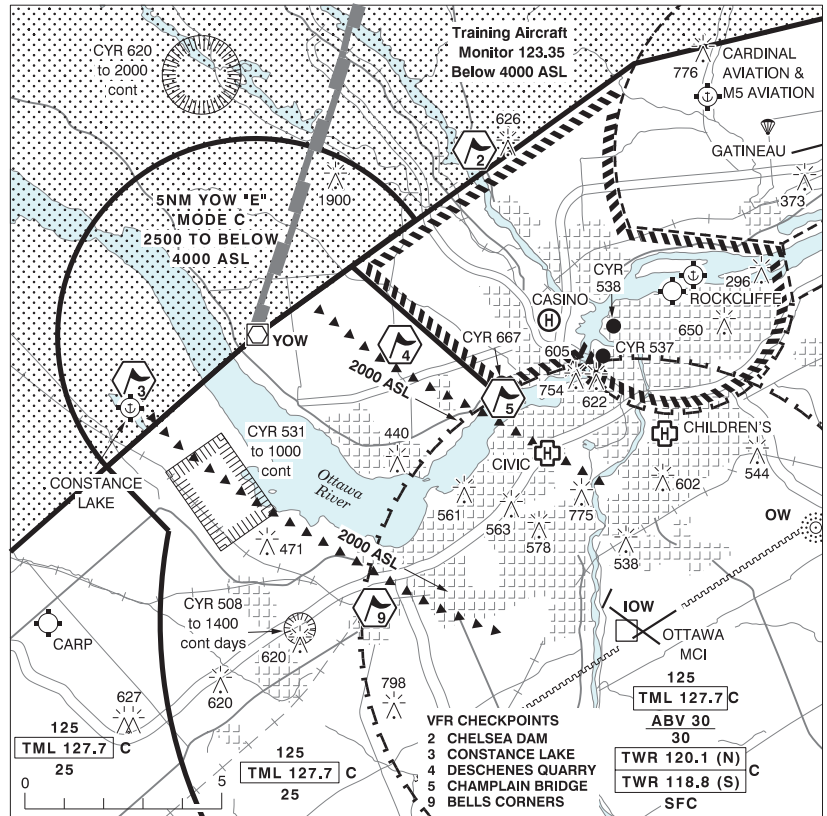
To obtain a transponder code:

A discrete transponder code shall be obtained at least 30 minutes prior to the flight taking off toward Ottawa/MacDonald-Cartier Class C CZ and TCA airspace, by contacting the Montreal ACC at 866-VFR-CODE (866-837-2633), or the FIC at 1-866-GOMETEO or 1-866-WX BRIEF, and providing ATC with flight information. Aircraft departing CYUL, CYJN, CYHU, CYOW, CYMX or CYND will obtain their transponder code from the Control Tower or FSS.

Flight procedure:

1. Set your transponder to the assigned code prior to your first communication with ATC.
2. To the extent possible, etc ATC at least 5NM prior to entering Ottawa/MacDonald-Cartier Class C and terminal Class C airspace.

OTTAWA M.-C.I. WEST VFR ARR/DEP PROCEDURES CHARTS

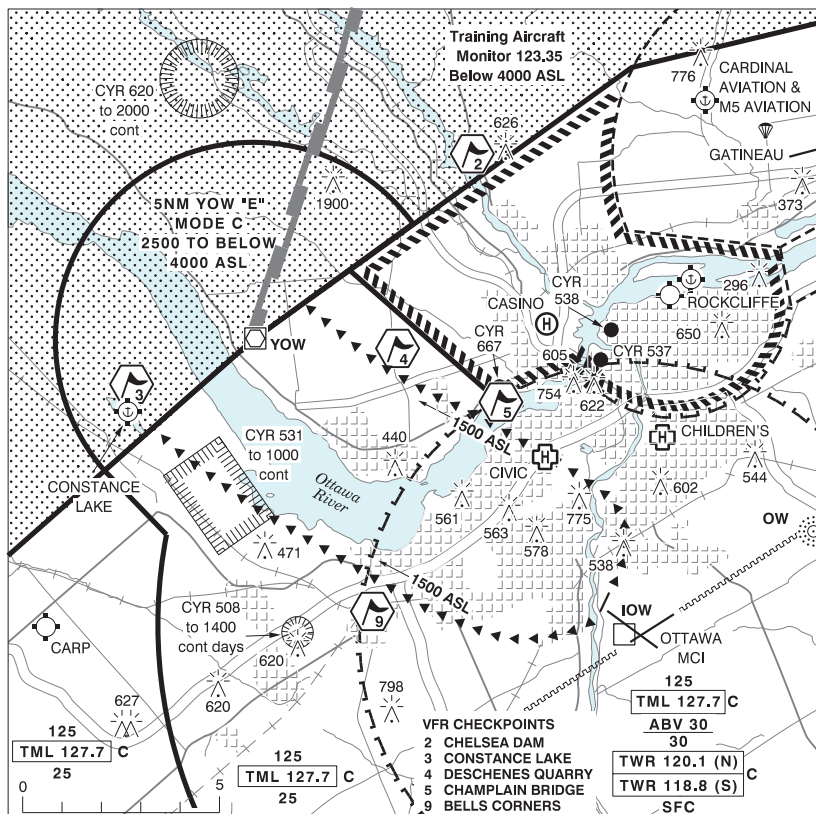


OTTAWA M.-C.I. WEST ARRIVALS

ATIS	TML	TWR		GND
		North	South	
English 121.15 French 132.95	127.7	120.1	118.8	121.9

- PROCEDURES:**
- Rwy 22, proceed via E side of Ottawa River to Deschenes Quarry & then direct Champlain Bridge at 2000 ASL. Anticipate circuit instruction.
 - Rwy 04, proceed via W side of Ottawa River to Constance Lake, then direct Bells Corners at 2000 ASL.
 - All other VFR acft should anticipate arr instructions from ATC.

OTTAWA M.-C.I. WEST VFR ARR/DEP PROCEDURES CHARTS (Cont'd)



OTTAWA M.-C.I. WEST DEPARTURES

ATIS	CLNC DEL	GND	TWR		TML
			North	South	
English 121.15 French 132.95	119.4	121.9	120.1	118.8	127.7

Unless otherwise instructed by ATC, Contact North Tower on 120.1 when ready

- Bells Corners Departure (Depart Rwy 22), climb rwy hdg to Rideau River remaining north of Rwy 25 centerline at all times. At Rideau River, turn rgt hdg 250, climb to 1300 ASL. At 1300 ASL, continue climb not abv 1500 ASL direct Bells Corners and then to Constance Lake.

* Contact Ottawa Terminal on 127.7 at Bells Corners.

- Champlain Bridge Departure (Depart Rwy 04), left turn direct Champlain Bridge then to Deschenes Quarry climb not abv 1500 ASL.

* Contact Ottawa Terminal on 127.7 at the Bridge

- All other VFR acft should anticipate dep Instructions from ATC.

OTTAWA TCA VFR TERMINAL PROCEDURES CHART (Cont'd)

NAME	IDENT	LAT/LONG
BELLS CORNERS	VCBCR	N45° 19' 12" W075° 50' 00"
CHAMPLAIN BRIDGE	VCCHB	N45° 24' 30" W075° 45' 30"
CHELSEA DAM	VCHEL	N45° 30' 48" W075° 46' 32"
CONSTANCE LAKE	VCCON	N45° 25' 00" W075° 59' 00"
CUMBERLAND	VCMBL	N45° 31' 00" W075° 24' 36"
DESCHENES QUARRY	VCQRY	N45° 25' 48" W075° 49' 12"
HWY 416 - CENTURY ROAD	VCNTY	N45° 11' 22" W075° 43' 16"
LAC MCGREGOR	VCPOU	N45° 38' 37" W075° 38' 52"
ORLEANS	VCORL	N45° 28' 34" W075° 31' 27"
RUSSELL	VCRSL	N45° 15' 27" W075° 22' 00"
THURSO	VCGUY	N45° 35' 55" W075° 14' 43"

OTTAWA TERMINAL (emerg only 514-633-3365)