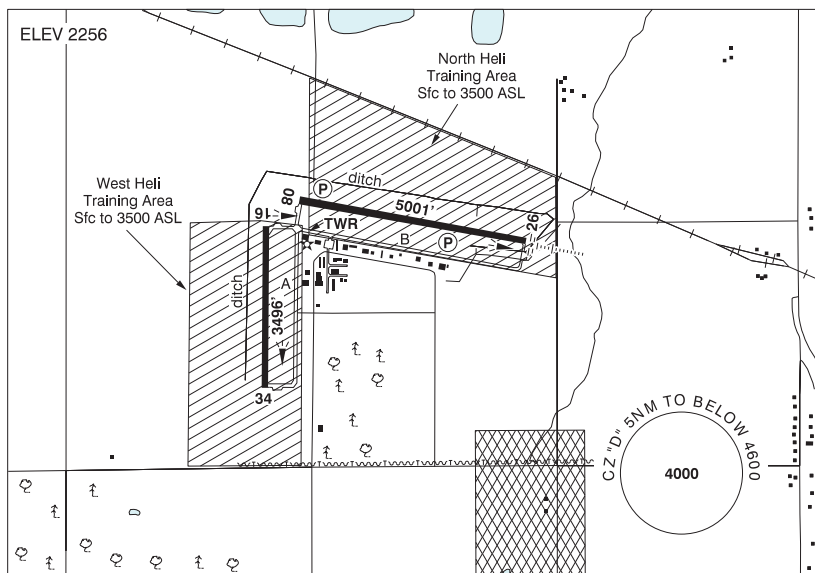


EDMONTON / VILLENEUVE AB

CZVL



<b>REF</b>	N53 40 06 W113 51 08 1W 14°E (2020) UTC-7(6) Elev 2256' VTA A5015 LO1 LO2 HI3 T1 CAP
<b>OPR</b>	Edmonton Regional Airports Authority 780-890-8327 H24 Cert
<b>PF</b>	A-1 avbl 1430-2300Z† D-2,3,4,5,6
<b>CUST</b>	AOE/15 (Cost Recovery) 888-226-7277 14-22Z†
<b>FLT PLN</b>	<p><b>FIC</b> Edmonton 780-890-8386 or Edmonton 866-WXBRIEF (Toll free within Canada) or 866-541-4102 (Toll free within Canada &amp; USA)</p> <p><b>ACC</b> Edmonton IFR 888-358-7526</p> <p><b>WX</b> METAR AUTO H24 (see COMM) TAF H24, issue times: 00, 06, 12, 18Z WxCam</p>
<b>SERVICES</b>	<p><b>FUEL</b> 100LL, JA-1 (FSII avbl), SP Villeneuve Aviation Centre Inc. 780-460-0470 Mon-Fri 14-01Z†, Sat 15-23Z†, Sun 17-21Z† O/T call out chgs apply. Fuel truck avbl. Automated credit card processing cardlock. Cardinal Aviation Centre FBO 780-459-0952/780-446-5949 Mon-Sat 15-23Z† Sun 20-23Z† O/T 780-446-5949. HQ Fuels Ltd. Automated credit card processing. Fuel truck avbl 888-451-4621</p> <p><b>OIL</b> All</p> <p><b>S</b> 1,2,3,4,5,6</p>

## ALBERTA

## AERODROME / FACILITY DIRECTORY

## EDMONTON / VILLENEUVE AB (Cont'd)

CZVL

<b>RWY DATA</b>	Rwy 08(086°)/26(266°) 5001x100 ASPH Rwy 08 down 0.42% Rwy 16(166°)/34(346°) 3496x100 ASPH RESA: 08/26 295'
<b>RWY CERT</b>	Rwy 08/26 AGN IIIB Rwy 16/34 AGN II
<b>TWY CERT</b>	Twy: A,B AGN II
<b>APRON</b>	Apron II PPR fr tenant or opr for access. Bcst intentions on 123.45. Apron II rstd to acft with wingspans less than 59.1'.
<b>RCR</b>	Opr Ltd hrs, 3 hrs PN. Call out fee may be levied. CRFI, PLR/PCN.
<b>LIGHTING</b>	08-(TE HI) P2, 26-AN(TE HI) P2, 16-(TE ME), 34-(TE ME) ARCAL-118.8 type K
<b>COMM</b>	<p><b>ATIS</b> 128.35 15-04Z‡</p> <p><b>GND</b> Villeneuve 120.8 15-04Z‡</p> <p><b>TWR</b> Villeneuve 118.8 (V) 15-04Z‡ (emerg only 780-458-5828)</p> <p><b>ATF</b> tfc 118.8 04-15Z‡ 5NM to below 4600 ASL</p> <p><b>ARR</b> Edmonton Tml 119.5</p> <p><b>DEP</b> Edmonton Tml 119.5</p> <p><b>VFR ADV</b> Edmonton Tml 127.4 in Class C</p> <p><b>AWOS</b> 128.35 04-15Z‡</p>
<b>NAV</b>	<p><b>DME</b> IVL 111.95 Ch 56(Y) N53 40 23 W113 50 36 (2251')</p> <p><b>ILS</b> IVL 111.95 (Rwy 26) RVR LOC reliable only within 10° either side of centreline.</p>
<b>PRO</b>	<p>Rgt hand circuits Rwy 16 &amp; 26 (CAR 602.96). Pilots to close VFR flt plans with Edmonton FIC (phone) when practicable or request closure fr ATC. For VFR routes see Edmonton VTPC or as directed by ATC. Edmonton Class C Airspace overlies CZ. TRANSPONDER MANDATORY - Acft operating in Edmonton Class C require a discrete transponder code which may be obtained by filing a flt plan or ctc 888-358-7526 at least 30 min prior to entering. IFR Training Restriction: PPR for IFR tng flights. Ctc ATC 888-358-7526 no more than 24 hrs prior to ETD.</p> <p><b>HELI OPS:</b> Use Heli Training Area "NORTH" or "WEST" sfc to 3500 ASL. Remain North of Taxiway Bravo while using North Heli training area. Remain West of Taxiway Alpha while using West Heli training area.</p>
<b>CAUTION</b>	Deer in vic of rwys. Aerobatics may be in progress over aprt 5800 ASL & below. Rising terrain immediately S of thld Rwy 34. Avoid flt over noise sensitive areas.