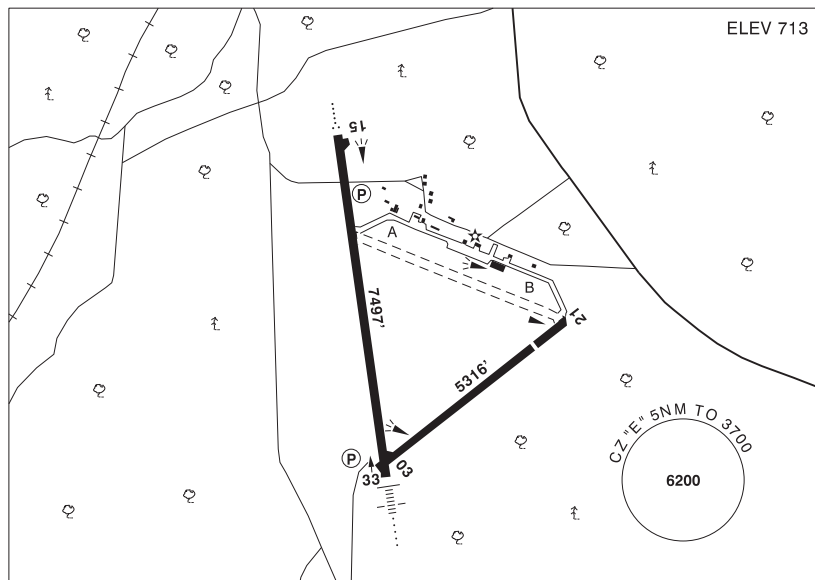


BRITISH COLUMBIA

AERODROME / FACILITY DIRECTORY

TERRACE BC

CYXT



REF	N54 28 07 W128 34 42 3S 19°E (2014) UTC-8(7) Elev 713' A5013 LO1 HI3 CAP
OPR	Terrace-Kitimat Aprt Society 250-635-2659 13-08Z± Cert
PF	A-1,2,3,6,7 C-4,5
FLT PLN	<p>FIC Kamloops 866-WXBRIEF (Toll free within Canada) or 866-541-4101 (Toll free within Canada & USA)</p> <p>WX METAR H24. TAF H24, issue times: 01, 07, 13, 19Z.</p>
SERVICES	<p>FUEL 100LL, JA-1 (FSII avbl) 1230-0400Z±, 250-638-1564, O/T call out chg may be levied.</p> <p>OIL All</p> <p>S 5 May 01-Oct 31</p> <p>ARFF DESIGNATED CAT 6 1330-0740Z± for scheduled commercial acft 20 seats & abv, other acft 2 hr PN 250-615-7636. Call out chg. Executive Flight Centre 250-638-1564 Fax 250-638-1589</p> <p>PVT ADV Executive Flight Centre Fuel 250-638-1564</p> <p>MILCON Executive Flight Centre Fuel 250-638-1564</p>

BRITISH COLUMBIA

AERODROME / FACILITY DIRECTORY

TERRACE BC (Cont'd)

CYXT

RWY DATA	Rwy 15(153°)/33(333°) 7497x148 ASPH Rwy 03(033°)/21(213°) 5316x148 ASPH Thld 21 displ 797' Rwy 21 down 0.69%
RWY CERT	Rwy 15 RVR 1200(1/4sm) Day only/Rwy 33 RVR 1200(1/4sm) Day only AGN IV Rwy 03/21 AGN IIIA
TWY CERT	Twy: A, B AGN IIIB
TWY	Twy B uncontrolled first 2000' fr apron
APRON	Tran acft must park in SE corner of Apron. Itinerant parking with tiedowns on grass May to Oct. N side main apron stands 1-3 are rstd to sked tfc only. All stands PPR. Itinerant pilot/pax access via pilot access door on E end of tml bldg. No access/egress via tml bldg facility is permitted. Exceptions require prior approval of aprt opr. Corporate itinerant prkg ctc Executive Flight Centre.
RCR	Opr Win maint 13-08Z± O/T 2 hrs PN 250-615-7636, cost recovery. Rwy 03/21 no win maint. Ltd hrs CRFI, PLR/PCN
LIGHTING	15-AO(TE HI) P2 3.5°, 33-AN(TE HI) P2 3.5° ARCAL-122.0 type K PAPI limitation/restriction. PAPI Rwy 33 to be used only within 2NM of thld.
COMM	
RADIO	122.0 PTC avbl (E) (emerg only 250-635-2110)
RCO	Pacific rdo 123.375(FISE) 126.7 (bcst)
MF	rdo 122.0 5NM 3700 ASL (CAR 602.98)
PAL	Vancouver Ctr 128.4 269.1
NAV	
NDB	XT 332 (M) N54 22 27 W128 35 04 KITIMAT ZKI 203 (M) N54 03 15 W128 40 12
DME	IXT 110.1 Ch 38 N54 27 39 W128 35 16
ILS	IXT 110.1 (Rwy 33) LOC reliable only within 10° either side of centerline.
PRO	Rgt hand circuits Rwy 33 (CAR 602.96). Ngt circuit pro, see VTPC.
CAUTION	Ngt ops not recommended unless all hazard bcns are oprg. Recommend that only pilots familiar with the local area use the aprt dur the hrs of darkness. Hi terrain reduces operational length of Rwy 33 PAPI. Displ thld 21 marked by hi vis barrels.