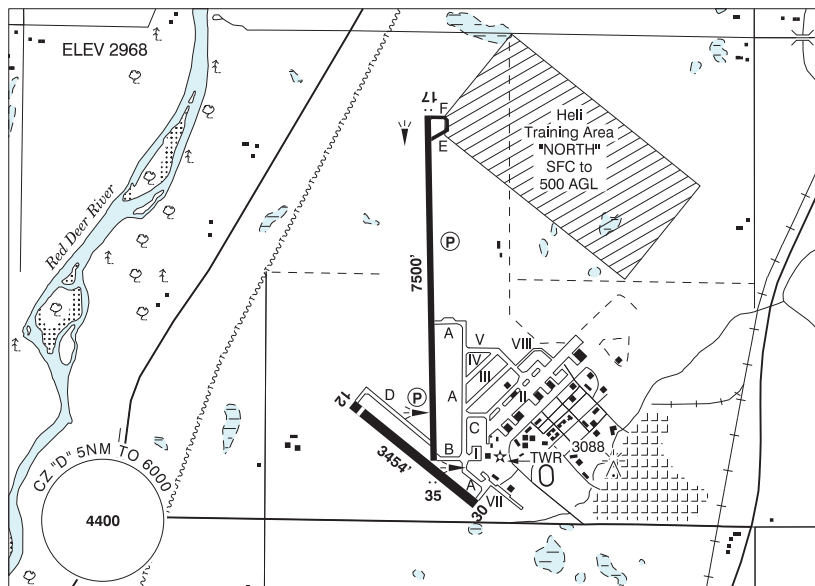


RED DEER REGIONAL AB

CYQF



REF	N52 11 06 W113 53 40 6SSW 14°E (2016) UTC-7(6) Elev 2968' A5005 A5015 LO2 HI3 CAP
OPR	Red Deer Regional Aprt Authority 403-886-4388 Cert Ldg fees
PF	A-1,2,3,7 C-2,3,4,5,6
FLT PLN	<p>FIG Edmonton 866-WXBRIEF (Toll free within Canada) or 866-541-4102 (Toll free within Canada & USA)</p> <p>ACC Edmonton IFR 888-358-7526</p> <p>WX METAR AUTO H24 (see COMM) WxCam TAF H24, issue times: 00, 06, 12, 18Z.</p>
SERVICES	Call out chg may be levied for one or more svcs
FUEL	100LL, JA Hillman Air (100LL only, self serve); Sky Wings Avn (Executive Fit Centre) 15-04Z‡; Tucana Avn
OIL	All
S	1,2,3,5 Tucana Avn
SUP FL	D & A-ice 2 hr PN Tucana Avn, LPOX
JASU	10/15
PVT ADV	Hillman Air 403-886-4187; Sky Wings Avn (Executive Flt Centre) 123.4 403-886-5191 15-04Z‡; Tucana Avn 403-596-6320.
RWY DATA	Rwy 17(165°)/35(345°) 7500x150 ASPH Rwy 12(115°)/30(295°) 3454x100 ASPH Thld 12 displ 200' Rwy 30 up 0.52% RESA: 17/35 492'
RWY CERT	Rwy 17/35 AGN IIIB Rwy 12/30 AGN II
TWY CERT	Twy D AGN II
RCR	Opr CRFI & Win maint 1330-2200Z‡ Mon-Fri exc hols, O/T 2 hrs PN ctc 403-318-7842. Call out charge may be levied. PLR.

ALBERTA

AERODROME / FACILITY DIRECTORY

RED DEER REGIONAL AB (Cont'd)

CYQF

LIGHTING	12-(TE ME), 30-(TE ME), 17-AS(TE HI) P2, 35-AS(TE HI) P2 ARCAL-118.5 type K when TWR clsd
COMM	
RCO	Edmonton rdo 123.475 (FISE) 126.7 (bcst)
ATIS	124.0 13-05Z‡
GND	121.9 13-05Z‡
TWR	118.5 (V) 13-05Z‡ (emerg only 403-886-4547)
MF	tfc 118.5 05-13Z‡ 5NM 6000 ASL (CAR 602.98)
PAL	Edmonton Ctr 132.85
AWOS	124.0 05-13Z‡
NAV	
NDB	Red Deer YQF 320 (L) N52 07 42 W113 53 58
DME	Red Deer 6G 113.8 Ch 85 N52 10 52 W113 52 58 (2974') Pvt
PRO	Rgt hand circuits Rwys 12 & 17 (CAR 602.96).
HELI	Use Heli Training Area "NORTH" sfc to 500 AGL.
CAUTION	Wildlife in vic of rwys. Acft at opposite ends of Rwy 17/35 may not be vis to each other. Twy D sfc ruf. Practice IFR approaches in vic Rwy 17/35 extended ctr lines beyond CZ. Extv flt tng within 20NM of A/D, all quadrants to 6500 ASL. Parajumps activity in vic Innisfail A/D 8NM SSW check for NOTAM. Intsv gliding activity to 6400 ASL in vic Olds (Netook) A/D 21NM S by NOTAM. Winch cable may extend from sfc to 5800 ASL (2500 AGL).