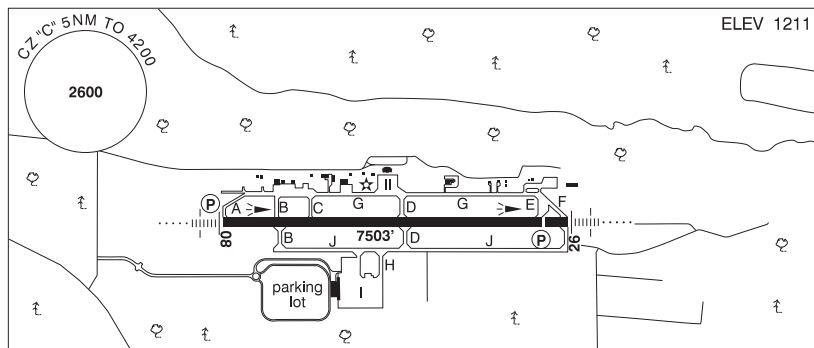


## ALBERTA

## AERODROME / FACILITY DIRECTORY

## FORT McMURRAY AB

CYMM



<b>REF</b>	N56 39 12 W111 13 24 7SE 15°E (2012) UTC-7(6) Elev 1211' A5023 LO1 HI2 HI3 CAP
<b>OPR</b>	Fort McMurray Aprt Authority 780-793-8970 Cert Ldg fees
<b>PF</b>	A-1,2,3,6,7 C-4,5
<b>FLT PLN</b>	<p><b>FIG</b> Edmonton 866-WXBRIEF (Toll free within Canada) or 866-541-4102 (Toll free within Canada &amp; USA)</p> <p><b>ACC</b> Edmonton IFR 888-358-7526</p> <p><b>WX</b> METAR AUTO H24 (see COMM) WxCam TAF H24, issue times: 01, 07, 13, 19Z.</p>
<b>SERVICES</b>	Call out chg for after hrs svcs. Ramp fees 24 hrs.
<b>FUEL</b>	100LL, JA-1 (FSII avbl)
<b>OIL</b>	All
<b>S</b>	1,2,3,4,5,6,7
<b>ARFF</b>	DESIGNATED CAT 6 1245-0815Z±, O/T call out chg PN, outside CAT 6 hrs PPR for acft 20 seats & abv, exc for diversions or as an altn A/D
<b>SUP FL</b>	D & A-ice
<b>PVT ADV</b>	Executive Flight Centre 123.0 780-791-5551
<b>MIL CON</b>	Executive Flight Centre Fuel Services Ltd 780-791-5551
<b>RWY DATA</b>	Rwy 08(075°)/26(255°) 7503x150 ASPH Thld 26 displ 500'
<b>RWY CERT</b>	Rwy 08 RVR 1200(1/4sm)/Rwy 26 RVR 1200(1/4sm) AGN IV
<b>TWY CERT</b>	Twy: C, G AGN IIIB
<b>TWY</b>	Twy C and G rstd to acft wingspan 118' or less. Twy H uncontrolled
<b>APRON</b>	ATB Apron I: Ltd prkg. 2hr PN for non-sked acft 780-793-8970. All acft shall enter via the W entrance and exit via Twy H. All acft will be marshalled in and push-back is mandatory. ATB apron II: Ltd prkg. 24 hr PN for non-sked acft 780-793-8970. All acft will be marshalled in and push-back is mandatory.
<b>RCR</b>	Opr Win maint 13-06Z± O/T 2hr PN cost recovery. CRFI, PLR/PCN
<b>LIGHTING</b>	08-AN(TE HI) P2, 26-AN(TE HI) P2 ARCAL-118.1 type K 0545-1315Z±

## ALBERTA

## AERODROME / FACILITY DIRECTORY

## FORT McMURRAY AB (Cont'd)

CYMM

<b>COMM</b>	<p><b>RCO</b> Yellowknife rdo 118.1 (RAAS) 0545-1315Z† (emerg only 867-873-4049) Edmonton rdo 123.55 (FISE) 126.7 (bcst)</p> <p><b>ATIS</b> 128.5 1315-0545Z†</p> <p><b>GND</b> McMurray 121.9 1315-0545Z†</p> <p><b>TWR</b> McMurray 118.1 236.6 (E) 1315-0545Z† (emerg only 780-743-2511)</p> <p><b>MF</b> Yellowknife rdo 118.1 0545-1315Z† 5NM 4200 ASL (CAR 602.98)</p> <p><b>PAL</b> Edmonton Ctr 135.7</p> <p><b>AWOS</b> 128.5 0545-1315Z†</p>
<b>NAV</b>	<p><b>VOR/DME</b> YMM 112.0 Ch 57 N56 38 52 W111 07 21 (1205')</p> <p><b>DME</b> YFF 115.6 Ch 103 N56 39 12 W111 20 08 (1306')</p> <p><b>ILS</b> IMM 109.9 (Rwy 26) RVR LOC reliable only within 10° either side of centreline.</p>
<b>PRO</b>	<p>Rgt hand circuits Rwy 08 (CAR 602.96). Transponder MODE C required within the 25 NM Fort McMurray Class E control area extension, the 15 NM Class E transition area &amp; 5 NM control zone. Fit Pln open and close with Edmonton FIC on 123.55 (FISE). Pilots to close VFR flt plans with Edmonton FIC (phone or FISE freq) when practicable or request closure fr ATC. North Oil Sands ATF Area 123.5 north of local CZ, see Fort Mackay VTPC and Section C – Areas With Discrete Air-To-Air Frequencies.</p> <p><b>HELI PRO:</b> Ctc gnd for repositioning and dep instructions.</p>
<b>CAUTION</b>	Do not confuse Twy J with Rwy 08/26.