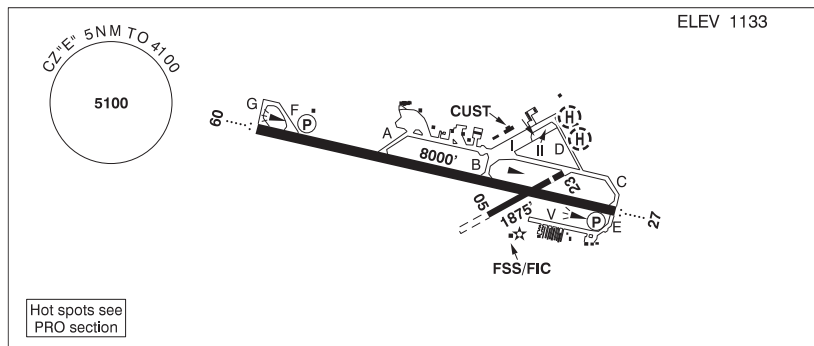


## BRITISH COLUMBIA

## AERODROME / FACILITY DIRECTORY

## KAMLOOPS BC

CYKA



<b>REF</b>	N50 42 09 W120 26 55 5WNW 16°E (2016) UTC-8(7) Elev 1133' A5004 LO2 HI3 CAP RCAP
<b>OPR</b>	Kamloops Aprt Ltd 250-376-3613 Cert
<b>PF</b>	A-1,2,3,6 C-4,5
<b>CUST</b>	AOE/15 1630-0800Z± AOE/30 1630-0030Z± Mon-Fri exc hols 888-226-7277
<b>FLT PLN</b>	
<b>FIC</b>	Kamloops 866-WXBRIEF (Toll free within Canada) or 866-541-4101 (Toll free within Canada & USA) or 250-376-8392
<b>WX</b>	METAR H24. TAF H24, issue times: 01, 07, 13, 19Z.
<b>SERVICES</b>	Call out chg may be levied for one or more svcs
<b>FUEL</b>	100LL, JA-1 (FSII avbl)
<b>OIL</b>	80, 100, 120
<b>S</b>	1 (ltd), 2,3,4,5,6 (ltd)
<b>ARFF</b>	DESIGNATED CAT 6 14-08Z±, O/T 2 hr PN 250-376-3233 call out chg
<b>PVT ADV</b>	Shell 123.0 250-376-7633; Executive Flight Centre 122.85 250-376-9069
<b>MIL CON</b>	Executive Flight Centre Fuel 250-376-9069
<b>RWY DATA</b>	Rwy 09(087°)/27(267°) 8000x148 ASPH Rwy 05(045°)/23(225°) 1875x49 ASPH Thld 23 displ 249'.
<b>RWY CERT</b>	Rwy 05/23 AGN I Rwy 09/27 AGN IIIB
<b>TWY CERT</b>	Twy: D, E AGN II
<b>TWY</b>	Twy A, no vehicle ctl first 600' W of Apron I. Twy E: Unlgtd
<b>APRON</b>	Apron 1: Uncontrolled, avbl to sked pax flt only. All acft must yield to acft in pushback from ATB. Prkg fees. Apron II: Uncontrolled, avbl for transient and itinerant prkg. All acft must yield to acft in pushback from ATB. Pilot/pax access via groundside Gate 10 only; no access/egress permitted via ATB. Prkg fees. Apron V: Uncontrolled, PPR for prkg on or within 25' of aprn.
<b>RCR</b>	FSS Win maint 13-08Z± O/T 2 hrs PN cost recovery. CRFI, PLR/PCN.
<b>LIGHTING</b>	09-AO(TE ME) P2, 27-AO(TE ME) P2 ARCAL-125.7 type K avbl when FSS clsd PAPI limitation/restriction. PAPI Rwy 09 to be used only within 4NM of thld; PAPI Rwy 27 to be used only within 4NM of thld. Twy D RR.

## BRITISH COLUMBIA

## AERODROME / FACILITY DIRECTORY

## KAMLOOPS BC (Cont'd)

CYKA

<b>COMM</b>	<b>RADIO</b> 125.7 PTC avbl (V) (emerg only 250-376-7941) <b>RCO</b> Pacific rdo 123.375 (FISE) 126.7 (bcst) <b>CLNC DEL</b> 121.9 PTC avbl ltd hrs <b>MF</b> rdo 125.7 5NM 4100 ASL (CAR 602.98) <b>PAL</b> Vancouver Ctr 132.35 133.5 134.4 236.0
<b>NAV</b>	<b>DME</b> IKA 109.3 Ch 30 N50 42 14 W120 27 41 (1136') <b>ILS</b> IKA 109.3 (Rwy 09) <b>LOC</b> IPP 109.9 (Rwy 27) reliable only within 10° of centreline.
<b>PRO</b>	Pilots should refer to Canadian Airport Charts (CAC) to obtain details on established hot spots, prior to operating on maneuvering areas. CAC are available for free on the NAV CANADA website. Day: rgt hand circuits Rwys 05, 23 & 27 (CAR 602.96). Night: follow VTPC night circuit pro. Tkof and ldg in grass adj rwys by fixed-wing acft not auth.
<b>CAUTION</b>	Only pilots familiar with lcl terrain should use this aprt dur hrs of darkness. Ngt ops not recommended unless all 6 hazard beacons are oprg. Hi terrain reduces operational length of Rwys 09 and 27 PAPI. Painted & lgtd twr 1253 ASL (128 AGL) aprx 250' beyond Thld 05 and aprx 2710' NW rwy centreline. Fuel facility (tanks 80 AGL) aprx 0.5NM NE A/D; no low alt heli ops.