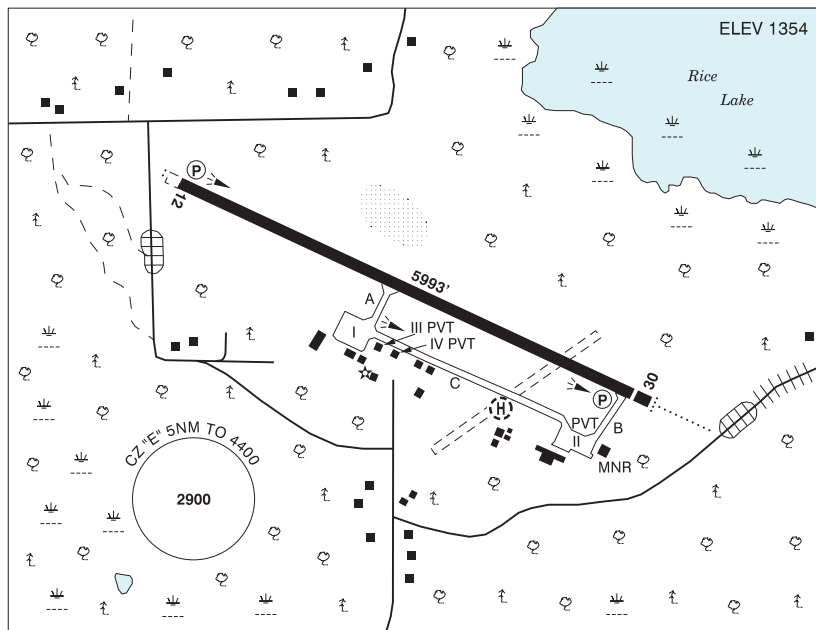


## ONTARIO

## AERODROME / FACILITY DIRECTORY

## DRYDEN REGIONAL ON

CYHD



<b>REF</b>	N49 49 53 W92 44 37 4.3NE 1°W (2012) UTC-6(5) Elev 1354' A5007 LO4 HI4 CAP
<b>OPR</b>	City of Dryden/The Loomex Group 807-223-1130 13-01Z ‡ Mon-Fri, 13-23Z ‡ Sat-Sun O/T 1 hr PN Cert Ldg fees
<b>PF</b>	A-1,6,7,8 avbl 12-01Z ‡ C-2,3,4,5,6 After hrs groundside access at FBO gate code 351
<b>FLT PLN</b>	Pilots to open/close VFR flt plan with London rdo, FISE or by phone
<b>FIC</b>	London 866-WXBRIEF (Toll free within Canada) or 866-541-4104 (Toll free within Canada & USA)
<b>WX</b>	METAR AUTO H24 (See COMM) TAF H24, issue times: 02, 08, 14, 20Z. WxCam
<b>SERVICES</b>	PN and svc chg apply for after hr svc
<b>FUEL</b>	100LL, JA-1 (FSII avbl) May 1-Sep 30 13-01Z ‡, Oct 1-Apr 30 14-23 ‡, ctc 807-221-8032 or 807-937-5122 or Fax 807-937-6222
<b>OIL</b>	20W50 and TURBO 2380 only
<b>S</b>	1(ltd),2,3,4,5,6
<b>MILCON</b>	Morgan Aviation 807-937-5122
<b>RWY DATA</b>	Rwy 12(116°)/30(296°) 5993x150 ASPH Thld 30 displ 197'.
<b>RWY CERT</b>	Rwy 12/30 AGN IV
<b>TWY</b>	Twy C asphalt, 1000' mid-section gravel sfc.
<b>APRON</b>	Apron I public, overnight pkg fees, Apron II pvt PN 807-223-1130, Apron III pvt, Apron IV pvt
<b>RCR</b>	Opr Ltd hrs (see OPR). Call out chg after hrs CRFI, PLR/PCN 1 hr PN 807-323-1954.
<b>LIGHTING</b>	12-AS(TE HI) P1, 30-AD(TE HI) P1 ARCAL-122.1 type K

## ONTARIO

## AERODROME / FACILITY DIRECTORY

## DRYDEN REGIONAL ON (Cont'd)

CYHD

<b>COMM</b>	<b>RCO</b>	Sioux Lookout rdo 122.1 (RAAS)
	<b>MF</b>	Sioux Lookout rdo 122.1 5NM 4400 ASL (CAR 602.98)
	<b>PAL</b>	Winnipeg Ctr 132.2
	<b>A/G</b>	MNR Ops 122.9
	<b>AWOS</b>	128.7
<b>NAV</b>	<b>DME</b>	IHD 109.7 Ch 34 N49 50 06 W92 44 59 (1349')
	<b>ILS</b>	IHD 109.7 (Rwy 12) RVR LOC reliable only within 10° either side of centreline.
	<b>CAUTION</b>	Rock outcrop 740' from dep end of Rwy 12, 690' rgt of centreline 1465 ASL. Possibility of wildlife within aprt perimeter. Aerobatics may be in progress over aprt 4400 ASL & below.