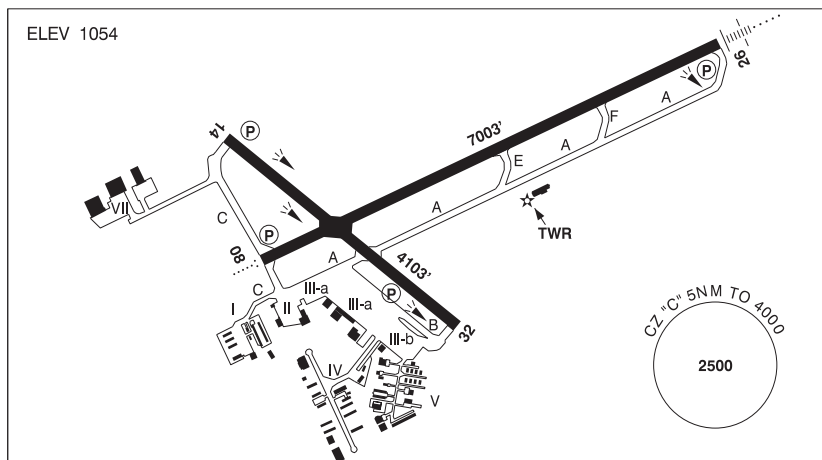


## ONTARIO

## AERODROME / FACILITY DIRECTORY

## KITCHENER / WATERLOO ON

CYKF



|                 |   |
|-----------------|---|
| <b>REF</b>      | N43 27 39 W80 22 43 1E 10°W UTC-5(4) Elev 1054' VTA A5000 LO6 HI5<br>CAP OC   |
| <b>OPR</b>      | Regional Muni of Waterloo 519-648-2256<br>H24 Cert Ldg fees are applied to all acft above 2500 Kg max tkof wt   |
| <b>PF</b>       | A-1,3,6,7,8 B-2 avbl 13-20Z† Mon-Sat C-4,5  |
| <b>CUST</b>     | AOE/15 888-226-7277 Gen Avn only<br>AOE/180 12-04Z† 519-648-3858 2hrs PN  |
| <b>FLT PLN</b>  |   |
| <b>FIC</b>      | London 866-WXBRIEF (Toll free within Canada) or 866-541-4104 (Toll free within<br>Canada & USA)   |
| <b>WX</b>       | METAR AUTO H24 (see COMM)<br>WxCam<br>TAF H24, issue times: 0140, 0740, 1340, 1940Z.  |
| <b>SERVICES</b> |   |
| <b>FUEL</b>     | 100LL, JA (FSII avbl), JA-1 (FSII avbl)   |
| <b>OIL</b>      | 80, 100   |
| <b>S</b>        | 1,2,3,4,5,6   |
| <b>ARFF</b>     | DESIGNATED CAT 7 for sked pax fit. CAT 7 for non-sked 45 min PN 519-648-3370.<br>PPR for acft 20 seats and abv, exc for diversions or as an altn.   |
| <b>JASU</b>     | Air Start   |
| <b>PVT ADV</b>  | Chartright 129.475 905-671-4674 ext 125 1100-0130Z† O/T call out chg. Flite Line<br>svc 130.5 519-514-0530 11-01Z† O/T call out chg.<br>Summit Fuel Services 123.5 519-497-8091 12-02Z† O/T call out chg. |
| <b>MIL CON</b>  | Chartright FBO 800-595-9395   |

## ONTARIO

## AERODROME / FACILITY DIRECTORY

## KITCHENER / WATERLOO ON (Cont'd)

CYKF

|                 |   |
|-----------------|---|
| <b>RWY DATA</b> | Rwy 14(138°)/32(318°) 4103x148 ASPH<br>Rwy 08(075°)/26(255°) 7003x148 ASPH Rwy 26 down 0.44%<br>RESA: 08 197'; 26 295'  |
| <b>RWY CERT</b> | Rwy 14/32 AGN IIIA<br>Rwy 08 RVR 1200(1/4sm)/Rwy 26 RVR 1200(1/4sm) AGN IIIB  |
| <b>TWY CERT</b> | Twy B AGN IIIA  |
| <b>APRON</b>    | Apron I max wingspan 50'.<br>Apron II max wingspan 55'. Turbine acft PPR.<br>Apron IIIA tml apron for air carriers only. Max wingspan 118', larger acft PPR.<br>Apron IIIB GA freight max wingspan 118', larger acft PPR.<br>Apron IV max wingspan 118'.<br>Apron V max wingspan 79'.<br>Apron VII max wingspan 170'.   |
| <b>RCR</b>      | Aprt Ops 519-648-3370 CRFI/RSC avbl H24. PCN  |
| <b>LIGHTING</b> | 08-AO(TE HI) P2, 14-(TE HI) P1, 26-AN(TE HI) P2, 32-(TE HI) P1<br>ARCAL-126.0 type K when twr clsd. PAPI Rwy 14, 32 and 26 not avbl on ARCAL, on continuously: low ints at SS minus 30 min to SR minus 30 min, high ints at SR minus 30 min to SS minus 30 min.   |
| <b>COMM</b>     | <p><b>ATIS</b> 125.1 12-04Z‡</p> <p><b>GND</b> Waterloo 121.8 12-04Z‡</p> <p><b>TWR</b> Waterloo 126.0 118.55 (V) 12-04Z‡ (emerg only 519-648-3055)</p> <p><b>MF</b> 126.0 04-12Z‡ 5NM 4000 ASL (CAR 602.98)</p> <p><b>ARR</b> Toronto Tml 128.275</p> <p><b>DEP</b> Toronto Tml 128.275</p> <p><b>PAL</b> Toronto Ctr 128.275</p> <p><b>AWOS</b> 125.1 04-12Z‡</p>   |
| <b>NAV</b>      | <p><b>DME</b> WATERLOO YWT 115.0 Ch 97 N43 27 31 W80 22 46 (1047')</p> <p><b>ILS</b> IKF 110.7 (Rwy 26)</p>   |
| <b>PRO</b>      | <p>Pursuant to CAR 602.105, the following procedures are in effect. Noise Abatement pro in effect for all acft. See CAP or VTPC. Pilots flying an inst apch pro to Rwy 26 take note: The pro turn overflies Guelph Aprt (circuit hgt 2100 ASL). Pilots flying an inst apch pro to Rwy 26 can anticipate delays and/or restrictions when Rwy 05 &amp; 06R are in use at Toronto/Lester B. Pearson. IFR tng flts are to ctc National Traffic Management Unit (FLOW CTL) 800-268-4831 2 hrs prior to ETD or possible delays. VFR tfc outside CZ watch for apch acft oprg in vic of extended Rwy 26 centreline. VFR dep avoid noise sensitive areas at an operationally safe alt.</p> <p>Pursuant to CAR 602.105, the following procedures are in effect. Rgt hand circuits Rwy 32 (CAR 602.96).</p> <p>No VFR or IFR tng on Rwy 08 btwn 02-12Z‡</p> <p><b>REDUCED VISIBILITY OPERATING PROCEDURES (RVOP):</b><br/>One acft permitted on manoeuvring area at a time dur RVOP. RVOP avbl 12-04Z‡ only.<br/>For VFR ARR/DEP rtes see Kitchener/Waterloo VTPC.</p> |
| <b>CAUTION</b>  | Winch-launched hang gliders, cable to 2000 AGL N43 33 18 W080 31 31 near St. Jacobs aprx 8.5NM NW of A/D.   |