

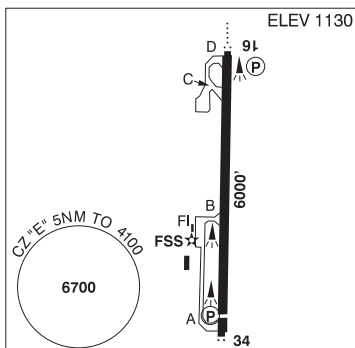
## BRITISH COLUMBIA

## AERODROME/FACILITY DIRECTORY

**PENTICTON BC**

CYYF

<b>REF</b>	N49 27 45 W119 36 08 1.8SW 16°E (2015) UTC-8(7) Elev 1130' A5004 A5005 LO2 HI3 CAP RCAP
<b>OPR</b>	TC APM 250-809-4596 Admin 250-770-4422 1600-0030Z± Mon-Fri exc hols H24 Cert
<b>PF</b>	A-2,3,6,7,8 B-5 C-4
<b>CUST</b>	AOE/30 (120 with staged off-loading) CANPASS 1-888-226-7277 1630-0030Z± Mon-Fri
<b>FLT PLN</b>	<div> <div><b>FIC</b></div> <div>Kamloops 866-WXBRIEF (Toll free within Canada) or 866-541-4101 (Toll free within Canada &amp; USA)</div> </div> <div> <div><b>WX</b></div> <div>METAR H24. TAF H24. issue times: 01, 07, 13, 19Z.</div> </div>



## SERVICES

**FUEL** 100LL, JA-1 14-05Z† Mon-Fri 15-04Z† Sat-Sun  
**OIL** 80, 100, 120, 15W50  
**S** 1,2  
**JASU** CE15 West Jet Encore or Air Canada Express  
**ILCON** Executive Flight Centre Fuel 250-493-5323

## RWY DATA

Rwy 16(165°)/34(345°) 6000x148 ASPH Thld 34 displ 300'.

## RWY CERT

Rwy 16/34 AGN IIIB

## APRON

GA prkg on apron N of tml only. Park on N and NE edges. Non-wheeled heli prkg avbl on grass N of main apron. Itinerant pilot and pax access via Gate 88. Lgt acft prkg avbl off Twy A, S end.

Wildfire Heli Ops: Staging and extended prkg on grass N of tml and maint fac, and S of Air Tanker Base along W fence. PPR required for all prkg - request via [yyf.vortexcms.com/ppr](http://yyf.vortexcms.com/ppr). Prkg fees.

## RCR

Oppr Ltd win maint 15-01Z± Mon-Fri, 17Z± & 23Z± Sat-Sun & hols Nov 1-Mar 31, O/T 2 hr PN call out chg may be levied. CRFI, PLR/PCN

## LIGHTING

16-AO(TE ME) P2, 34-AS(TE ME) P2 PAPI limitation/restriction. PAPI Rwy 34 to be used only within 2NM of thld. ARCAL-118.5 type K avbl when FSS clsd.

## COMM

<b>RADIO</b>	118.5 PTC avbl (V) (emerg only 250-492-3001)
<b>GND ADV</b>	121.9 (emerg only 250-492-3001)
<b>MF</b>	rdo 118.5 5NM 4100 ASL (CAR 602.98)

## NAV

<b>DME</b>	110.3	Ch 40	N49 27 09 W119 36 14 (1134')	reliable only within 10° of centreline
<b>LOC</b>	110.3	(Rwy 16)		reliable only within 10° of centreline

PENTICTON BC (Cont'd)

CYYF

PRO	<p>Inbd tfc see VTPC; for night circuit pro see Night Circuit VTPC. Circuit hgt 2300 ASL. Rgt hand circuits Rwy 34 (CAR 602.96). Heli tng all quadrants, circuits E &amp; W of A/D at 2300 ASL.</p> <p><b>GROUND ADVISORY:</b> The Minister has authorized specific operating restrictions regarding communications intended for the MF, as well as the introduction of a Ground Advisory frequency (GND ADV) pursuant to CARs 602.97(2), 602.98(1) and 602.99.</p> <p><b>Departure procedure:</b> Prior to taxi for departure; contact GND ADV on 121.9 for clearance and initial advisory information. After receiving initial advisory information, GND ADV will initiate communication transfer to RADIO on 118.5 prior to entering the runway/departure surface. Pilots are required to ascertain that there is no likelihood of collision with another aircraft or a vehicle prior to departure as stated in CAR 602.96 2a) and b).</p> <p><b>Arrival procedure:</b> After exiting the runway/arrival surface and reporting clear on the radio frequency, pilots will be directed to contact GND ADV on 121.9 for ground traffic and taxiing information before entering the taxiway.</p>
CAUTION	<p>Only pilots familiar with local terrain should use this aprt dur hrs of darkness. Ngt ops not recommended unless all 7 hazard beacons oprg. Extv heli activity at A/D dur daylight hrs all quads. Due to high terrain, it is recommended pilots proceeding E or W under VFR, attain an alt of 5,000' (ASL) min before leaving the Okanagan Valley. Hi terrain reduces operational length of Rwy 34 PAPI. Extv bird activity in vic.</p>