

CANADA FLIGHT SUPPLEMENT / GPH 205

Effective 0901Z 19 March 2026 to 0901Z 14 May 2026

AERODROME/FACILITY DIRECTORY B681

MINTO YT (Cont'd)

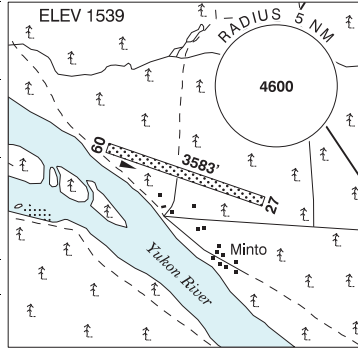
CMN4

COMM	ATF tfc 123.2 5NM 5000 ASL
CAUTION	Blasting ops to 2000 AGL 2NM radius around A/D H24.

MINTO LANDING YT

CML7

REF	N62 35 38 W136 52 27 Adj N 20°E (2017) UTC-7 Elev 1539' A5028
OPR	Govt of Yukon 867-634-2046 or 867-993-7709 Fax 867-634-2131 Reg
FLT PLN	FIG Kamloops 866-WXBRIEF (Toll free within Canada) or 866-541-4101 (Toll free within Canada & USA)
SERVICES	Fuel stor by permit only ctc opr
RWY DATA	Rwy 09(089°)/27(269°) 3583x100 GRASS/GRVL
COMM	ATF tfc 123.2 5NM 4600 ASL
PRO	Opr No win maint

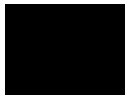
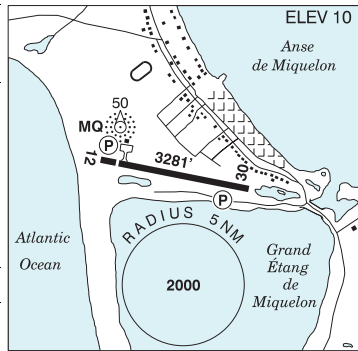


MINTY FIELD AB — See DIDSBURY / MINTY FIELD

MIQUELON FRANCE

LFVM

REF	N47 05 05 W56 23 04 Adj SW 18°W (2020) UTC-3(2) Elév 10' A5012 LO8
OPR	DTAM TWR St-Pierre tel 0-11-508-41-18-22 ATS O/R for commercial flights, MEDEVAC & SAR. All other flights PPR 1 day before 1800Z. All comm in French. English comm avbl PPR. Tel (Canada 0-11-508-55-64-60 Fax 0-11-508-41-64-60)
PF	A-1 C-2,3,4,5
CUST	Not avbl at this site. All Intl tfc must first clear cust at St-Pierre.
FLT PLN	Flt Pln & NOTAM avbl fr St-Pierre TWR Tel 0-11-508-41-18-22 Fax 0-11-508-41-18-20
FIG	London 866-541-4104 (English)
SERVICES	ARFF CAT 2 (CAT 3 PPR)
RWY DATA	Rwy 12(116°)/30(296°) 3281x66 ASPH Thld 12 displ 361' RCR Opr Aprt TWR tel 0-11-508-41-64-60
LIGHTING	12-(TE HI) P1, 30-(TE HI) P1 3.5°



CANADA FLIGHT SUPPLEMENT / GPH 205

Effective 0901Z 19 March 2026 to 0901Z 14 May 2026

B682 AERODROME/FACILITY DIRECTORY

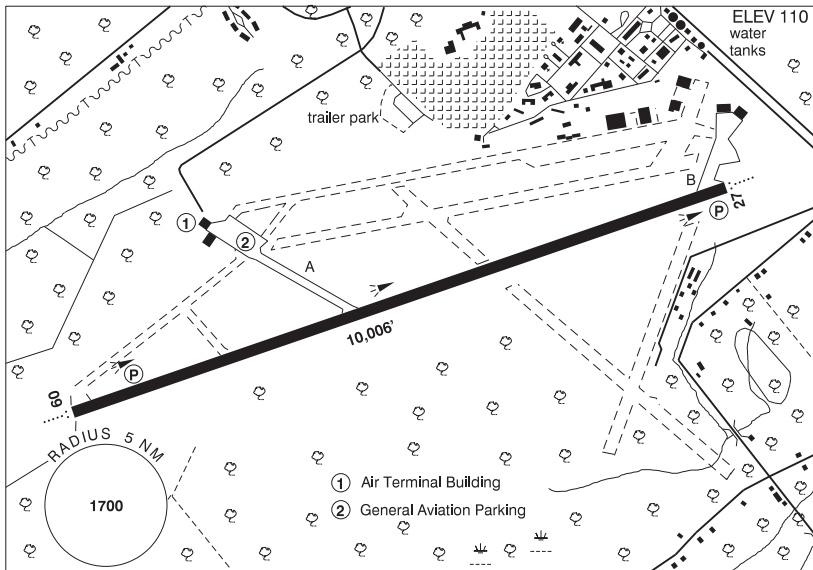
MIQUELON FRANCE (Cont'd)

LFVM

COMM	
TWR	Miquelon Info 118.275
ATF	tfc 119.1 5NM 6000 ASL
TML	St-Pierre 119.1 11-22Z± O/T Gander Ctr 134.9
PAL	Gander Ctr 134.9
NAV	
NDB	MQ 402 (L) N47 05 51 W56 23 09 at A/D
PRO	
	Rgt hand circuits Rwy 12.
CAUTION	
	Presence of sea birds year round. Site is likely to be covered by advection fog in a few minutes.

MIRAMICHI NB

CYCH



REF	N47 00 21 W65 27 25 1.6S 18°W (2017) UTC-4(3) Elev 110' A5003 LO8 HI6 CAP
OPR	Miramichi Aprt Comsn 506-778-1031/9189 Reg
PF	A-1 (ltd hrs) C-2,3,4,5,6
FLT PLN	
FIC	London 866-WXBRIEF (Toll free within Canada) or 866-541-4104 (Toll free within Canada & USA)
ACC	(IFR only) Moncton 506-867-7177 or 866-480-8200.
WX	ALTIMETER/WIND 506-778-1031 11-23Z± (see COMM) WxCam
SERVICES	
FUEL	Call out chg may be levied for one or more svcs
S	100LL, JA-1
SUP FL	1,2,4,5,6
JASU	D-ice PN
MILCON	10/15 PN
	Miramichi Airport Commission (Irving Oil) 506-778-1031