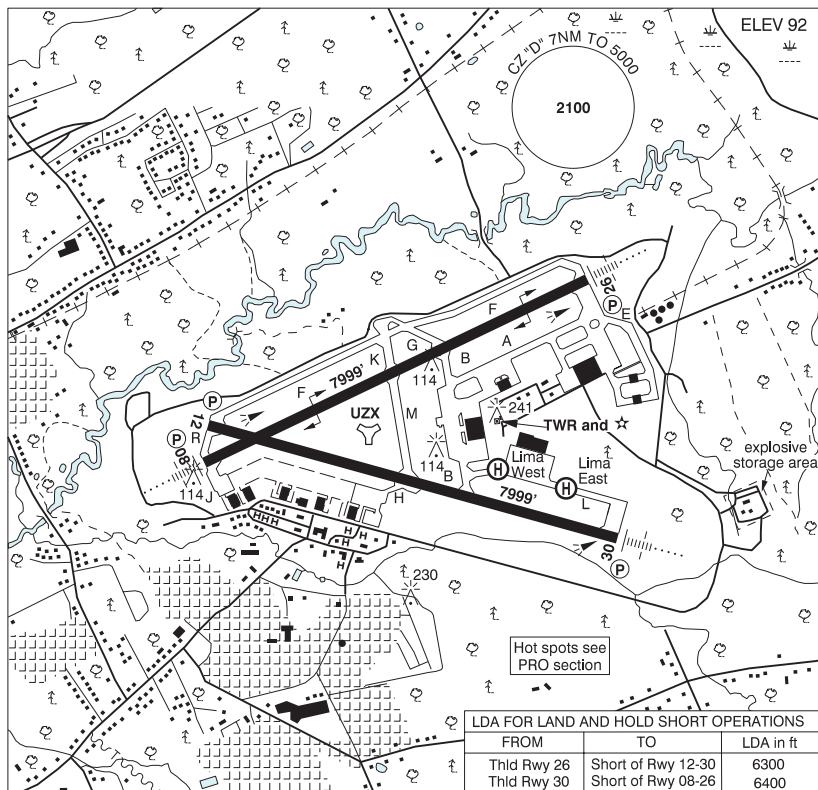


GREENWOOD NS

CYXZ



REF	N44 59 03 W64 55 03 1.5E 17°W (2022) UTC-4(3) Elev 92' A5003 L08 H16 CAP
OPR	DND PPR rqrd for non CF acft, 24 hrs PN thru Wg Ops, 902-765-1494 Ext 5457 CSN 319-568-5457/5469 Mil Fax DND 902-765-5492, CSN 319-568-5492 Ldg & hdg Fees
PF	B-1 D-2,3,4,5,6
CUST	AOE/M Ctc Wg Ops for forms & further info rqrd duty-ops-officer@forces.gc.ca PN Mandatory. Completed cust forms must be rcvd by Wg Ops min 4 hrs prior to arr.
FLT PLN	<p>FIG London 866-WXBRIEF (Toll free within Canada) or 866-541-4104 (Toll free within Canada & USA)</p> <p>ACC (IFR only) Moncton 506-867-7177 or 866-480-8200.</p> <p>MIL 902-765-1494 Ext 5457</p> <p>WX Met brief for mil only. Lcl Met Section CSN 568-3249 ltd hrs. O/T JMC 1-800-WXMETEO (996-3836) or CSN 432-2613. (See COMM). METAR H24. TAF dur mil fit ops, issue times depending on mil requirements.</p>

NOVA SCOTIA

AERODROME / FACILITY DIRECTORY

GREENWOOD NS (Cont'd)

CYZX

SERVICES	PPR rqrd for non CF acft, 24 hr PN for all acft thru Wg Ops. 902-765-1494 Ext 5457 or CSN 319-568-5457/5469. Tran svcg very ltd (mil acft only). F-34
FUEL	All 128, 148, 156 ltd supply
OIL	CAT 6
ARFF	LHOX, LOX, D-Ice PRESAIR, D-Ice Type I & IV avail 0900-0200Z if prior arng thru Wg Ops duty-ops-officer@forces.gc.ca Min 2 hrs notice rqrd.
SUP FL	CE12, 13, 16 MA-1A
JASU	Greenwood Wg Ops 308.6 all mil acft advs ramp time, requirements 20 min prior ldg. Acft requiring gnd wash fac advise line servicing freq 308.6 dur taxi. Tusker Ops 129.775 1130-20Z† Mon-Fri exc hol. Eagle ops 308.6 11-20Z† Mon-Fri exc hol.
MIL ADV	
RWY DATA	Rwy 08(081°)/26(261°) 7999x200 grooved ASPH Rwy 12(122°)/30(302°) 7999x200 ASPH RAG: Rwy 08 BAK 12/14 smart arrest retractable arrestor system (2739'); Rwy 26 BAK 12/14 smart arrest retractable arrestor system (1473'). All acft requiring cable 1 hr PN CSN 319-568-5457, 902-765-1494 Ext 5457. ABV 15°C, no acft with more than 100 pax or over 85,000 lbs is auth to perform 180° turn on asphalt portions of Rwy 08/26 without perms 902-765-1494 ext 3205.
RCR	Opr CRFI Expect water on E half of Rwy 08/26 dur rain or melting snow. S100, T200, ST248, TT325. Rwy 08/26 PCN 120/F/A/X/T. Rwy 12/30 PCN 120/F/A/X/T.
HELI DATA	Lima West: 98' x 98' ASPH 100,000 lbs. Lima East: 98' x 98' ASPH 100,000 lbs
LIGHTING	08-AN (non-std 3000' (1600' SF)) (TE HI) P2 rgt side only GPI 954' TCH 50', 12-(TE HI) P2 left side only GPI 954' TCH 50', 26-AN (non-std 3000' (1600' SF)) (TE HI) P2 GPI 1000' TCH 52', 30-AN (non-std 3000' (1600' SF)) (TE HI) P2 3.5° GPI 895' TCH 55'
COMM	Flight Advisory hrs of operation dates & hrs may vary and will be broadcasted on ATIS.
ATIS	128.85 244.3 11-24Z†
CLNC DEL	128.025 283.9
GND	133.75 289.4
TWR	119.5 236.6 324.3 (E)
TML	120.6 335.9 (E)
PMSV	344.6 ltd hrs
NAV	
NDB	YZX 266 (M) N44 55 22 W65 06 07 AYLESFORD GF 341 (L) N45 01 26 W64 48 37
TACAN	UZX 117.6 Ch 123 N44 59 00 W64 55 11 (117') Preventive maint first Wed every month 12-20Z†.
ILS	IZX 110.7 (Rwy 26) (LOC back course Rwy 08 avail mil use only) RVR. Preventive maint second Wed every month 12-20Z†.
PAR	118.1 258.6 283.9 378.5 (E) 12-24Z† Radar svcs only avbl to transponder equipped acft. Preventive maint third Wed every month 12-20Z†.

NOVA SCOTIA

AERODROME / FACILITY DIRECTORY

GREENWOOD NS (Cont'd)

CYZX

PRO	<p>Tfc Ptns; convl 1500 ASL exc lgt acft 1100 ASL (Daylight hrs only), Jet 2000 ASL overhead breaks-away fr the TWR for all rwys, max 300 kt at initial. Glider activity to 3000 A/D north to Hwy 101. Moderate to severe turbulence & wind shear may be experienced to apch to Rwy 12 & 30 dur cond of high sfc winds. Unmarked fur farm lctd N44 51 24 W65 10 18 (UZX 252R/13.1 DME), elev 580 ASL. Acft requested to remain outside 2NM and/or overfly min 2000 ASL.</p> <p>CYZX Radar Square Pro (issued by ATC as a dep or missed apch clnc) Square 08 - Climb 3000, clnc limit XESOX, after completion of the dep or published missed apch RWY 08, LEFT Turn Hdg 360° expect vectors. Square 26 - Climb 3000, clnc limit GOXID, after completion of the dep or published missed apch RWY 26, RIGHT Turn Hdg 360° expect vectors. Square 12 - Climb 3000, clnc limit KEPKA, after completion of the dep or published missed apch RWY 12, RIGHT turn Hdg 180° expect vectors. Square 30 - Climb 3000, clnc limit ILEVU, after completion of the dep or published missed apch RWY 30, LEFT turn Hdg 180° expect vectors.</p> <p>Pilots are advised to listen to CYZX ATIS prior to contacting CYZX Twr for status of Twr / Advsy svcs. Pilots should refer to Canadian Airport Charts (CAC) to obtain details on established hot spots, prior to operating on maneuvering areas. CAC are available for free on the NAV CANADA website. 1500 AGL min overflight over explosive storage area E of A/D.</p>
NOISE ABATEMENT	<p>Arr Rwy 12 rstd unless operationally necessary. Dep/low apch Rwy 30 rstd for high performance acft unless operationally necessary. Pilots must obtain start clnc from twr/gnd ctl before commencing engine start.</p>
CAUTION	<p>Painted & lgted twr 895 ASL (325 AGL) 2.7NM S; loc in VFR tfc ptn of Rwy 30. During periods of hvy rain, Twy Foxtrot west of Kilo south of centerline and Rwy 08/26 on both side of centerline experience excessive pooling. Pooling areas are as deep as 1/4 inch. Extensive bird activity direction S to N dawn / N to S dusk, on western half of A/D, Oct-Mar.</p>