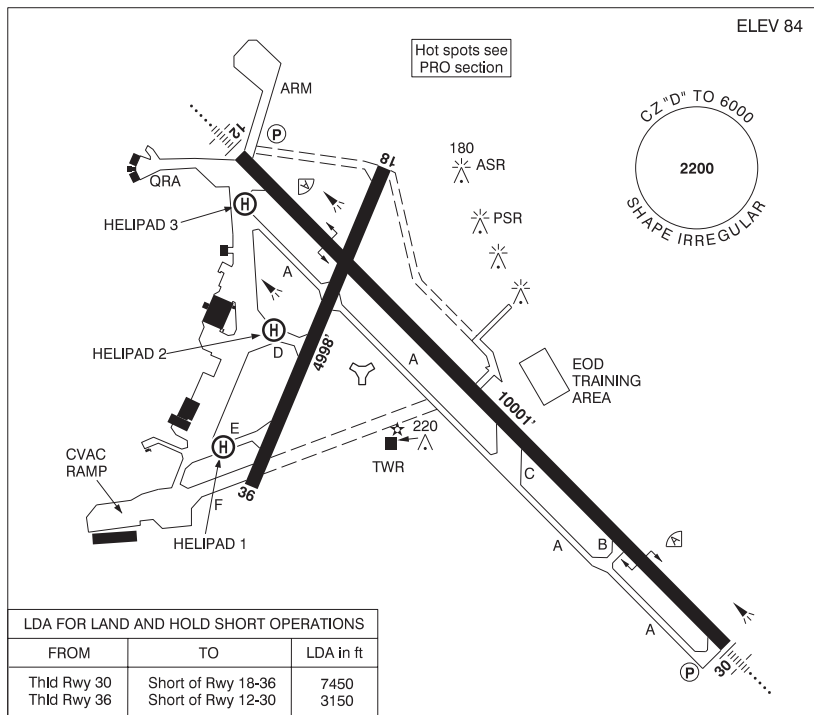


**BRITISH COLUMBIA**

**AERODROME / FACILITY DIRECTORY**

**COMOX BC**

**CYQQ**



<b>REF</b>	N49 42 39 W124 53 12 2.5NNE 16°E (2022) UTC-8(7) Elev 84' A5004 LO2 HI3 CAP RCAP
<b>OPR</b>	DND 250-339-8231 CSN 319-252-8231 NTAS 334-8231 Mil PPR
<b>PF</b>	B-1 C-2,3,5,6
<b>CUST</b>	AOE/15 PN civ 888-226-7277 Mil 250-334-3424 fr 1630Z† to 0030Z† Mon to Fri exc hols; AOE/CAN.
<b>FLT PLN</b>	<p><b>FIG</b> Kamloops 866-WXBRIEF (Toll free within Canada) or 866-541-4101 (Toll free within Canada &amp; USA)</p> <p><b>MIL</b> 250-339-8211 Ext 8770 CSN 319-252-8770 Fax 250-339-8230, CSN 319-252-8230</p> <p><b>WX</b> METAR H24. TAF H24, issue times: 00, 06, 12 &amp; 18Z. Met brief for mil only. Lcl Met Section CSN 252-8242/8460. O/T JMC 1-800-WXMETEO (996-3836) or CSN 432-2613. (See COMM).</p>

## BRITISH COLUMBIA

## AERODROME / FACILITY DIRECTORY

## COMOX BC (Cont'd)

CYQQ

<b>SERVICES</b>	MIL: All trans acft require PPR thru 19 Wg Ops CSN 319-252-8288/8223 NTAS 250-339-8288/8223. Trans svcg 07-22 hrs incl Mon-Fri exc hols, O/T by special arng. NOVA/Flight Advsy msg rqrd & may be faxed to CSN 319-252-8129 NTAS 250-339-8129. CIV: All civ reg acft rqrd ramp authorization thru civ ops mgr 250-207-1658 prior to PPR req thru Wg Ops 250-339-8231/8288. For MEDEVAC btw 06-23 hrs (local) call civ ops mgr 250-207-1658, btw 23-06 hrs (local) call Wg Ops 250-339-8231/8288, PPR not rqrd. Ltd prkg civ ramp, 24 hrs PN. Ltd overnight prkg on civ ramp.
<b>FUEL</b>	F-34, F-37, SP, HPR
<b>OIL</b>	128, 133, 148, 156, SOAP
<b>ARFF</b>	CAT 6
<b>SUP FL</b>	LHOX, LOX
<b>JASU</b>	CE12, 13, 15, 16, CA2, CEA1, MC-11
<b>PVT ADV</b>	Shell 250-207-1658 07-19 (Local) O/T call out chg
<b>MIL ADV</b>	Call Wg Ops for tran svcg CSN 319-252-8288/8223 NTAS 334-8288/8223.
<b>RWY DATA</b>	Rwy 12(119°)/30(299°) 10001x200 CONC Rwy 18(186°)/36(006°) 4998x200 ASPH RAG: Rwy 12 BAK 12/14 smart arrest retractable arrestor system (1697'); Rwy 30 BAK 12/14 smart arrest retractable arrestor system (1495'). Rwy 12 RVR 1200(1/4sm)/Rwy 30 RVR 1200(1/4sm) Do not taxi thru Gnd Wash Fac SW corner twy D. Opr CRFI S65, T155, ST192, TT240. Rwy 12/30 PCN 54/R/A/W/T. Rwy 18/36 PCN 80/F/A/W/T. Caution - Rwy 18/36 - Rise at intxn of Rwy 12/30 approx 5 inch (14 cm) over 100 ft (31 m).
<b>RWY CERT</b>	
<b>TWY</b>	
<b>RCR</b>	
<b>HELI DATA</b>	Helipad 1 and 2: 100' x 100' ASPH. Helipad 3: 100' x 100' CONC.
<b>LIGHTING</b>	12-AN (non-std 3000' (1600' SF)) (TE HI) P2 GPI 1164' TCH61', 18-(TE HI), 30-AN (non-std 3000' (1600' SF)) (TE HI) P2 GPI 1157' TCH55', 36-(TE HI). Helipad 1, 2 and 3 not lgtd.
<b>COMM</b>	Flight Advisory hrs of operation dates & hrs may vary and will be broadcasted on ATIS.
<b>ATIS</b>	118.6 282.2
<b>CLNC DEL</b>	127.0 227.6
<b>GND</b>	119.75 250.3
<b>TWR</b>	126.2 358.1 236.6x (E)
<b>TML</b>	123.7 227.6 (opr svcs only 250-339-8115)
<b>ARR</b>	123.7 128.1x 134.1x 227.6 289.4x 335.9x 342.9x 378.5x 384.5x
<b>DEP</b>	123.7 227.6
<b>MIL</b>	442 Sqn - call Snake Ops 135.9 363.0; 407 Sqn VP & VS A/C- call Demon Ops 308.6; Base Ops 316.5
<b>NAV</b>	
<b>TACAN</b>	UQQ 110.4 Ch 41 N49 42 45 W124 53 40 (78') Maint 1st & 3rd Thu each month; 16-20Z‡, dur VFR.
<b>ILS</b>	IQQ 111.7 (Rwy 12) RVR. ICX 109.75 (Rwy 30) RVR. Maint 2nd Thu each month; 16-20Z‡.

## BRITISH COLUMBIA

## AERODROME / FACILITY DIRECTORY

## COMOX BC (Cont'd)

CYQQ

<b>PRO</b>	<p>Rgt hand circuits Rwy 30 &amp; 36 (CAR 602.96). Tfc ptns Heli 500 ASL, convl 1000 ASL, Jet 1500 ASL. Reporting points &amp; rtes, as depicted on VTPC, used proceeding to/fr aprt or transiting the Class "D" CZ. Ctc Twr at least 5NM prior to entry.</p> <p>All acft and helis avoid flt over Courtenay Airpark below 2000' ASL.</p> <p>All mil acft shall ctc Comox grd prior to engine start.</p> <p>Extv glider activity 3NM radius of the aprt, max alt 3500 ASL, Jun to Aug.</p> <p>All mil/civ transient acft requesting approaches require PPR thru Wg Ops CSN 319-252-8288/8223 NTAS 250-339-8288/8223.</p> <p>In VFR cond all IFR &amp; VFR acft on overshoot or dep, not to exceed 1000 ASL until dep end of rwy in use.</p> <p>PSR/SSR maint every Mon; 1830-2359 lcl, dur VFR, hol altn Tue.</p> <p>Pilots should refer to Canadian Airport Charts (CAC) to obtain details on established hot spots, prior to operating on maneuvering areas. CAC are available for free on the NAV CANADA website.</p>
<b>CAUTION</b>	<p>Bump at the main intxn. Parachuting to 12,500 ASL on A/D, Monitor CYQQ ATIS freq 118.6 for info. Confusion point due to airfield layout &amp; non-standard hold lines located at the intersection of twy A, Helipad 3, West Ramp, QRA &amp; rwy 12/30</p>