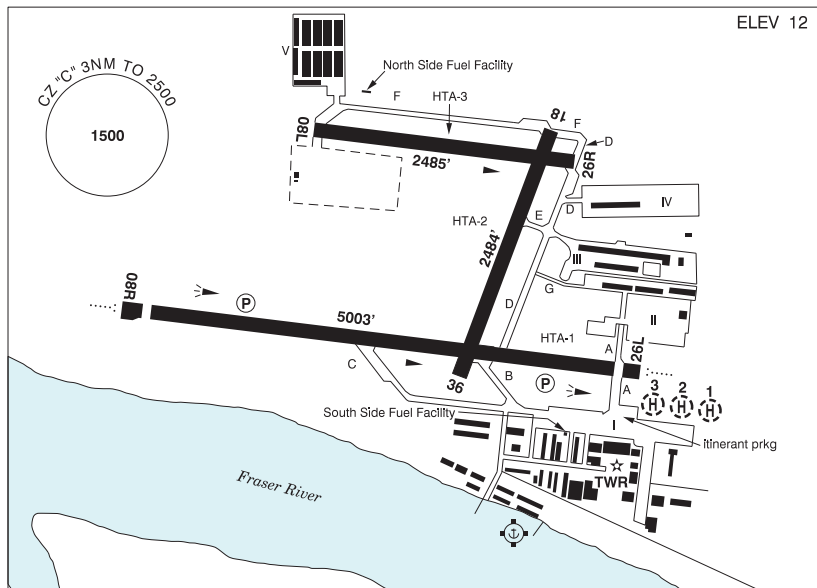


PITT MEADOWS BC

CYPK



REF	N49 12 58 W122 42 48 1SW 17°E (2013) UTC-8(7) Elev 12' VTA A5004 LO2 T1 CAP
OPR	Pitt Meadows Aprt Society 604-465-8977 1630-0030Z‡ Mon-Fri Cert
PF	A-1,2,3,7 C-4,5,6
CUST	AOE/15 888-226-7277
FLT PLN	<p>FIG Kamloops 866-WXBRIEF (Toll free within Canada) or 866-541-4101 (Toll free within Canada & USA)</p> <p>ACC Vancouver IFR 604-586-4590/4591; IFR tng flts PPR ctc 604-586-4592</p> <p>WX LWIS H24 LAWO 15-07Z‡</p>
SERVICES	<p>FUEL 100LL (Cardlock) Helis not auth South Side Fuel Facility unless dollied, JA-1 (FSII avbl) (by truck)</p> <p>OIL All</p> <p>S 1,2,3,4,5</p> <p>PVT ADV Integrity Flight Support (JA-1 by truck, Oil) 123.35 778-808-3312 1530-0100Z‡ Mon-Fri exc hols, O/T call out chg; Aeroclub of BC (100LL Cardlock) N & S Side Fuel Facilities 604-465-0446.</p>

BRITISH COLUMBIA

AERODROME / FACILITY DIRECTORY

PITT MEADOWS BC (Cont'd)

CYPK

RWY DATA	Rwy 08R(080°)/26L(260°) 5003x100 ASPH Thld 08R displ 197' Thld 26L displ 164' Rwy 08L(080°)/26R(260°) 2485x75 ASPH Rwy 18(185°)/36(005°) 2484x75 ASPH RESA: 08R/26L 492'
RWY CERT	Rwy 08R/26L AGN IIIA Rwy 08L/26R AGN I Rwy 18/36 AGN I
TWY CERT	Twy: D, E, F, G AGN I
APRON	Apron I Itinerant prkg N of ATB, E of Twy A (see sketch). Apron III and V Pvt.
RCR	Twr 604-465-9723 PCN Rwy 08L/26R no win maint
HELI DATA	Parking Pad 1 & 2: TLOF 68' dia ASPH Max heli overall length 57'. Parking Pad 3: TLOF 50' dia ASPH Max heli overall length 42'.
LIGHTING	08R-AO(TE ME) P2, 26L-AO(T ME) P2, 18-(TE ME), 36-(TE ME), 06-14Z‡ O/T ARCAL-126.3 key mic 3 times within 5 sec for 26L, & 5 times within 5 sec for 08R & 7 times within 5 sec for 18-36 for 15 min duration lgt.
COMM	ATIS 125.0 15-07Z‡ GND 123.8 15-07Z‡ TWR Pitt 126.3 (V) 15-07Z‡ (emerg only 604-465-9723) MF tfc 126.3 07-15Z‡ 3NM 2500 ASL (CAR 602.98)
NAV	VOR YPK 112.4 N49 12 57 W122 42 54 (44')

PITT MEADOWS BC (Cont'd)

CYPK

PRO

Rgt hand circuits Rwys 08R, 18 & 26R (CAR 602.96) circuit hgt 1000 ASL. Seaplane circuits 500 ASL on S side of Fraser River. Procedures for crossing the southern Strait of Georgia within Tml Class C airspace refer to Vancouver Intl, VTPC for Crossing the Southern Strait of Georgia.

Due to reduced wing tip clearance, acft total wingspan exceeding 60' are recommended to use Twy A when taxiing to/fr Apron I.

ATS REQUIREMENTS:

All VFR acft arriving, departing or transiting the Vancouver or Victoria Tower Class C or D airspace require a transponder code.

- All acft departing Vancouver or Victoria Intl (including Water Aerodrome) call Kamloops FIC at 866-541-4101 or PAC RDO 122.5 or 123.15 for code assignment at least 30 min prior to flight or file a VFR Flight Plan/Flight Itinerary.

- All acft arriving Vancouver Intl (including Water Aerodrome) or transiting Vancouver or Victoria Control Zones obtain a code from one of the following ATS units:

Vancouver Harbour, Nanaimo, Victoria Harbour, Boundary Bay, Langley, Abbotsford or Pitt Meadows, or call Kamloops FIC at 866-541-4101 or PAC RDO 122.5 or 123.15.

- All acft arriving Victoria Intl from a non NAV CANADA site call Kamloops FIC at 866-541-4101 or PAC RDO 122.5 or 123.15 for code assignment at least 30 minutes prior to flight or file a VFR Flight Plan/Flight Itinerary.

NIGHT RESTRICTIONS:

- Circuit tng Rwy 08R, 08L & 36 not auth 0500-1630Z± Mon-Fri, 05-17Z± Sat-Sun unless approved by APM.

- Circuit tng Rwy 26L, 26R & 18 not auth 06-16Z± unless approved by APM.

- Turbojet, turbofan and turboprop night circuit tng PPR.

- All acft avoid overflight of noise-sensitive areas, unless unable due to crosswind limitations, operational/safety considerations, or as directed by ATC.

When Tower Closed:

- Rwy 08R/18/26L Dep: Acft climb rwy hdg to 1000 ASL BPOC. Best Rate of Climb. Avoid flt over built-up areas in downwind and crosswind legs.

- Rwy 36 Dep: Left hand circuit. When safe turn left to 1000 ASL BPOC. Best Rate of Climb. Avoid flt over built-up areas in downwind and crosswind legs.

- Rwy 08L/26R not to be used when twr is clsd unless rqrd due to operational/safety considerations.

HELI:

All Turbine Heli: Continuous circuits prohibited unless approved by APM.

- Arr/dep: Avoid low flt over built-up areas, unless directed by ATC.

All Apron I arr/dep rqrd to use marked Apron I heli parking pads 1, 2 and 3 unless prior permission received fr APM.

Hover taxiing proh on Apron I BLW adj bldg hgts.

CAUTION

Coyotes in vic of rwys. 160' lit crane 2NM NW of A/D. Quarry blasting ops within 0.6NM radius N49 17 14 W122 39 33 (aprx 4.7NM N of A/D) to 300 AGL. Industrial complex S of 26L apch, do not mistake bldg floodlights for rwy edge lights during low vis conds or ngt ops.