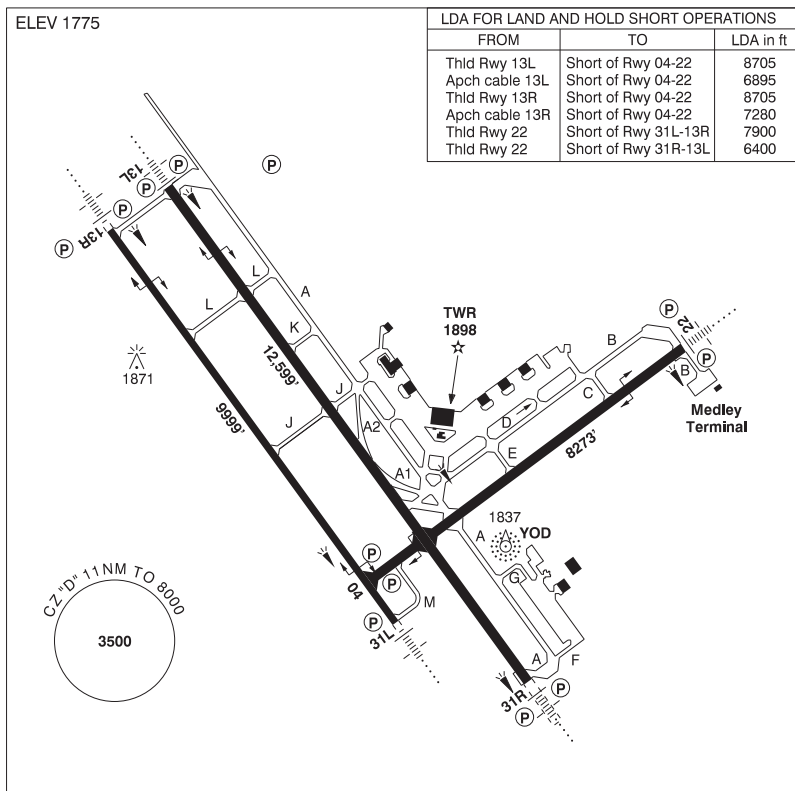


**COLD LAKE / GROUP CAPTAIN R.W. McNAIR AB**

**CYOD**



LDA FOR LAND AND HOLD SHORT OPERATIONS		
FROM	TO	LDA in ft
Thld Rwy 13L	Short of Rwy 04-22	8705
Apch cable 13L	Short of Rwy 04-22	6895
Thld Rwy 13R	Short of Rwy 04-22	8705
Apch cable 13R	Short of Rwy 04-22	7280
Thld Rwy 22	Short of Rwy 31L-13R	7900
Thld Rwy 22	Short of Rwy 31R-13L	6400

<b>REF</b>	N54 24 19 W110 16 56 5.5SW 13°E (2022) UTC-7(6) Elev 1775' A5015 LO1 HI3 CAP
<b>OPR</b>	DND 780-840-8000 NTAS 531-8011 CSN 319-690-8000/8011 Mil PPR
<b>PF</b>	B-1 C-2,3,5,6 D-4
<b>CUST</b>	AOE/M Mil acft and personnel <u>ONLY</u> - Avbl thru Mil Police.
<b>FLT PLN</b>	PPR 24 hr ntc all mil & civ flts ctc 780-840-8000 Ext 8595, CSN 319-690-8595. Flt Pln Ctr must be notified of arr delays in excess of 1 hr.
<b>FIG</b>	Edmonton 866-WXBRIEF (Toll free within Canada) or 866-541-4102 (Toll free within Canada & USA)
<b>ACC</b>	Edmonton IFR 888-358-7526
<b>WX</b>	METAR H24. TAF H24, issue times: 00, 06, 12 & 18Z (plus 15 and 21Z dur mil flt ops). Met brief for mil only. Lcl Met Section CSN 690-7425/8130. O/T JMC 1-800-WXMETEO (996-3836) or CSN 432-2613. (See COMM)

## ALBERTA

## AERODROME / FACILITY DIRECTORY

## COLD LAKE / GROUP CAPTAIN R.W. McNAIR AB (Cont'd)

CYOD

<b>SERVICES</b>	All tran acft require PPR thru 4 Wg Ops 780-840-8000 ext 8595. Mil and Civ tran svcs avbl 06-18 hrs lcl Mon-Fri exc hols. O/T by special arng. Prior coord required for hg space with 4 Wg Ops. Access to Medley Terminal after hours is provided through MP Section 780-840-8000 ext 8180. Acft start & refuelling with aircrew supervision exc for B412. Ltd Mil Type I D-ice. 90 min PN Info 780-840-8000 ext 8595.
<b>FUEL</b>	F-34, SP, HPR
<b>OIL</b>	133, 148, 156
<b>S</b>	1 (ltd),6
<b>ARFF</b>	CAT 5
<b>SUP FL</b>	D-ice mil use only, Type I only, LHOX, LOX
<b>JASU</b>	CE1, 3, 8, 9, 13, 16, CA 1, CEA1
<b>MIL ADV</b>	Tran acft call Wg Ops 30 min prior to ETA on 340.2
<b>RWY DATA</b>	Rwy 13L(131°)/31R(311°) 12,599x200 ASPH Rwy 13R(131°)/31L(311°) 9999x150 ASPH Rwy 04(041°)/22(221°) 8273x200 ASPH RAG: Rwy 13L BAK 12 Mobile Aircraft Arrest System, B, (1700'); Rwy 13R/31L BAK 12 Smart Arrest System, B, (1360'); Rwy 04 BAK 12 Smart Arrest System, B, (1305'); Rwy 22 BAK 12 Smart Arrest System, B, (1460')
<b>RCR</b>	Opr CRFI Medley Tml ramp wt ltd. S100, T200, ST248, TT325. Rwy 13L/31R PCN 99/F/D/X/T. Rwy 13R/31L PCN 100/R/A/X/T. Rwy 04/22 PCN 77/F/D/X/U.
<b>LIGHTING</b>	04-(TE HI) P2, 13L-AN (non-std 3000' (1600' SF)) (TE HI) P2 GPI 879' TCH 46', 13R-AN (non-std 3000' (1600' SF)) (TE HI) P2 GPI 850' TCH 44', 22-AN (non-std 2200' (800 SF)) (TE HI) P2 GPI 850' TCH 44', 31L-AN (non-std 3000' (1600' SF)) (TE HI) P2 GPI 850' TCH 44' (Wing bar left side only), 31R-AN (non-std 3000' (1600' SF)) (TE HI) P2 GPI 850' TCH 44'
<b>COMM</b>	Flight Advisory hrs of operation dates & hrs may vary and will be broadcasted on ATIS.
<b>ATIS</b>	118.25 260.0
<b>CLNC DEL</b>	120.6 230.6
<b>GND</b>	121.9 275.8
<b>TWR</b>	126.2 226.5 236.6 255.7 (E) ltd hrs. O/T Cold Lake advsy 126.2 (E)
<b>TML</b>	124.5 322.8 (E)
<b>ARR</b>	119.4x 120.6x 124.5x 128.2x 134.1x 269.6x 279.8x 294.6x 324.3x 336.0x 350.5x 378.5x (E)
<b>DEP</b>	124.5x 322.8 (U)
<b>MIL</b>	Wg Ops 340.2 Tran svcs 308.7
<b>PMSV</b>	344.6
<b>NAV</b>	
<b>NDB</b>	YOD 398 (L) N54 23 49 W110 16 18 Preventive maint 20-23Z± Wed if required
<b>TACAN</b>	UOD 113.5 Ch 82 N54 24 31 W110 17 45 (1806') Preventive maint 01-07Z± first and third Fri of each month.
<b>ILS</b>	IOD 109.3 (Rwy 31R) (LOC back course Rwy 13L avail mil use only) RVR. Preventive maint 01-07Z± first and third Fri of each month.
<b>PAR</b>	119.4x 120.6x 124.5x 128.2x 134.1x 269.6x 279.8x 294.6x 324.3x 336.0x 350.5x 378.5x (E) 14-06Z± Mon-Fri, clsd Sat/Sun & Hol, hrs may vary without notice. PAR preventive maint 01-07Z± Wed dur VFR hol altn Thu. PSR & SSR preventive maint 01-07Z± Tue dur VFR hol altn Wed.

## ALBERTA

## AERODROME / FACILITY DIRECTORY

## COLD LAKE / GROUP CAPTAIN R.W. McNAIR AB (Cont'd)

CYOD

<b>PRO</b>	<p>-Tfc ptns convl 2500 ASL, Jet 3200 ASL</p> <p>-Jet acft in circuit maintain 3200 ASL til commencing base turn.</p> <p>-For straight-in apch (jet acft), maintain 3000 ASL as long as practicable before commencing final descent.</p> <p>-When Rwy 13 in use, remain on or above PAR or PAPI GP to the extent practicable. Consistent with safety of ops, acft should be flown on apch so as to give best possible performance with noise abatement.</p> <p>-In VMC, VFR &amp; IFR acft on dep, overshoot, or missed approach shall not exceed 2500 ASL til dep end of rwy.</p> <p>Noise Abatement Pro: Wkd 0400-1330Z†, Wknds fr Fri 0400Z† to Mon 1330Z† &amp; hol All day. Fixed wing jet acft - straight in VFR or IFR recovery only, no overhead breaks (unless prior appr from Wg Ops), rotary wing acft recover via the W, S or SE only.</p>
<b>CAUTION</b>	<p>Model rocket firing at N54 26 43 W110 12 01 (UOD 033/3.5) &amp; N54 19 04 W110 08 20 (UOD 122/7) 1500 AGL ocsl, voice advsy fr twr. Large acft only: twy intxns A1-A &amp; A2-A involve sharp turns of greater than 135 degrees.</p>