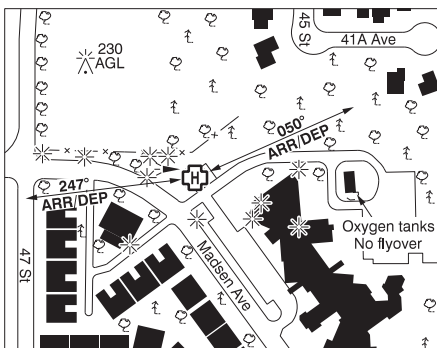
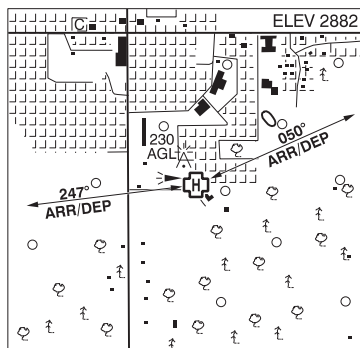


DRAYTON VALLEY (HOSP & CARE CENTRE) AB (Heli)

CFV9



REF	N53 12 44 W114 58 15 16°E (2013) UTC-7(6) Elev 2882' A5014 A5015 CAP
OPR	Alberta Health Services 780-542-5321 Cert NVIS OPS AUTH PPR
PF	C-1,2,3,4,5,6
FLT PLN	
FIC	Edmonton 866-WXBRIEF (Toll free within Canada) or 866-541-4102 (Toll free within Canada & USA)
ACC	Edmonton IFR 888-358-7526
WX	ALTIMETER ltd hrs (see COMM)
HELI DATA	FATO 86' dia non-supporting TLOF 57' dia CONC Safety Area 115' dia Elevated Max heli weight 17,000 lbs, Max heli overall length 57.4' (CAR 602.96)
LIGHTING	RY(LO) PN
COMM	
ATF	UNICOM (AU) ltd hrs O/T tfc 122.8 5NM centered on Drayton Valley Industrial A/D 3.3NM N 5800 ASL
PRO	Arr/dep 050° & 247° fr heli (H1), NVIS rqrd for night use, all flt paths (CAR 602.96)
CAUTION	Antenna twr aprx 366' NW heli 3082 ASL (230 AGL). Lgtd and marked P-lines adj S and W of heli. Lgtd and marked lgt poles 28 AGL E, SE and S of heli.