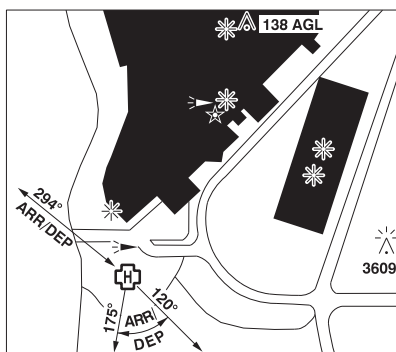
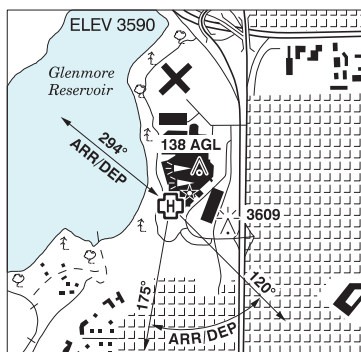


CALGARY (ROCKYVIEW HOSP) AB (Heli)

CEM2



REF	N50 59 18 W114 05 54 15°E (2013) UTC-7(6) Elev 3590' VTA A5005
OPR	Alberta Health Services 403-943-3000 Cert NVIS OPS AUTH PPR
FLT PLN	<p>FIC Edmonton 866-WXBRIEF (Toll free within Canada) or 866-541-4102 (Toll free within Canada & USA)</p> <p>ACC Edmonton IFR 888-358-7526</p>
HELI DATA	FATO/TLOF 86' dia CONC Safety Area 115' dia
LIGHTING	RW(ME) PN
COMM	
VFR ADV	119.4
PRO	Arr/dep 120° to 175° fr heli, slope 16% (H2) and arr/dep 294° fr heli, slope 16% (H2).