

CANADA FLIGHT SUPPLEMENT / GPH 205

Effective 0901Z 15 August 2019 to 0901Z 10 October 2019

B524 AERODROME/FACILITY DIRECTORY

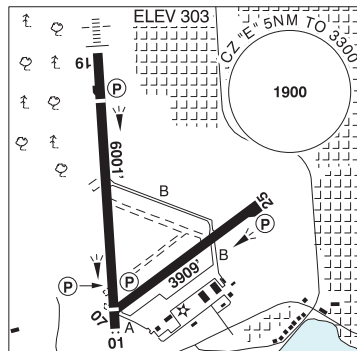
KINGSTON VFR TERMINAL PROCEDURES CHART (Cont'd)

LOCATION	IDENT	LAT/LONG
401-CAT RIVER	VCATR	N44° 16.75 W76° 27.00
BATH GENERATING STATION	VCBTH	N44° 08.50 W76° 50.75
FORT HENRY	VCFHN	N44° 14.00 W76° 27.50
MARYSVILLE	VCMRV	N44° 11.50 W76° 26.50
NAPANEE	VCNAP	N44° 15.00 W76° 57.20
ODESSA	VCODS	N44° 16.75 W76° 43.00
SYDENHAM	VCSDN	N44° 24.50 W76° 35.75
STELLA	VCSTL	N44° 10.20 W76° 42.00

KINGSTON ON

CYBK

REF	N44 13 35 W76 35 48 4.3W 13°W UTC-5(4) Elev 303' A5000 LO6 LO7 HI5 CAP
OPR	City 613-389-6404 Cert Ltd hrs
PF	B-1,2 C-3,4,5,6
CUST	AOE/30 888-226-7277 14-21Z‡ Mon-Fri exc hols
FLT PLN	NOTAM FILE CYBK
FIG	London 866-WXBRIEF (Toll free within Canada) or 866-541-4104 (Toll free within Canada & USA)
WX	METAR 11-04Z‡ O/T LWIS TAF 13-04Z‡; issue times: 13, 20, 02Z (DT 12, 14, 20Z).



SERVICES

FUEL	100LL, JA-1 (FSII avbl)
OIL	65, 80, 100, 120
S	1,2,3,4,5
SUP FL	D-Ice
JASU	CE15
PVT ADV	Central Airways Ltd (World Fuel Services) 123.35 613-389-9300 0930Z-0500Z‡, O/T call out chg Kingston Flying Club 122.8 13-21Z‡ O/T PN 613-389-0954
MIL CON	Central Airways Ltd (World Fuel Services) 613-389-9300

RWY DATA	Rwy 01(009°)/19(189°) 6001x100 ASPH Thld 01 displ 379'. Thld 19 displ 1001' Rwy 07(066°)/25(246°) 3909x100 ASPH RESA: 01/19 492'
-----------------	--

RWY CERT
Rwy 01/19 AGN IIIA
Rwy 07/25 AGN IIIA

APRON Prkg area E of main apron rstd to acct less than 12,500 GTOW.
RCR FSS CRFI/RSC Ltd win maint hrs Mon-Fri exc hols O/T 3 hrs PN. Fees will be levied. PLR

LIGHTING	01-AS(TE HI) P2, 19-AW AS(TE HI) P2, 07-(TE ME) AP, 25-(TE ME) AP ARCAL-122.5 type K.
-----------------	--

COMM

RADIO	122.5 (V) 1115-0400Z‡ (emerg only 613-389-7558)
RCO	London rdo 123.55 (FISE) 126.7 (bcst)
ATIS	135.55 1115-0400Z‡
MF	rdo 122.5 1115-0400Z‡ 5NM 3300 ASL (CAR 602.98)
ATF	tfc 122.5 0400-1115Z‡ 5NM 3300 ASL
VDF	122.5 1115-0400Z‡

CANADA FLIGHT SUPPLEMENT / GPH 205

Effective 0901Z 15 August 2019 to 0901Z 10 October 2019

AERODROME/FACILITY DIRECTORY B525

KINGSTON ON (Cont'd)

CYJK

NAV	NDB YGK 263 (M) N44 17 49 W76 36 16 Unmonitored when FSS clsd. ILS IGK 111.3 (Rwy 19-01) Unmonitored when FSS clsd.
PRO	Due to rwy slope on 01/19 acft on rwy ends may not be vis to pilots at opposite ends of rwy. VFR tfc outside CZ watch for IFR practice apch acft oprg in vic of Rwy 01/19 extended ctr lines.
CAUTION	Crane 106 AGL (355 ASL) 0.5NM N thld Rwy 19 cont days Apr-Dec. Wildlife frequently on rwys.

KINGSTON (GENERAL HOSP) ON (Heli)

CPJ7

REF	N44 13 20 W76 29 34 Adj 13°W UTC-5(4) Elev 261' A5000	
OPR	General Hosp 613-549-6666 Ext 4142 Cert PPR	
FLT PLN	NOTAM FILE CYJK FIC London 866-WXBRIEF (Toll free within Canada) or 866-541-4104 (Toll free within Canada & USA)	
HELI DATA	86' dia asphalt 114' dia Rstd max heli length 57.5' RCR Opr	
LIGHTING	FL ARCAL-123.2 type J	
COMM	RADIO 122.5 (V) 1115-0400Z± at Kingston A/D 4.5NM W RCO London rdo 123.55 (FISE) 126.7 (bcst) MF/ATF rdo 122.5 1115-04Z± O/T tfc 5NM centred on Kingston land A/D 4.5NM W 3300 ASL (CAR 602.98)	
PRO	Arr/dep btwn 160°-220° fr heli, slope 8% (H3), day/night use. Refer to Kingston VTPC.	