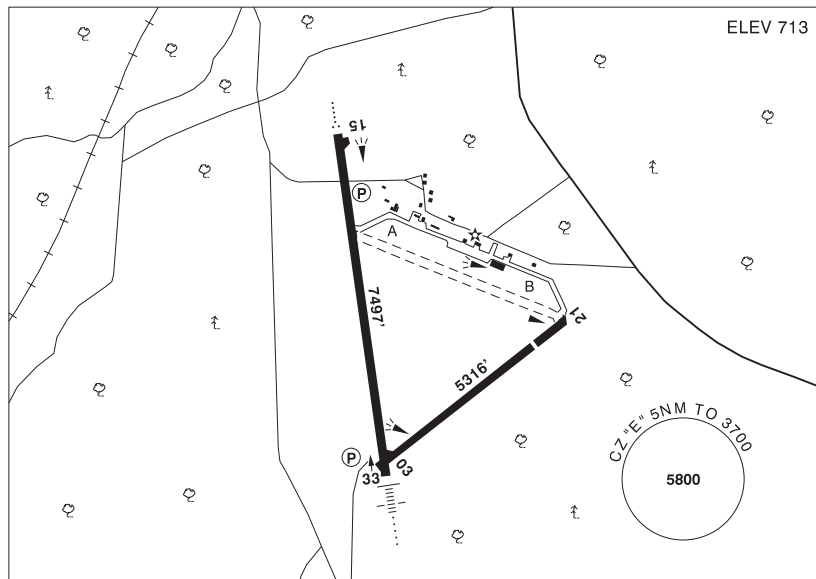


## BRITISH COLUMBIA

## AERODROME / FACILITY DIRECTORY

## TERRACE BC

CYXT



<b>REF</b>	N54 28 07 W128 34 42 3S 19°E (2014) UTC-8(7) Elev 713' A5013 LO1 HI3 CAP
<b>OPR</b>	Terrace-Kitimat Aprt Society 250-635-2659 12-07Z± Cert
<b>PF</b>	A-1,2,3,6,7 C-4,5
<b>FLT PLN</b>	<p><b>FIC</b> Kamloops 866-WXBRIEF (Toll free within Canada) or 866-541-4101 (Toll free within Canada &amp; USA)</p> <p><b>WX</b> METAR H24. TAF H24, issue times: 01, 07, 13, 19Z.</p>
<b>SERVICES</b>	<p><b>FUEL</b> 100LL, JA-1 (FSII avbl) 1230-0400Z±, 250-638-1564, O/T call out chg may be levied.</p> <p><b>OIL</b> All</p> <p><b>S</b> 5 May 01-Oct 31</p> <p><b>ARFF</b> DESIGNATED CAT 6 1330-0740Z± for scheduled commercial acft 20 seats &amp; abv, other acft 2 hr PN 250-615-7636. Call out chg. Executive Flight Centre 250-638-1564 Fax 250-638-1589</p> <p><b>PVT ADV</b> Executive Flight Centre Fuel 250-638-1564</p> <p><b>MILCON</b> Executive Flight Centre Fuel 250-638-1564</p>

## BRITISH COLUMBIA

## AERODROME / FACILITY DIRECTORY

## TERRACE BC (Cont'd)

CYXT

<b>RWY DATA</b>	Rwy 15(153°)/33(333°) 7497x148 ASPH Rwy 03(033°)/21(213°) 5316x148 ASPH Thld 21 displ 797' Rwy 21 down 0.69%
<b>RWY CERT</b>	Rwy 15 RVR 1200(1/4sm) Day only/Rwy 33 RVR 1200(1/4sm) Day only AGN IV Rwy 03/21 AGN IIIA
<b>TWY CERT</b>	Twy: A, B AGN IIIB
<b>TWY</b>	Twy B no vehicle control
<b>APRON</b>	Tran acft must park in SE corner of Apron. Itinerant parking with tiedowns on grass May to Oct. N side main apron stands 1-3 are rstd to sked tfc only. All stands PPR. Itinerant pilot/pax access via pilot access door on E end of tml bldg. No access/egress via tml bldg facility is permitted. Exceptions require prior approval of aprt opr. Corporate itinerant prkg ctc Executive Flight Centre.
<b>RCR</b>	Opr Win maint 1245-0630Z± O/T 2 hrs PN 250-615-7636, cost recovery. Rwy 03/21 no win maint. Ltd hrs CRFI, PCN
<b>LIGHTING</b>	15-AO(TE HI) P2 3.5°, 33-AN(TE HI) P2 3.5° ARCAL-122.0 type K PAPI limitation/restriction. PAPI Rwy 33 to be used only within 2NM of thld.
<b>COMM</b>	
<b>RADIO</b>	122.0 PTC avbl (E) (emerg only 250-635-2110)
<b>RCO</b>	Pacific rdo 123.375(FISE) 126.7 (bcst)
<b>MF</b>	rdo 122.0 5NM 3700 ASL (CAR 602.98)
<b>PAL</b>	Vancouver Ctr 128.4 269.1
<b>NAV</b>	
<b>NDB</b>	XT 332 (M) N54 22 27 W128 35 04 KITIMAT ZKI 203 (M) N54 03 15 W128 40 12
<b>DME</b>	IXT 110.1 Ch 38 N54 27 39 W128 35 16
<b>ILS</b>	IXT 110.1 (Rwy 33)
<b>PRO</b>	Rgt hand circuits Rwy 33 (CAR 602.96). Ngt circuit pro, see VTPC.
<b>CAUTION</b>	Ngt ops not recommended unless all hazard bcns are oprg. Recommend that only pilots familiar with the local area use the aprt dur the hrs of darkness. Hi terrain reduces operational length of Rwy 33 PAPI. Displ thld 21 marked by hi vis barrels.