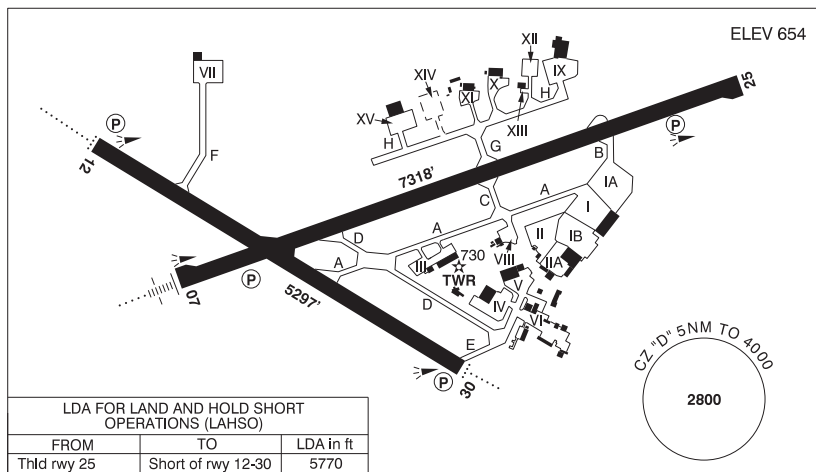


ONTARIO

AERODROME / FACILITY DIRECTORY

THUNDER BAY ON

CYTQ



REF	N48 22 19 W89 19 18 Adj SW 4°W (2014) UTC-5(4) Elev 654' A5001 A5008 LO4 HI4 T2 CAP
OPR	Thunder Bay Intl Apts Authority Inc (TBIAAI) 807-473-2600 H24 Cert Ldg fees
PF	A-1,2,3,6,7 C-4,5
CUST	AOE/40 888-226-7277 13-05Z‡
FLT PLN	Pilots to open/close VFR flt plan with London rdo, FISE or by phone
FIG	London 866-WXBRIEF (Toll free within Canada) or 866-541-4104 (Toll free within Canada & USA)
WX	METAR H24. TAF H24, issue times: 02, 08, 14, 20Z. WxCam
SERVICES	
FUEL	100LL, JA-1 (FSII avbl), HPR 1030-0330Z‡
OIL	All & Turbo 35
S	1,2,3,4,5,6,7
ARFF	DESIGNATED CAT 7 0900-0530Z‡, O/T CAT 5 (CAT 7 1hr PN 807-577-3557)
SUP FL	LHOX
JASU	CE14
PVT ADV	Thunder Bay Flight Refuelling (World Fuel Services) 123.2 1030-0330Z‡ O/T 807-577-1178; SkyFill Aviation Refuelling Inc (Shell) 122.85 0930-0130Z‡ O/T 807-475-5915
MIL CON	SkyFill Aviation Refuelling Inc (Shell) 122.85 807-475-5915

ONTARIO

AERODROME / FACILITY DIRECTORY

THUNDER BAY ON (Cont'd)

CYQT

RWY DATA	Rwy 07(074°)/25(254°) 7318x148 ASPH Rwy 12(125°)/30(305°) 5297x150 ASPH RESA: 07/25 492' RESA: 12 321'; 30 492'
RWY CERT	Rwy 07 RVR 1200(1/4sm)/Rwy 25 RVR 1200(1/4sm) AGN IV Rwy 12 RVR 1200(1/4sm)/Rwy 30 RVR 1200(1/4sm) AGN IIIB
TWY CERT	Twy: A, C, D AGN IIIB
TWY	Twy E (NE of D) uncontrolled. Twy F extends for 225' then changes to apron VII. Private, uncontrolled beyond hold line. Twy H: Private.
APRON	Apron I rstd to sked commercial air carrier by stand assignment only fr TBIAAI. Acft shall not taxi between ATB and pushed back acft. All sked acft shall be directed into prkg posn by Marshalling Services. Taxiing acft to remain on taxilanes. Uncontrolled. Apron II: Itinerant acft prkg. Uncontrolled. Apron III: E entrance ltd to gnd tfc. Aprons III, IV, V, VII, VIII, IX, X, XI, XII, XIII, XV: Private and uncontrolled. Aprons VI: Uncontrolled.
RCR	Opr CRFI, PCN
LIGHTING	07-AN (TE HI) P2, 25-(TE HI) P2, 12-AD AS(TE ME) P2, 30-AD(non-std 1700') AS(TE ME) P2
COMM	
RADIO	118.1 PTC avbl (E) 04-11Z‡ (emerg only 807-473-4311)
RCO	London rdo 122.375 (FISE) 126.7 (bcst)
ATIS	128.8
GND	121.9 11-04Z‡
TWR	118.1 (E) 11-04Z‡ (emerg only 807-473-5252) Admin/Supervisor 807-474-4245
MF	rdo 118.1 04-11Z‡ 5NM 4000 ASL (CAR 602.98)
ARR	Winnipeg Ctr 119.2
DEP	Winnipeg Ctr 119.2
PAL	Winnipeg Ctr 132.125
NAV	
DME	YQT 114.1 Ch 88 N48 15 14 W89 26 15 (1641')
DME	YTV 117.8 Ch 125 N48 22 11 W89 19 48 (676')
ILS	IQT 109.5 (Rwy 07) RVR
PRO	Rgt hand circuits Rws 25 & 30 (CAR 602.96). See CAP for NOISE & NIGHT restrictions. ATS PPR REQUIREMENTS: Ctc Winnipeg ACC 204-984-5979 for the following; - IFR tng and Photo Survey within Thunder Bay Class E Transponder Airspace - VFR tng conducting simulated holds and inst apch VFR TRAINING PROCEDURES - See VTPC
CAUTION	Heli flood lghts 30 AGL N side of apron II. Lgtd obst 746 ASL 0.5NM NE Thld 25 (intxn Thunder Bay Express Way & Arthur street). Terrain rises abruptly to 1600 ASL 2NM SE of A/D. Extv fit tng within 35NM W & N of CYQT CZ to 6000 ASL. Extv bird and wildlife activity in vic of A/D. Railroad tracks SW of A/D in close proximity.