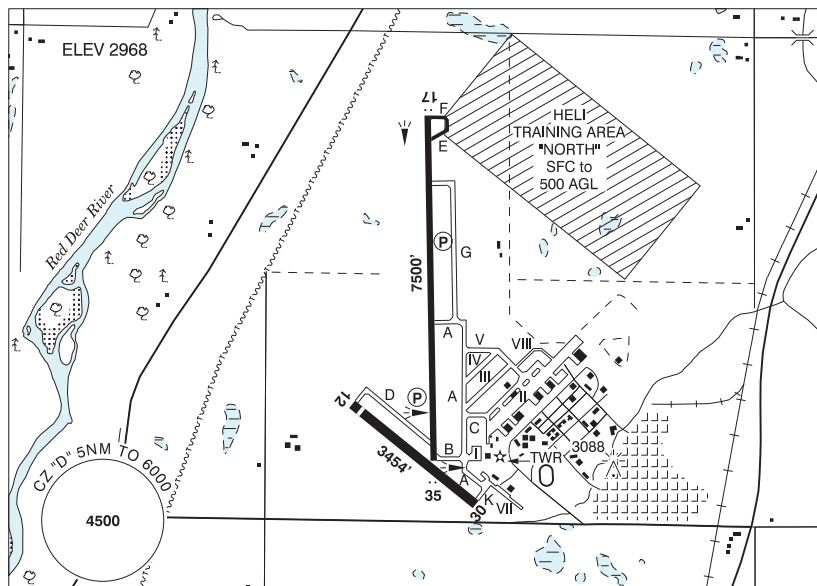


RED DEER REGIONAL AB

CYQF



<b>REF</b>	N52 11 06 W113 53 40 6SSW 14°E (2016) UTC-7(6) Elev 2968' A5005 A5015 LO2 HI3 CAP
<b>OPR</b>	Red Deer Regional Aprt Authority 403-886-4388 Cert Ldg fees
<b>PF</b>	A-1,2,3,7 C-2,3,4,5,6
<b>FLT PLN</b>	<p><b>FIG</b> Edmonton 866-WXBRIEF (Toll free within Canada) or 866-541-4102 (Toll free within Canada &amp; USA)</p> <p><b>ACC</b> Edmonton IFR 888-358-7526</p> <p><b>WX</b> METAR AUTO H24 (see COMM) WxCam TAF H24, issue times: 00, 06, 12, 18Z.</p>
<b>SERVICES</b>	Call out chg may be levied for one or more svcs
<b>FUEL</b>	100LL, JA, JA-1 (FSII avbl) Hillman Air (100LL only, self serve); Sky Wings Avn (Executive Flt Centre) 15-04Z‡; Tucana Avn
<b>OIL</b>	All
<b>S</b>	1,2,3,5 Tucana Avn
<b>SUP FL</b>	D & A-ice 2 hr PN Tucana Avn, LPOX
<b>JASU</b>	10/15
<b>PVT ADV</b>	Hillman Air 403-886-4187; Sky Wings Avn (Executive Flt Centre) 123.4 403-886-5191 15-04Z‡; Tucana Avn 403-596-6320.
<b>MIL CON</b>	Flight Fuels Limited Partnership 403-596-6320
<b>RWY DATA</b>	Rwy 17(165°)/35(345°) 7500x150 ASPH Rwy 12(115°)/30(295°) 3454x100 ASPH Thld 12 displ 200' Rwy 30 up 0.52% RESA: 17/35 492'
<b>RWY CERT</b>	Rwy 17/35 AGN IIIB Rwy 12/30 AGN II
<b>TWY CERT</b>	Twy D AGN II
<b>RCR</b>	Opr CRFI & Win maint 1330-2200Z‡ Mon-Fri exc hols, O/T 2 hrs PN ctc 403-318-7842. Call out charge may be levied.

## ALBERTA

## AERODROME / FACILITY DIRECTORY

## RED DEER REGIONAL AB (Cont'd)

CYQF

<b>LIGHTING</b>	12-(TE ME), 30-(TE ME), 17-AS(TE HI) P2, 35-AS(TE HI) P2 ARCAL-118.5 type K when TWR clsd
<b>COMM</b>	
<b>RCO</b>	Edmonton rdo 123.475 (FISE) 126.7 (bcst)
<b>ATIS</b>	124.0 13-05Z‡
<b>GND</b>	121.9 13-05Z‡
<b>TWR</b>	118.5 (V) 13-05Z‡ (emerg only 403-886-4547)
<b>MF</b>	tfc 118.5 05-13Z‡ 5NM 6000 ASL (CAR 602.98)
<b>PAL</b>	Edmonton Ctr 132.85
<b>AWOS</b>	124.0 05-13Z‡
<b>NAV</b>	
<b>NDB</b>	Red Deer YQF 320 (L) N52 07 42 W113 53 58
<b>DME</b>	Red Deer 6G 113.8 Ch 85 N52 10 52 W113 52 58 (2974') Pvt
<b>PRO</b>	Rgt hand circuits Rwys 12 & 17 (CAR 602.96).
<b>HELI</b>	Use Heli Training Area "NORTH" sfc to 500 AGL.
<b>CAUTION</b>	Wildlife in vic of rwys. Acft at opposite ends of Rwy 17/35 may not be vis to each other. Twy D sfc ruf. Practice IFR approaches in vic Rwy 17/35 extended ctr lines beyond CZ. Extv flt tng within 20NM of A/D, all quadrants to 6500 ASL. Parajumps activity in vic Innisfail A/D 8NM SSW check for NOTAM. Intsv gliding activity to 6400 ASL in vic Olds (Netook) A/D 21NM S by NOTAM. Winch cable may extend from sfc to 5800 ASL (2500 AGL).