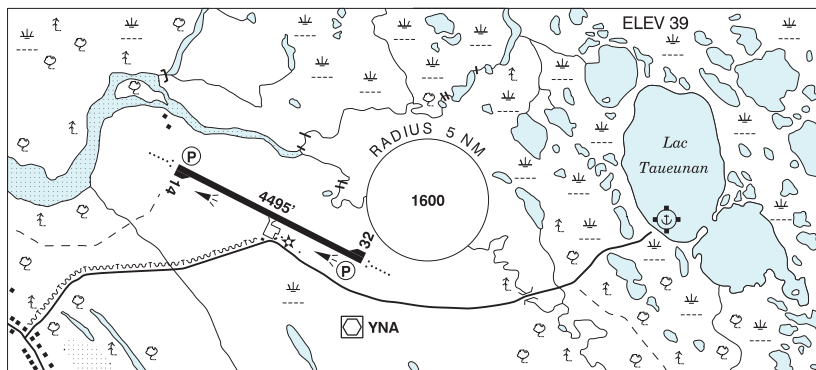


QUEBEC

AERODROME / FACILITY DIRECTORY

NATASHQUAN QC

CYNA



REF	N50 11 24 W61 47 20 Adj NE 18°W (2024) UTC-5(4) Elev 39' A5011 LO7 LO8 H16 CAP
OPR	Municipalité du Canton de Natashquan 418-726-3273/3362 Cert
PF	B-1 C-2,3,4,5
FLT PLN	(bil)
FIC	Québec 866-GOMÉTÉO or 866-WXBRIEF (Toll free within Canada) or 866-541-4105 (Toll free within Canada & USA)
ACC	Montréal 800-633-1353
WX	METAR AUTO H24 (see COMM) TAF H24, issue times: 02, 08, 14, 20Z. WxCam
SERVICES	
FUEL	100LL, JA-1 PN
PVT ADV	Avjet/TSAS PN Mon-Fri 13-22Z± O/T call out chg 418-355-9003
RWY DATA	Rwy 14(136°)/32(316°) 4495x100 ASPH
RWY CERT	Rwy 14/32 AGN IIIA
RCR	Opr 418-726-3273 or 581-622-0059 1230-2130Z± Mon-Fri O/T 3 hrs PN CRFI, PCN
LIGHTING	14-AO(TE ME) P2, 32-AO(TE ME) P2 ARCAL-122.2 type K
COMM	(bil)
RCO	Madeleine rdo 122.2 (RAAS) 13-23Z± Quebec rdo 123.85 (FISE) 126.7 (bcst)
MF	Madeleine rdo 13-23Z± O/T tfc 122.2 15NM 3000 ASL (CAR 602.98) See PRO section
PAL	Montreal Ctr 134.825
AWOS	126.25 (English), 125.3 (French)
NAV	
VOR/DME	NATASH YNA 113.6 Ch 83 N50 11 01 W61 46 51 (63')
PRO	Seaplane activities Aguanus River sector (13NM W of apt). ATF corridor outside MF, see Section C – Areas With Discrete Air-To-Air Frequencies.
CAUTION	Bird activity Aug-Sep.