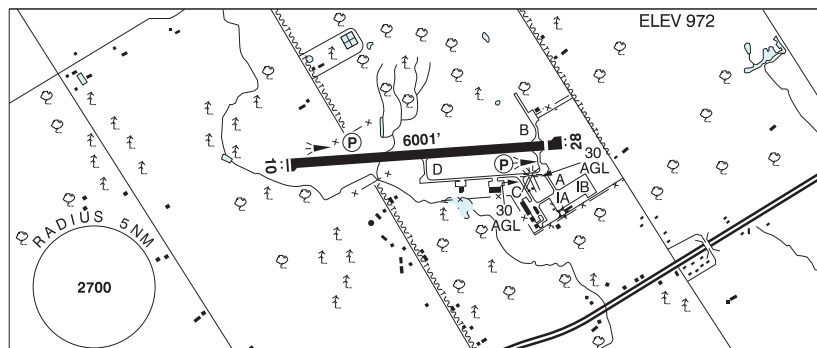


## ONTARIO

## AERODROME / FACILITY DIRECTORY

## BARRIE-ORILLIA / LAKE SIMCOE ON

CYLS



<b>REF</b>	N44 29 10 W79 33 20 2.1NW 11°W UTC-5(4) Elev 972' A5000 LO6 HI5 CAP
<b>OPR</b>	County of Simcoe 705-487-0999 Reg Ldg fees for acct abv 3000 kg max tkof wt.
<b>PF</b>	B-1,2,3,6,7,8 D-4,5
<b>CUST</b>	AOE/24 (cost recovery) 888-226-7277 12-22Z†, Mon-Fri excess of 15 pax 12-02Z†
<b>FLT PLN</b>	
<b>    FIC</b>	London 866-WXBRIEF (Toll free within Canada) or 866-541-4104 (Toll free within Canada & USA)
<b>    WX</b>	AUTO 705-487-6231 (see COMM)
<b>SERVICES</b>	12-02Z† Apr-Oct, 12-24Z† Nov-Mar, O/T call out chg.
<b>    FUEL</b>	100LL Avfuel FBO, JA-1 (FSII avbl) Chartright, SP
<b>    OIL</b>	15W/50, W100
<b>    S</b>	1,2,4,5,6
<b>    SUP FL</b>	D & A-ice Chartright FBO
<b>    JASU</b>	CE16
<b>    PVT ADV</b>	Avfuel FBO 122.7 705-487-0999, Chartright 129.475 905-672-3016
<b>RWY DATA</b>	Rwy 10(097°)/28(277°) 6001x148 ASPH Thld 28 displ 303' Thld 10 displ 43' Rwy 10 first half down 0.8% AGN IIIB
<b>    APRON</b>	Apron IB rstd to 15,000 lbs or less.
<b>    RCR</b>	Opr Win maint 12-02Z†, O/T 3 hrs PN call out chg, PCN.
<b>LIGHTING</b>	10-AS(TE HI) P2, 28-AS(TE HI) P2 ARCAL-122.7 type K AS lgt avbl on ME and HI ints only.
<b>COMM</b>	
<b>    ATF</b>	UNICOM ltd hrs O/T tfc 122.7 5NM 4000 ASL
<b>    AUTO</b>	122.975
<b>NAV</b>	
<b>    DME</b>	MIDLAND YEE 112.8 Ch 75 N44 34 54 W79 47 36 (996')
<b>PRO</b>	Rgt hand circuits Rwy 10 (CAR 602.96).
<b>CAUTION</b>	Twr 3NM NW of A/D 420 AGL, 1634 ASL. Possible win maint eqpt on rwy outside ops hrs. Ocsl wildlife on rwy.