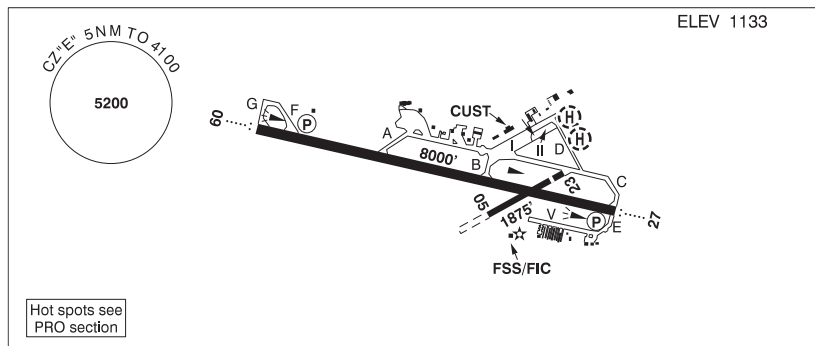


BRITISH COLUMBIA

AERODROME / FACILITY DIRECTORY

KAMLOOPS BC

CYKA



REF	N50 42 09 W120 26 55 5WNW 16°E (2016) UTC-8(7) Elev 1133' A5004 LO2 HI3 CAP RCAP
OPR	Kamloops Aprt Ltd 250-376-3613 Cert
PF	A-1,2,3,6 C-4,5
CUST	AOE/30 1630-0030Z† Mon-Fri exc hols 888-226-7277
FLT PLN	
FIC	Kamloops 866-WXBRIEF (Toll free within Canada) or 866-541-4101 (Toll free within Canada & USA)
WX	METAR H24. TAF H24, issue times: 01, 07, 13, 19Z.
SERVICES	Call out chg may be levied for one or more svcs
FUEL	100LL, JA-1 (FSII avbl)
OIL	80, 100, 120
S	1 (ltd), 2,3,4,5,6 (ltd)
ARFF	DESIGNATED CAT 6 14-08Z†, O/T 2 hr PN 250-376-3233 call out chg
PVT ADV	Shell 123.0 250-376-7633; Executive Flight Centre 122.85 250-376-9069
MIL CON	Executive Flight Centre Fuel 250-376-9069
RWY DATA	Rwy 09(087°)/27(267°) 8000x148 ASPH Rwy 05(045°)/23(225°) 1875x49 ASPH Thld 23 displ 249'.
RWY CERT	Rwy 05/23 AGN I Rwy 09/27 AGN IIIB
TWY CERT	Twy: D, E AGN II
TWY	Twy A, no vehicle ctl first 600' W of Apron I. Twy E: Unlgtd
APRON	Apron 1: Uncontrolled, avbl to sked pax flt only. All acft must yield to acft in pushback from ATB. Prkg fees. Apron II: Uncontrolled, avbl for transient and itinerant prkg. All acft must yield to acft in pushback from ATB. Pilot/pax access via groundside Gate 10 only; no access/egress permitted via ATB. Prkg fees. Apron V: Uncontrolled, PPR for prkg on or within 25' of aprn.
RCR	FSS Win maint 13-08Z† O/T 2 hrs PN cost recovery. CRFI, PCN.
LIGHTING	09-AO(TE ME) P2, 27-AO(TE ME) P2 ARCAL-125.7 type K avbl when FSS clsd PAPI limitation/restriction. PAPI Rwy 09 to be used only within 4NM of thld; PAPI Rwy 27 to be used only within 4NM of thld. Twy D RR.

BRITISH COLUMBIA

AERODROME / FACILITY DIRECTORY

KAMLOOPS BC (Cont'd)

CYKA

COMM	RADIO 125.7 PTC avbl (V) (emerg only 250-376-7941) RCO Pacific rdo 123.375 (FISE) 126.7 (bcst) CLNC DEL 121.9 PTC avbl ltd hrs MF rdo 125.7 5NM 4100 ASL (CAR 602.98) PAL Vancouver Ctr 132.35 133.5 134.4 236.0
NAV	DME IKA 109.3 Ch 30 N50 42 14 W120 27 41 (1136') MT LOLO YKB 117.5 Ch 122 N50 48 03 W120 07 39 (5757') ILS IKA 109.3 (Rwy 09) LOC IPP 109.9 (Rwy 27)
PRO	Pilots should refer to Canadian Airport Charts (CAC) to obtain details on established hot spots, prior to operating on maneuvering areas. CAC are available for free on the NAV CANADA website. Day: rgt hand circuits Rwys 05, 23 & 27 (CAR 602.96). Night: follow VTTC night circuit pro. Tkof and ldg in grass adj rwys by fixed-wing acft not auth.
CAUTION	Migratory bird activity in vic of A/D. Only pilots familiar with lcl terrain should use this aprt dur hrs of darkness. Ngt ops not recommended unless all 6 hazard beacons are oprg. Hi terrain reduces operational length of Rwys 09 and 27 PAPI. Painted & lgtd twr 1253 ASL (128 AGL) aprx 250' beyond Thld 05 and aprox 2710' NW rwy centreline. Fuel facility (tanks 80 AGL) aprx 0.5NM NE A/D; no low alt heli ops.