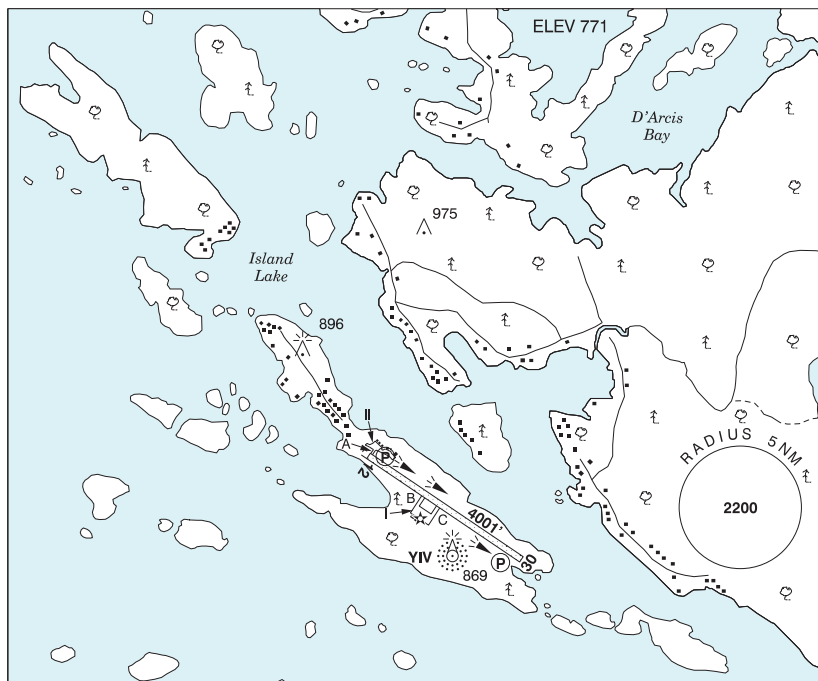


MANITOBA

AERODROME / FACILITY DIRECTORY

ISLAND LAKE MB

CYIV



REF	N53 51 26 W94 39 13 5WNW 0° (2014) UTC-6(5) Elev 771' A5017 LO3 CAP
OPR	Govt of Manitoba 204-945-3421 13-18Z†, 19-22Z† Mon-Fri exc hols O/T MEDEVAC only 1 hr PN 431-668-1211 Cert
PF	A-1 C-2,4,5 Tml bldg opr 13-18Z† & 19-22Z† Mon-Fri, clsd Sat, Sun & hols
FLT PLN	Pilots to open/close VFR flt plan with Edmonton rdo, FISE or by phone.
FIC	Edmonton 866-WXBRIEF (Toll free within Canada) or 866-541-4102 (Toll free within Canada & USA)
WX	METAR AUTO H24 (see COMM). WxCam TAF H24, issue times: 01, 07, 13, 19Z.
RWY DATA	Rwy 12(122°)/30(302°) 4001x99 crushed rock Rwy 30 down 0.32% first 1248', Rwy 12 up 0.64% first 456'
RWY CERT	Rwy 12/30 AGN IIIA
APRON	Apron I & II: Ltd win maint
RCR	APM 204-456-2736 13-18Z† & 19-22Z† Mon-Fri exc hols O/T MEDEVAC only 1 hr PN 431-668-1211
LIGHTING	12-(TE ME) P1, 30-(TE ME) P1 ARCAL-122.2 type K
COMM	
RCO	Thunder Bay rdo 122.2 (RAAS) Edmonton rdo 122.375 (FISE) 126.7 (bcst)
MF	Thunder Bay rdo 122.2 5NM 3800 ASL (CAR 602.98)
PAL	Winnipeg Ctr 132.825
AWOS	128.1
NAV	
NDB	YIV 300 (M) N53 51 14 W94 39 12
DME	YIL 116.0 Ch 107 N53 51 12 W94 39 12 (806')

MANITOBA

AERODROME / FACILITY DIRECTORY

ISLAND LAKE MB (Cont'd)

CYIV

PRO	Heli Northern Route - Transiting heli keep N of route btwn RESOURCES and THREE ISLANDS VFR checkpoints to remain clear of arr/dep acft at Island Lake A/D.
CAUTION	Extv low lvl heli tfc within MF area dur break-up & freeze-up. See Island Lake - St. Theresa Point VTPC. St. Theresa Point A/D, 7NM W. Three twr hydro cable span centered on N53 54 09 W94 42 49 (3.5NM NW aprt) 200 AGL 979 ASL, red & white markings on span. Ocsl blasting 1.0NM radius N53 52 01 W94 35 22 (2.3NM ENE of aprt) 200 AGL (1000 ASL) by NOTAM. Unlgtd twr 975 ASL (200 AGL) 0.9NM N. Extv bird activity Apr-Oct. Graded Areas: Graded areas around rwy for aprt maint vehicle only.