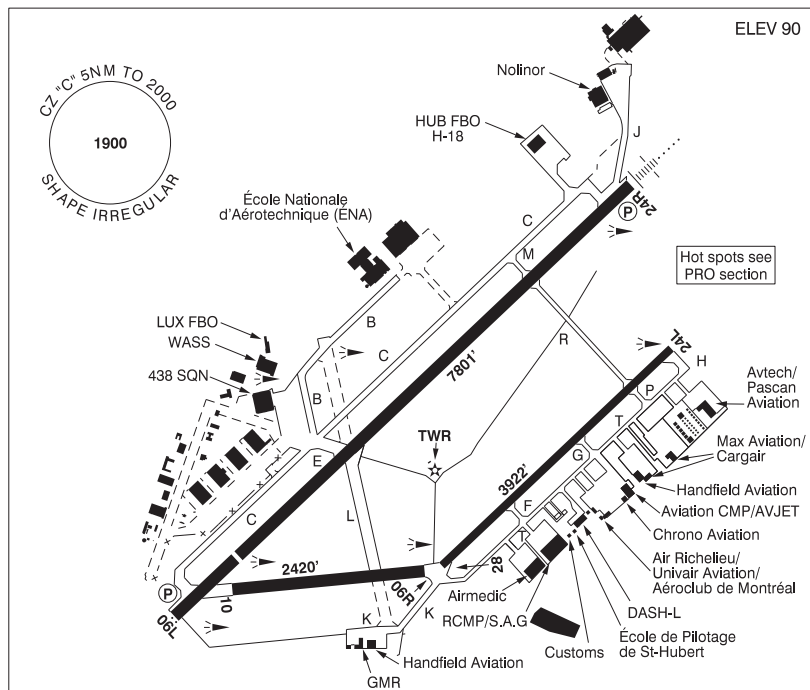


MONTRÉAL / MET (AÉROPORT MÉTROPOLITAIN DE MONTRÉAL) QC

CYHU



REF	N45 31 05 W73 25 01 3E 15°W (2010) UTC-5(4) Elev 90' VTA A5002 LO6 LO7 LO8 HI5 T2 CAP
OPR	MET (Aéroport métropolitain de Montréal) 450-678-6030 Cert Ldg fees
PF	B-1,2,3,6 C-4,5
CUST	AOE/15 888-226-7277 1330-0300Z± Mon-Fri exc hols
FLT PLN	(bil) FIG Québec 866-GOMÉTÉO or 866-WXBRIEF (Toll free within Canada) or 866-541-4105 (Toll free within Canada & USA) ACC Montréal 514-633-3211 or 800-633-1353. All Fit Plns, IFR tng fits PPR. Fit Plns by Fax at 514-633-2877 & include phone numbers where pilot can be reached prior to dep. WX METAR AUTO H24 (see COMM) TAF H24, issue times: 00, 06, 12, 18Z. WxCam

QUEBEC

AERODROME / FACILITY DIRECTORY

MONTRÉAL / MET (AÉROPORT MÉTROPOLITAIN DE MONTRÉAL) QC (Cont'd) CYHU

SERVICES

FUEL	100LL, JA-1 (FSII avbl), JP-4 F-34
OIL	All (Mil 123, 128, 133, 148, 156)
S	1 (ltd), 2,4,5,7
SUP FL	D & A-Ice, LHOX 13-21Z† Tue-Fri exc hols
JASU	Mil CE15, 16, CA2
MIL ADV	438 Sqn Ops - Call "WILDCAT OPS" 322.1 135.9 450-462-8777 ext 7216 CSN 472-7216 13-21Z† Mon-Fri. Ltd trans svcg. 24 hrs PN.
PVT ADV	AvJet Distribution 123.025 450-678-4440; Pascan 131.17 888-313-8777, 450-443-0500; HUB FBO H-18 122.8 450-468-4400; LUX FBO 122.470 514-312-1885
MIL CON	Avjet Holding Inc 450-678-4440

RWY DATA

Rwy 06L(062°)/24R(242°) 7801x150 ASPH Thld 06L displ 1105'.
 Rwy 06R(062°)/24L(242°) 3922x100 ASPH
 Rwy 10(100°)/28(280°) 2420x150 ASPH

RWY CERT

Rwy 06L/24R AGN IIIB
 Rwy 06R/24L AGN IIIA
 Rwy 10/28 AGN II

TWY CERT

Twy: F, G, H, J, K, P, T AGN IIIA

TWY

Twy B: First 500' fm ENA uncontrolled.

RCR

Opr 1200-2030Z† Mon-Fri Apr 21-Nov 19; 0330-2030Z† Mon-Fri Nov 20-Apr 20, AMSCR/CRFI O/T 1hr PN 514-214-8573, win maint O/T 3hrs PN 514-214-8573, call out chg. Rwy 06R/24L clsd 0400-1045Z† Mon-Fri, 0100-1045Z† Sat-Sun Nov 20-Apr 15; avbl as twy btwn Twy P and Twy R. PCN.

MIL

S50, T75, ST140, TT198.

LIGHTING

06R-(TE ME), 24L-(TE ME), 06L-AS(TE HI) P2, 24R-AN(TE HI) P2, 10-(TE HI), 28-(TE HI) ARCAL-118.4 type K for Rwy 06L/24R, PAPI & twy lgt B, C, E, J, K, M, P, R, T

COMM

(bil)

RCO Rouyn rdo 118.4 (RAAS) 0500-1045Z† Tue-Sat, 0300-1045Z† Sun-Mon Apr-Oct; 0400-1045Z† Tue-Sat, 0100-1045Z† Sun-Mon Nov-Mar

ATIS (English) 124.9 (French) 124.1 1045-0500Z† Mon-Fri, 1045-0300Z† Sat-Sun Apr-Oct; 1045-0400Z† Mon-Fri, 1045-0100Z† Sat-Sun Nov-Mar

GND St-Hubert 126.4 1045-0500Z† Mon-Fri, 1045-0300Z† Sat-Sun Apr-Oct; 1045-0400Z† Mon-Fri, 1045-0100Z† Sat-Sun Nov-Mar

TWR St-Hubert 118.4 (VFR ARR North) 121.3 (VFR ARR South and East) (V) 1045-0500Z† Mon-Fri, 1045-0300Z† Sat-Sun Apr-Oct; 1045-0400Z† Mon-Fri, 1045-0100Z† Sat-Sun Nov-Mar (emerg only 450-926-6458)

MF

Rouyn rdo 118.4 0500-1045Z† Tue-Sat, 0300-1045Z† Sun-Mon Apr-Oct; 0400-1045Z† Tue-Sat, 0100-1045Z† Sun-Mon Nov-Mar 5NM shape irregular 2000 ASL (CAR 602.98)

ARR Montréal 125.15 268.3

DEP Montréal 125.15 268.3

VFR ADV Montreal Tml 125.15

MIL 438 Sqn Ops 322.1 135.9

AWOS 124.9 (English) 124.1 (French) 0500-1045Z† Tue-Sat, 0300-1045Z† Sun-Mon Apr-Oct; 0400-1045Z† Tue-Sat, 0100-1045Z† Sun-Mon Nov-Mar

NAV

DME IHU 111.1 Ch 48 N45 31 21 W73 24 30 (113')

ILS IHU 111.1 (Rwy 24R) RVR

QUEBEC

AERODROME / FACILITY DIRECTORY

MONTRÉAL / MET (AÉROPORT MÉTROPOLITAIN DE MONTRÉAL) QC (Cont'd) CYHU

PRO	<p>Pilots should refer to Canadian Airport Charts (CAC) to obtain details on established hot spots, prior to operating on maneuvering areas. CAC are available for free on the NAV CANADA website.</p> <p>Pilots are requested to avoid flight below 2000 AGL when flying over the Mont-Saint-Hilaire Migratory Bird Sanctuary (Saint-Hilaire, QC N45 33 00 W73 09 00)</p> <p>Circuits: Rgt hand circuits Rwy 06R, 24R & 28 (CAR 602.96). Preferential rwy: Btwn 04-12Z†, all acft shall, when aprt and wx conditions permitting, land on Rwy 24R and take-off Rwy 06L. Departure: 24L rstd to single engine acft having a GTOW of less than 5000 lbs. Rwy 24L and 24R climb rwy hdg to 1100 ASL BPOC or in the circuit. All VFR acft leaving the CZ, climb to not above 1100 ASL or as assigned by ATC. VFR Codes: Refer to MONTRÉAL VTPC section VFR FLIGHTS IN MONTRÉAL/TRUDEAU, MONTRÉAL/MET (AÉROPORT MÉTROPOLITAIN DE MONTRÉAL), MONTRÉAL (MIRABEL) AND MONTRÉAL TERMINAL CLASS C AIRSPACE. VFR acft towards Montréal/Trudeau: Outside TWR oprg hours, VFR acft proceeding towards Montreal CZ are required to proceed via Lafontaine Tunnel at 2000 ASL or lower if necessary due wx. Mil ramp: PPR 48 hrs 438 Sqn Ops CSN 472-7216. Airspace: Standardized use of common freq 122.1 (north) and 122.575 (south) in Class G airspace around the CZ. CYA 627(S) aprx 20NM NE of aprt up to 3000 ASL cont daylight. Training: VFR circuits PPR 1-800-633-1353 Training areas: See Montréal Terminal VTPC.</p> <p>MONTRÉAL/MET (AÉROPORT MÉTROPOLITAIN DE MONTRÉAL) CZ AIRSPACE SPLIT FOR VFR FLIGHTS</p> <p>During the hours of operation of the control tower, CYHU CZ is divided into two sectors for VFR arrivals with separate frequencies:</p> <ul style="list-style-type: none"> - All VFR arrivals from VARENNES QUARRY ctc St-Hubert TWR on 118.4 (ARR VFR North). - All VFR arrivals from CHAMBLY and ST-PHILIPPE ctc St-Hubert TWR on 121.3 (ARR VFR South and East). <p>VFR ARR/DEP ROUTES</p> <p>All VFR aircraft should follow arrival and departure routes, unless otherwise specified by ATC. See "VFR TERMINAL PROCEDURES CHART - ARR/DEP" for additional details.</p>
CIV HELI	Ctc Gnd 126.4 prior to dep. Dep & arr req Marina, Tunnel, North or Tower rtes or as cleared by ATC. See HELI VTPC for rtes & alts.
MIL HELI	Ctc Gnd 126.4 prior to dep. Holding bay Rwy 06L designated as ldg/tkof pad. See HELI VTPC or rtes & alts.
NOISE	Touch and go: Pursuant to CAR 602.105, the following noise control requirements apply at Montreal/Met (Aéroport Métropolitain de Montréal) airport. Rwy 24L & 24R not auth Oct 1-Apr 30 24-08 hr lcl Mon-Fri, 19-08 hr lcl Sat-Sun. Rwy 24L & 24R not auth May 1-Sep 30 23-08 hr lcl Mon-Fri, 15-08 hr lcl Sat, Nil Sun & hol(s). Noise oprg restrictions & noise abatement procedures in effect. See CAP.
CAUTION	<p>Blasting ops: 9.5NM NE.</p> <p>Beloeil A/D: lctd 8NM NE of Rwy 24. (Circuits ht 1000 ASL).</p> <p>Taxiway: Due to aprt layout twy "T" may be mistaken for Rwy 24L. Firing range: lctd 4.9NM NE of Rwy 24.</p> <p>Mil Ramp: Large mag anomaly in front of the 438 Sqn hg causing mag compasses to deviate as much as 90°.</p>