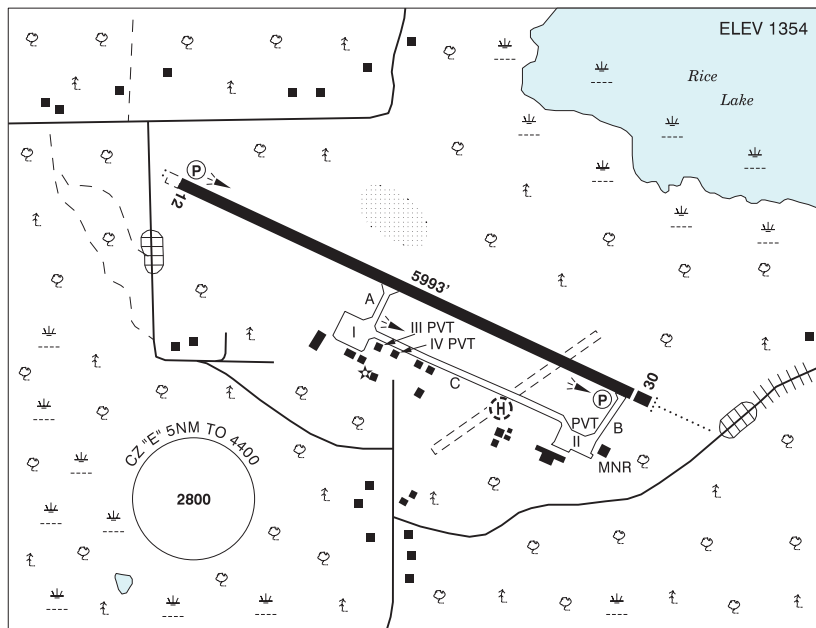


ONTARIO

AERODROME / FACILITY DIRECTORY

DRYDEN REGIONAL ON

CYHD



REF	N49 49 53 W92 44 37 4.3NE 1°W (2012) UTC-6(5) Elev 1354' A5007 LO4 HI4 CAP
OPR	City of Dryden/The Loomex Group 807-223-1130 13-23‡ Mon-Sat O/T 1 hr PN. Call out chg Cert Ldg fees
PF	A-1,6,7,8 avbl 12-01Z‡ C-2,3,4,5,6 After hrs groundside access at FBO gate code 351
FLT PLN	Pilots to open/close VFR flt plan with London rdo, FISE or by phone
FIC	London 866-WXBRIEF (Toll free within Canada) or 866-541-4104 (Toll free within Canada & USA)
WX	METAR AUTO H24 (See COMM) TAF H24, issue times: 02, 08, 14, 20Z. WxCam
SERVICES	PN and svc chg apply for after hr svc
FUEL	100LL, JA-1 (FSII avbl) May 1-Sep 30 13-01Z‡, Oct 1-Apr 30 14-23‡, ctc 807-221-8032 or 807-937-5122 or Fax 807-937-6222
OIL	20W50 and TURBO 2380 only
S	1(ltd),2,3,4,5,6
MILCON	Morgan Aviation 807-937-5122
RWY DATA	Rwy 12(116°)/30(296°) 5993x150 ASPH Thld 30 displ 197'.
RWY CERT	Rwy 12/30 AGN IV
TWY	Twy C asphalt, 1000' mid-section gravel sfc.
APRON	Apron I public, overnight pkg fees, Apron II pvt PN 807-223-1130, Apron III pvt, Apron IV pvt
RCR	Opr 13-23‡ Mon-Sat O/T 1 hr PN. Call out chg CRFI, PCN 1 hr PN 807-323-1954.
LIGHTING	12-AS(TE HI) P1, 30-AD(TE HI) P1 ARCAL-122.1 type K

ONTARIO

AERODROME / FACILITY DIRECTORY

DRYDEN REGIONAL ON (Cont'd)

CYHD

COMM	RCO	Sioux Lookout rdo 122.1 (RAAS)
	MF	Sioux Lookout rdo 122.1 5NM 4400 ASL (CAR 602.98)
	PAL	Winnipeg Ctr 132.2
	A/G	MNR Ops 122.9
	AWOS	128.7
NAV	DME	IHD 109.7 Ch 34 N49 50 06 W92 44 59 (1349')
	ILS	IHD 109.7 (Rwy 12) RVR
	CAUTION	Rock outcrop 740' from dep end of Rwy 12, 690' rgt of centreline 1465 ASL. Possibility of wildlife within aprt perimeter. Aerobatics may be in progress over aprt 4400 ASL & below.