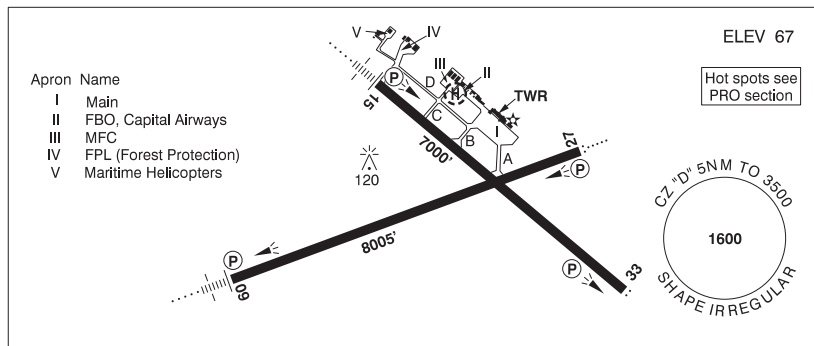


NEW BRUNSWICK

AERODROME / FACILITY DIRECTORY

FREDERICTON INTL NB

CYFC



REF	N45 52 08 W66 32 14 7SE 18°W (2014) UTC-4(3) Elev 67' A5003 LO8 HI6 CAP OC
OPR	Fredericton International Airport Authority Inc. 506-460-0920 0845-0515Z† Cert
PF	A-1,2,3,6,7 C-4,5
CUST	AOE/55 (140 with staged off-loading) 12-04Z† 888-226-7277
FLT PLN	<p>FIG London 866-WXBRIEF (Toll free within Canada) or 866-541-4104 (Toll free within Canada & USA)</p> <p>ACC (IFR only) Moncton 506-867-7177 or 866-480-8200.</p> <p>WX METAR AUTO H24 WxCam TAF H24, issue times: 00, 06, 12, 18Z.</p>
SERVICES	Call out chg may be levied for one or more svcs
FUEL	100LL, JA-1 (FSII avbl), F-34, IP, HPR
OIL	15W50
S	1,2,4,6 Capital Airways
ARFF	DESIGNATED CAT 6 (CAT 7 4 hr PN) 0845-0515Z†
JASU	CE16 Capital Airways
PVT ADV	Capital Airways Inc. 122.87 506-446-3588 12-22Z† O/T PN 506-238-3653 call out chg. Air Canada Ground Handling 130.375 506-446-6133
MIL CON	Menzies Aviation/ASIG 1-506-470-2320
RWY DATA	Rwy 09(087°)/27(267°) 8005x200 ASPH Rwy 15(148°)/33(328°) 7000x150 ASPH RESA: Rwy 15 492'
RWY CERT	Rwy 09 RVR 1200(1/4 sm)/Rwy 27 RVR 1200(1/4 sm) AGN V Rwy 15 RVR 1200(1/4 sm)/Rwy 33 RVR 1200(1/4 sm) AGN V
TWY CERT	Twy C AGN II Twy D AGN IIIB
TWY	Twy C uncontrolled NE of Twy D
HELI DATA	Parking Pad: 60' dia ASPH Max heli overall length 49'
RCR	Opr CRFI, win maint 0915-0400Z† PN for extended svc. PCN
LIGHTING	09-AN(TE HI) P2, 27-AO(TE HI) P2, 15-AN(TE HI) P2, 33-AS(TE HI) P2 ARCAL-119.0 type K (when twr closed)

NEW BRUNSWICK

AERODROME / FACILITY DIRECTORY

FREDERICTON INTL NB (Cont'd)

CYFC

COMM	RCO	Saint John rdo 119.0 PTC avbl (RAAS) 0345-1045Z† (emerg only 506-646-7223)
	ATIS	127.55 1045-0345Z† (O/T AWOS)
	GND	121.7 1045-0345Z†
	TWR	119.0 (E) 1045-0345Z† (emerg only 506-446-3420)
	MF	Saint John rdo 119.0 0345-1045Z† 5NM 3500 ASL (CAR 602.98)
	PAL	Moncton Ctr 124.3 135.5 270.8
NAV	DME	IDC 111.3 Ch 50 N45 51 47 W66 32 52 (86')
	ILS	IDC 111.3 (Rwy 09) RVR
PRO	<p>Pivot turnaround proh; acft must use all avbl rwy width when making turnaround. Dep Rwy 15 turn as soon as practicable after tkof to remain clear of CYR724. Transponder MODE C required within the Fredericton CZ. Pilots should refer to Canadian Airport Charts (CAC) to obtain details on established hot spots, prior to operating on maneuvering areas. CAC are available for free on the NAV CANADA website.</p> <p>VFR ARR/DEP ROUTES: See FREDERICTON VTPC - TRAINING AREAS</p>	
CAUTION	<p>RESTRICTED AREAS: Extv live firing in CYR724, 725 4NM SE of aprt. AIRSPACE: Gagetown Class "E" CZ 3.5NM SE to 3500 ASL.</p>	