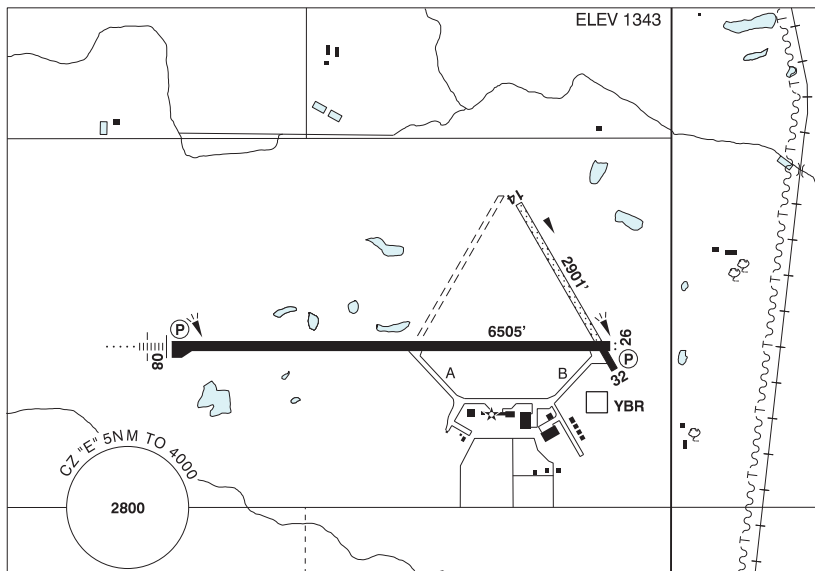


MANITOBA

AERODROME / FACILITY DIRECTORY

BRANDON MUNI MB

CYBR



REF	N49 54 36 W99 57 08 4N 6°E (2013) UTC-6(5) Elev 1343' A5007 LO4 HI4 CAP
OPR	Muni 204-729-2166 12-02Z‡ Mon-Fri, 14-24Z‡ Sat-Sun Cert Ldg fees
PF	A-1 C-2,3,4,5,6
CUST	AOE/15 888-226-7277 15-23Z‡
FLT PLN	Pilots to open/close VFR fit plan with Edmonton rdo, FISE or by phone.
FIC	Edmonton 866-WXBRIEF (Toll free within Canada) or 866-541-4102 (Toll free within Canada & USA)
WX	METAR 13-04Z‡ O/T METAR AUTO (see COMM). TAF H24, issue times: 00, 06, 12, 18Z. WxCam
SERVICES	Call out chg may be levied for one or more svc
FUEL	100LL, JA-1 (FSII avbl), SP, HPR 14-23Z‡ O/T call out chg
OIL	All
S	1,2,3,4 (ltd),5,6
SUP FL	D-ice (avbl by truck)
JASU	CE16
PVT ADV	Brandon Flight Centre 122.95 204-728-7691
RWY DATA	Rwy 08(085°)/26(265°) 6505x150 asphalt Rwy 14(145°)/32(325°) 2901x60 treated gravel/asphalt First 438' Rwy 32 asphalt
RWY CERT	Rwy 08/26 AGN IIIB Rwy 14/32 AGN II
APRON	No power turns permitted on tml apron.
RCR	Opr Ltd win maint Rwy 14/32. Rwy 14/32 rstd to acft under 12,000 lbs. A/D maint 12-02Z‡ Mon-Fri, 14-24Z‡ Sat-Sun O/T 1 hr PN for AMSCR and CRFI. Call out charge may be levied. 204-729-7026.
LIGHTING	08-AN(TE HI) P2, 26-AS(TE HI) P2 ARCAL-122.1 type K avbl when FSS clsd

MANITOBA

AERODROME / FACILITY DIRECTORY

BRANDON MUNI MB (Cont'd)

CYBR

COMM	<p>RADIO 122.1 (E) 13-04Z‡ (emerg only 204-728-7169)</p> <p>RCO Edmonton 123.275 (FISE) 126.7 (bcst)</p> <p>MF rdo 13-04Z‡ O/T tfc 122.1 5NM 4000 ASL (CAR 602.98)</p> <p>ARR Winnipeg Ctr 132.25</p> <p>DEP Winnipeg Ctr 132.25</p> <p>PAL Winnipeg Ctr 132.25</p> <p>AWOS 128.175 04-13Z‡</p>
NAV	<p>DME YBR 113.8 Ch 85 N49 54 18 W99 56 22 (1378')</p> <p>DME IBR 110.1 Ch 38 N49 54 31 W99 57 43 Pvt</p> <p>ILS IBR 110.1 (Rwy 08) Pvt</p>
PRO	<p>Rgt hand circuits Rwy 26 (CAR 602.96). Periodic extv glider ops to 4000 MSL. Gliders & tow acft opr fr infield S of Rwy 08/26. Glider & tow acft circuits S of Rwy 08/26. Rgt hand circuits Rwy 32 (CAR 602.96). Gliders & tow acft opr fr infield W of Rwy 14/32. Glider & tow acft circuits W of Rwy 14/32. Acft inbd fr the S may be requested to rpt crossing the Trans Canada Hwy.</p> <p>ATS PPR REQUIREMENTS: Ctc Winnipeg ACC 204-984-5979 for IFR tng and photo survey within Brandon Class E Airspace 12,500' and below.</p>
CAUTION	<p>Hydro P-lines 154 AGL unlgtd 9000' E of Thld 26. Ocsl parajump activity within 1.5NM of A/D to 14,000 ASL. Hi ints lgt oprg dusk to dawn fr hotel roof at N49 49 56 W99 57 40 (4.7NM S A/D). Beams projecting upward. Hi ints lgt may create temporary effects to vision.</p>