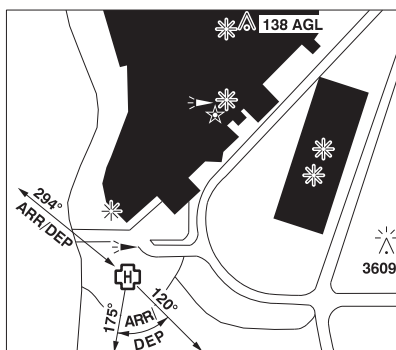
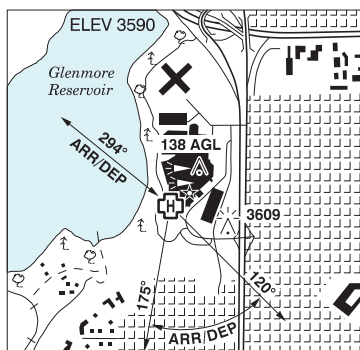


## CALGARY (ROCKYVIEW HOSP) AB (Heli)

CEM2



<b>REF</b>	N50 59 18 W114 05 54 15°E (2013) UTC-7(6) Elev 3590' VTA A5005
<b>OPR</b>	Alberta Health Services 403-943-3000 Cert NVIS OPS AUTH PPR
<b>FLT PLN</b>	
<b>FIC</b>	Edmonton 866-WXBRIEF (Toll free within Canada) or 866-541-4102 (Toll free within Canada & USA)
<b>ACC</b>	Edmonton IFR 888-358-7526
<b>HELI DATA</b>	FATO/TLOF 86' dia CONC Safety Area 115' dia
<b>LIGHTING</b>	RW(ME) PN
<b>COMM</b>	
<b>VFR ADV</b>	119.4
<b>PRO</b>	Arr/dep 120° to 175° fr heli, slope 16% (H2) and arr/dep 294° fr heli, slope 16% (H2).