

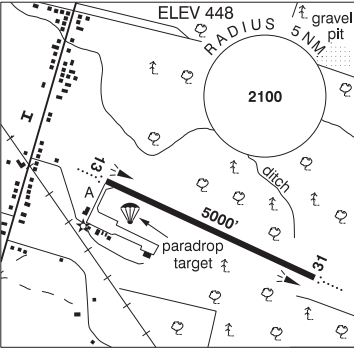
QUEBEC

AERODROME / FACILITY DIRECTORY

ALMA QC

CYTF

REF	N48 30 31 W71 38 29 2.2S 17°W (2014) UTC-5(4) Elev 448' A5010 LO6 LO7 HI5 HI6 CAP
OPR	CIDAL 418-669-5104 13-21Z± Mon-Fri Cert Ldg fees, tml fees
PF	A-1,2,7 C-3,4,5,6
FLT PLN	(bil)
FIC	Québec 866-GOMÉTÉO or 866-WXBRIEF (Toll free within Canada) or 866-541-4105 (Toll free within Canada & USA)
ACC	Montréal 800-633-1353
WX	AUTO 418-669-5406 (see COMM)



SERVICES	1230-2130Z± Mon-Fri exc hols, O/T 1 hr PN 418-480-8686. Call out chg may be levied for one or more svcs.
FUEL	100LL (fuel management tml avbl, ctc opr to receive code), JA-1 (FSII avbl), SP
S	1(Ltd),2,3,4,5,6
JASU	Electric start 10/15
RWY DATA	Rwy 13(131°)/31(311°) 5000x100 ASPH Rwy 31 down 0.37%
RWY CERT	Rwy 13/31 AGN IIIA
TWY CERT	Twy A AGN II
RCR	Opr CRFI Win maint O/R 1530-2130Z± Mon-Fri exc hols, O/T 3 hrs PN 418-480-8686, call out chg may be levied. PCN
LIGHTING	13-AO(TE ME), 31-AO(TE ME) ARCAL-122.35 type K
COMM	(bil)
CLNC DEL	Prior dep pilots must ctc Bagotville Tml for IFR clnc at 888-813-8508.
MF/ATF	UNICOM 1330-2030Z± Mon-Fri, exc hols (CAR 602.98) O/T tfc 122.35 5NM 3500 ASL
TML	Bagotville 127.2 227.6
VFR ADV	Bagotville Tml 121.2
AUTO	123.175
NAV	
DME	ITF 110.7 Ch 44 N48 30 14 W71 37 47 (458')
LOC	ITF 110.7 (Rwy 13)
PRO	Several areas of Class F of restricted airspace (CYRs) have been established in the Alma area for flight testing of Remotely Piloted Aircraft (RPA). These CYRs are activated occasionally by NOTAM with 48 hours prior notice. No person shall operate an aircraft within an active CYR unless the flight has been authorized by the User Agency as stated in the Designated Airspace Handbook (DAH). When CYR651 is active and access to the Alma airport is required, to avoid delays pilots should make prior arrangements with the User Agency for authorization to operate within the CYR. Pilots can contact Alma UNICOM MF 122.35 for authorization but unless the flight is essential such as MEDEVAC, police, emergency, etc., access may be delayed. Once authorized, pilots must enter and exit CYR651 from the northeast and operations are restricted to circuit procedures for arrivals and departures from the airport only. See Alma VTPC for a depiction of the CYRs.
CAUTION	Parachute jumps over apt to 12,500 ASL, (DT 12-24Z) May-Sep. Possible win maint eqpt on rwy outside ops hrs. Migratory bird activity Apr-Nov.