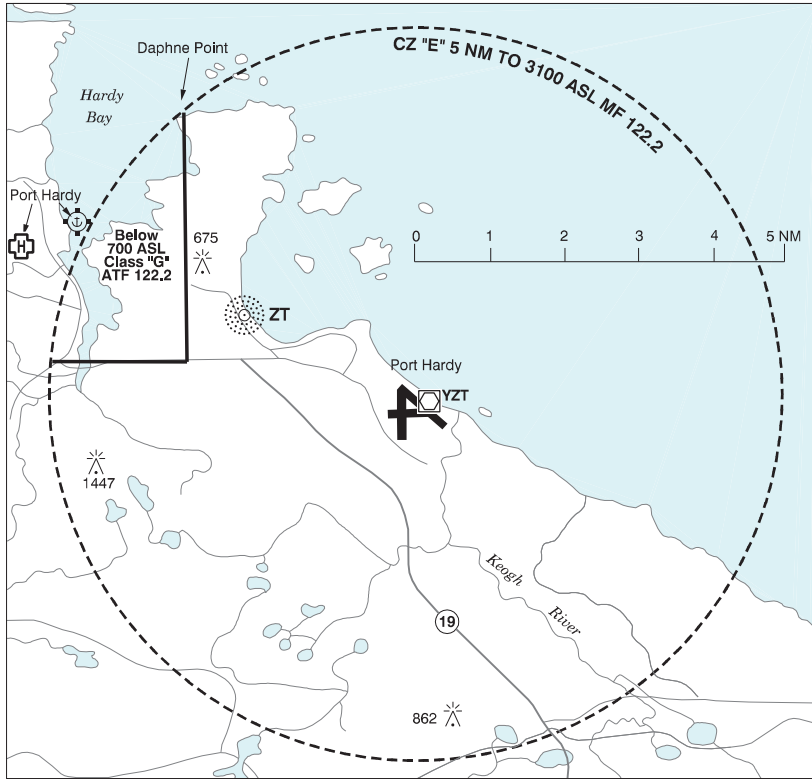


CANADA FLIGHT SUPPLEMENT / GPH 205

Effective 0901Z 12 August 2021 to 0901Z 7 October 2021

AERODROME/FACILITY DIRECTORY B835

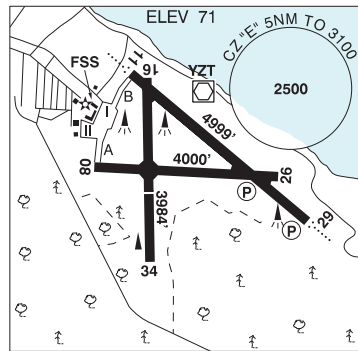
PORT HARDY VFR TERMINAL PROCEDURES CHART



PORT HARDY BC

CYZT

REF	N50 40 50 W127 22 00 5.2SE 18°E (2014) UTC-8(7) Elev 71' A5004 LO2 HI3 CAP
OPR	TC 250-949-6424 Fax 250-949-9013 Cert Ldg fees (jet and turboprop acft only) Tml fees
PF	A-1,2,3,6 C-5 D-4
CUST	AOE/15 888-226-7277 16-08Z†
FLT PLN	
FIC	Kamloops 866-WXBRIEF (Toll free within Canada) or 866-541-4101 (Toll free within Canada & USA)
WX	METAR H24. TAF H24, issue times: 01, 07, 13, 19Z.



CANADA FLIGHT SUPPLEMENT / GPH 205

Effective 0901Z 12 August 2021 to 0901Z 7 October 2021

B836 AERODROME/FACILITY DIRECTORY

PORT HARDY BC (Cont'd)

CYZT

SERVICES	
FUEL	100LL, JA-1 (FSII avbl), HPR
OIL	All
S	1,2,4,5,6
PVT ADV	Esso Avn 250-949-5153 15-04Z† Mon-Fri, 16-00Z† Sat, 17-04Z† Sun O/T 250-949-1037
MIL CON	Pacific Coastal Airlines (World Fuel Services) 250-949-5153
RWY DATA	Rwy 11(113°)/29(293°) 4999x150 ASPH Rwy 08(076°)/26(256°) 4000x150 ASPH Rwy 26 up 0.98% Rwy 16(162°)/34(342°) 3984x150 ASPH Rwy 16 up 0.75% Thld 34 displ 1491'
RWY CERT	Rwy 11/Rwy 29 RVR 1200(1/4sm) AGN IIIB Rwy 08/26 AGN IIIB Rwy 16/34 AGN II
TWY	No vehicle control
APRON	Prkg fees
RCR	Opr CRFI, Win maint 15-23Z Mon-Fri exc hols O/T PN, call out charges apply. No win maint Rwy 16/34. Rwy 16/34 rstd to acft gr wt of 12,500 lbs or less. PLR/PCN.
LIGHTING	08-(TE ME), 26-(TE ME) P2, 11-AO(TE ME), 29-AO(TE ME) P2
COMM	
RADIO	Hardy 122.2 (E) (emerg only 250-949-6331)
RCO	Pacific rdo 123.375 (FISE) 126.7 (bcst)
MF	Hardy rdo 122.2 5NM 3100 ASL excluding class G ATF (CAR 602.98). Refer to Port Hardy VTPC.
PAL	Vancouver Ctr 132.2 266.3
NAV	
NDB	ZT 242 (M) N50 41 57 W127 25 37
VOR/DME	YZT 112.0 Ch 57 N50 41 03 W127 21 55 (58')
DME	IZT 109.5 Ch 32 N50 40 34 W127 21 09 (21')
ILS	IZT 109.5 (Rwy 11) LOC reliable only within 10° either side of centreline.
PRO	Rgt hand circuits Rwy 26 & 29 (CAR 602.96). Reduced Visibility Operations Plan (RVOP): Rwy 08/26, Rwy 16/34 and Twy A not available for acft taxi when vis below RVR 2600 (1/2sm) (CAR 602.96). Pilots preparing to depart the ramp in vis less than RVR 2600 (1/2sm) must ensure that no other acft are on the maneuvering areas (CAR 602.96).
CAUTION	Trees to 150 AGL within 500' of Rwy 08, 11, 26, 29 & 34. Extv eagle activity in the vic of Thlds 26 & 29. Radiosonde balloon launches with an ascent rate of 1000 ft/min daily between the hours of 1115-1345Z and 2315-0145Z.

PORT HARDY FSS - RCO

Tofino 123.25 (RAAS) 1330-0530Z† (N49 05 W125 51)