

CANADA FLIGHT SUPPLEMENT / GPH 205

Effective 0901Z 12 August 2021 to 0901Z 7 October 2021

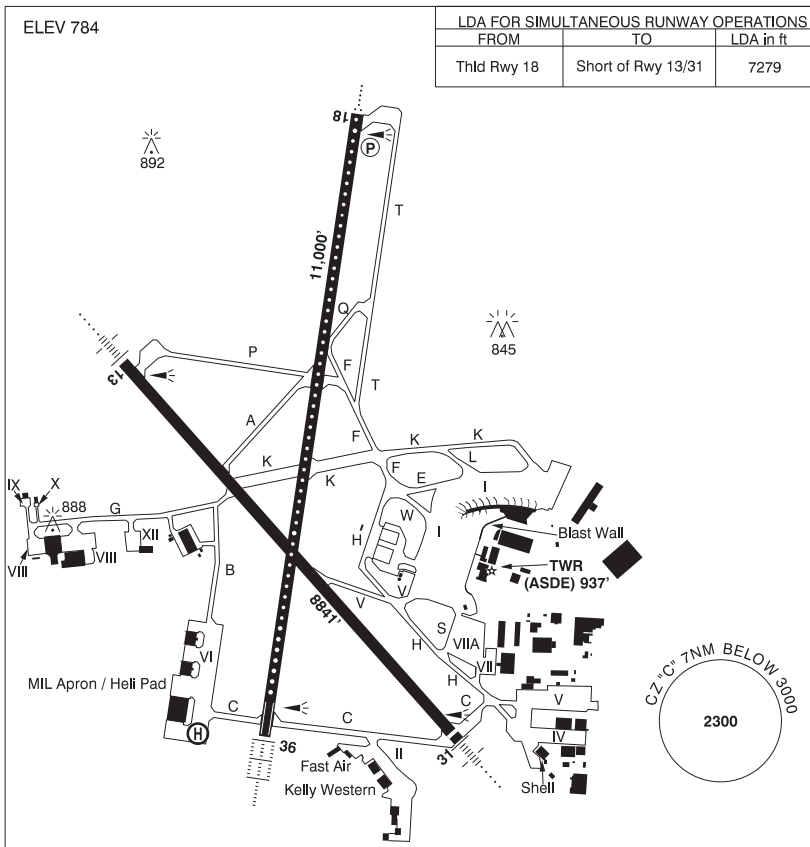
AERODROME/FACILITY DIRECTORY B1247

WINNIPEG / JAMES ARMSTRONG RICHARDSON INTL VFR TERMINAL PROCEDURES CHART (Cont'd)

LOCATION	IDENT	LAT/LONG
CLANDEBOYE	VCLND	N50°14.50 W96°58.50
DUGALD	VCDGH	N49°53.00 W96°50.00
EAST SELKIRK	VCESK	N50°08.00 W96°49.50
HWY 59/FLOODWAY BRIDGE	VCHWY	N49°58.00 W96°59.00
IKEA	VCKEA	N49°50.47 W97°12.58
McPHILLIPS CLOVERLEAF	VCPER	N49°59.00 W97°06.00
MEADOWS	VCMD5	N50°02.00 W97°35.50
REFINERY	VCREF	N49°48.50 W97°02.00
ROSSER POWER STATION	VCRSR	N49°59.50 W97°25.50
STONEWALL	VCSTW	N50°08.00 W97°19.50

WINNIPEG / JAMES ARMSTRONG RICHARDSON INTL MB

CYWG



REF N49 54 36 W97 14 24 Adj W 3°E (2014) UTC-6(5) Elev 784' VTA A5007 LO4 HI4 T1 CAP OC

OPR Winnipeg Airports Authority 204-987-9798, DND Ops 877-283-6827
H24 Cert Ldg fees

CANADA FLIGHT SUPPLEMENT / GPH 205

Effective 0901Z 12 August 2021 to 0901Z 7 October 2021

B1248 AERODROME/FACILITY DIRECTORY

WINNIPEG / JAMES ARMSTRONG RICHARDSON INTL MB (Cont'd) CYWG

PF	A-1,2,3,6,7,8 B-4 C-5 Mil trans quarters extremely ltd. Mil on Base Transport avbl 13-05Z‡ Mon-Thur, 13-21Z‡ Fri, 2130-0500Z‡ Sun, unavbl Sat.
CUST	AOE 888-226-7277
FLT PLN	
FIC	Winnipeg 866-WXBRIEF (Toll free within Canada) or 866-541-4103 (Toll free within Canada & USA) or 204-983-8407 (file 30 min prior ETD, see PRO)
ACC	IFR, 204-983-8337 or 888-834-3344 or flt pln by Fax at 204-983-2823 & include phone numbers where pilot can be reached prior to dep.
WX	METAR H24. TAF H24, issue times: 00, 06, 12, 18Z. Met brief for mil only. JMC 1-800-WXMETEO (996-3836) or CSN 432-2613. (See COMM)
DUAT	Fast Air; Kelly Western; Shell Aviation Winnipeg
SERVICES	
FUEL	100LL, F-34, JA-1 FSII (avbl), HPR
OIL	All (Mil 123, 128, 133, 148, 156)
S	1,2,3,4,5,6
ARFF	DESIGNATED CAT 7 (CAT 8 avbl with prior arrangement, ctc WAA 204-987-9798) Discrete emerg freq 122.675
SUP FL	LHOX, D & A-ice Mil LOX, Nitrogen avbl PN via NOVA msg only.
JASU	GE12, 13, 14, 16, CA2, CEA1
MIL ADV	All tran acft require PPR thru 17 Wg Ops CSN 319-257-2700 204-833-2700 Toll Free 877-283-6827. PPR valid for ± 1 hr ETA. Tran svcg avbl 14-02Z‡ Mon-Fri, wknds & hols 14-21Z‡. 24 hr PN wkds, 48 hr PN for wknds or hol. Non-compliance could result in delays for Mil svcg & prkg or svcg being referred to civ contractor. Mil acft emerg hg space only. 17 Wg ops will arrange D & A-ice with CDF contractor when req by aircrew. All applicable costs will be the responsibility of the aircrew home unit. Mil svcg rstd to park, start & refuelling with Aircrew Supervision exc for CC130 acft. No tow bar for CP140, CT155 & CT156 acft. Ctc Wg Ops (131.4 or 308.8) 20 min prior to ETA & before entering or exiting Mil ramp.
PVT ADV	Fast Air 123.0 204-831-7714; Kelly Western 122.85 204-948-9500; Shell Aviation Winnipeg 123.35 204-956-6172
MIL CON	Exchange Petroleum (Shell) 204-956-6172
RWY DATA	Rwy 18(185°)/36(005°) 11,000x200 ASPH Rwy 13(135°)/31(315°) 8841x200 ASPH Thld 31 displ 140' RESA: 13 738'; 31 492'
RWY CERT	Rwy 18 RVR 1200(1/4sm)/Rwy 36 RVR 600 AGN VI Rwy 13 RVR 1200(1/4sm)/Rwy 31 RVR 1200(1/4sm) AGN VI
TWY CERT	Twy A AGN IV Twy: B, G AGN V
TWY	Twy A rstd to acft less than 160,000 lbs exc B757 & B767. Twy G uncontrolled.
APRON	Apron I, pkg posns assigned by aprt. Acft shall be pushed back straight fr all bridge locations on Apron I unless otherwise auth. Acft taxiing or being towed to or fr Apron I ctc gnd ctl prior to manoeuvring. Apron II rstd to acft with wingspan less than 118'. Apron V rstd to acft with wingspan less than 135', with strict adherence to centreline. Apron VIIA, acft with wingspan larger than 170' require discretionary oversteer fr Twy H entry. Ctc aprt for stand assignment.
RCR	Opr CRFI, PLR/PCN
LIGHTING	13-AN(TE HI), 31-AN(TE HI), 18-AO(TE HI CL) P2, 36-AL(TE HI TDZL)

CANADA FLIGHT SUPPLEMENT / GPH 205

Effective 0901Z 12 August 2021 to 0901Z 7 October 2021

AERODROME/FACILITY DIRECTORY B1249

WINNIPEG / JAMES ARMSTRONG RICHARDSON INTL MB (Cont'd)

CYWG

COMM	<p>RCO Winnipeg rdo 123.25 (FISE) 126.7 (bcst) (V) (emerg only 204-983-8407)</p> <p>ATIS 120.2</p> <p>CLNC DEL 121.3 all dep acft to ctc clnc del</p> <p>GND 121.9</p> <p>TWR 118.3 125.4 (V) (emerg only 204-983-6705)</p> <p>ARR 119.5</p> <p>DEP 121.0 (West) 119.9 (East)</p> <p>VFR ADV 121.0 (West) 119.9 (East)</p> <p>MIL Base Ops 131.4 308.8</p>
NAV	<p>NDB WG 248 (M) N49 53 57 W97 20 57 STONE Y ZWG 287 (L) N49 59 21 W97 13 11 FORKS ZHT 236 (L) N49 50 02 W97 08 39 DOWNS ZWN 201 (L) N49 57 50 W97 19 18 BOINE ZWW 215 (L) N49 49 48 W97 15 25 LA SALLE LF 336 (L) N49 38 33 W97 18 00 BALMORAL BM 375 (L) N50 08 14 W97 18 35</p> <p>VORTAC YWG 115.5 Ch 102 N49 55 40 W97 14 21 (820°)</p> <p>ILS INP 109.5 (Rwy 13) RVR LOC reliable only within 10° either side of centreline; IHW 109.9 (Rwy 36) RVR LOC reliable only within 10° either side of centreline; IHV 110.3 (Rwy 31) RVR LOC reliable only within 10° either side of centreline</p>
PRO	<p>AIRPORT: Rgt hand circuits Rwy 13 & 18 (CAR 602.96). Circuit hgt all rwys 2000 ASL.</p> <p>Arrival Requirements</p> <ol style="list-style-type: none"> On apch, cross the FAF at 170 kt or less. On visual apch, intercept final at or outside the final apch FAF for landing rwy unless otherwise authorized by ATC. <p>Note: Refer to NOISE ABATEMENT PROCEDURES for additional requirements.</p> <p>Training Flight / Photo Block Requirements</p> <p>PPR for all block air work, photo flight or training flight operating in Winnipeg TCA. Ctc Winnipeg ACC 204-984-5979 Fax 204-983-2823.</p> <p>Note: Refer to NOISE ABATEMENT PROCEDURES for additional requirements.</p> <p>ATS VFR REQUIREMENTS:</p> <ol style="list-style-type: none"> Transponder mode C rqd for flt within Winnipeg CZ & TCA: <ul style="list-style-type: none"> Obtain transponder code at least 15 min prior to entering Class C airspace. Ctc Winnipeg FIC 866-541-4103 or applicable FISE freq. Set transponder to discrete code prior to contacting ATC. Acft originating or intending flt within Winnipeg CZ & TCA must file flt plan, itinerary or intentions. Ctc Winnipeg FIC 866-541-4103 at least 15 min prior to ETD. VFR Circuits: PPR, Ctc Winnipeg ACC 204-984-5979. <p>DE-ICING OPERATIONS</p> <p>De-icing bays 1, 3, 4, 6: Each pad is capable of deicing two acft with wingspans of up to 38.05m (124.83 ft) simultaneously.</p> <p>De-icing bays 2, 5: One acft with a wing span greater than 38.05m (124.83 ft)</p> <p>See CAP Central De-icing Facility chart.</p> <p>For more information, ctc Icehouse 204-987-9436.</p> <ol style="list-style-type: none"> Notify PAD CONTROL on 122.925 and WINNIPEG GND prior to push back when deicing is required. Hold short of Central De-icing Facility (CDF) and ctc PAD CONTROL on 122.925. Note: In the event that the "Hold" light and/or inset lgt can not be utilized, the CDF will deploy a "Follow Me" vehicle. All deicing operations are performed with acft engines running, unless otherwise advised by PAD CONTROL. <p>CAUTION: all oprg engines must be maintained at gnd idle thrust settings.</p>

CANADA FLIGHT SUPPLEMENT / GPH 205

Effective 0901Z 12 August 2021 to 0901Z 7 October 2021

B1250 AERODROME/FACILITY DIRECTORY

WINNIPEG / JAMES ARMSTRONG RICHARDSON INTL MB (Cont'd) CYWG

PRO (Cont'd)	4. Once de-icing is complete, acft will be instructed to ctc WINNIPEG GND for taxi cline. DO NOT ENTER TWY H WITHOUT ATC CLEARANCE. MINIMUM BREAKAWAY THRUST MUST BE USED.
NOISE	Maint engine run-ups & lcl flt tng PPR, ctc 204-987-9798 - one call. Noise oprg restrictions & noise abatement procedures in effect, see current CAP.
HELI	Use extreme caution at apron II due to lgt acft & 10' high security fence S of apron. Air taxi along aprons IV & V proh. Caution: 7' high security fence 50' S of Mil ramp 6.
MIL	IFR or VFR tran mil jet acft will conduct a straight-in apch commencing at or outside the final apch fix for the rwy in use, overhead breaks not auth. All VFR Flt Plns within Winnipeg TCA shall include an alt. MIL De-icing All Mil aircrew to arrange de-icing through Wg Ops Ctr.
CAUTION	Radiosonde balloon launches with an ascent rate of 1000 ft/min btwn the hrs of 1715Z-1730Z fr U of M (N49 48 09 W97 08 34, 7.5NM SE aprt, aprx 1.2NM SW fr extended rwy centreline 13/31). Ocsl para jumps by 435 Sqn 15-21Z± Mon-Fri. Max alt 3000 ASL. Drop zone 1.5NM radius N49 52 42 W97 29 48 (10NM WSW A/D) at Beaudry Provincial Park. Hi ints lgt oprg dusk-09Z± from hotel roof at N49 49 19 W97 09 10 (vicinity ZHT/FORKS NDB 0.7NM SW extended centerline Rwy 31). Beams projecting upward. Hi ints lgt may create tempo effects to vision.

WINNIPEG CENTRE (204-983-8338) CZWG

118.0 **118.0** (FL280 & below) 119.5 **119.5** (FL230 & below) **119.7** (FL290 to FL350) 119.9 **119.9** (FL230 & below) **120.5** (FL360 & above) 121.0 **121.0** (FL230 & below) 134.4 **134.4** (FL280 & below) 349.6 **349.6** (FL280 & below)
Big Trout Lake 135.15 **135.15** (FL280 & below)
Brandon 132.25 **132.25** (FL280 & below)
Broadview **132.9** (FL290 & above)
Churchill 134.6 **134.6** (FL280 & below)
Dryden 132.2 **132.2** (FL280 & below)
Gillam 134.650 **134.650** (FL280 & below)
Island Lake 132.825 **132.825** (FL280 & below)
Kenora **124.0** (FL360 & above) **225.2** (FL360 & above)
La Ronge 126.4 **126.4** (FL280 & below)
Lloydminster 132.375 **132.375** (FL280 & below)
Lynn Lake 135.05 **135.05** (FL280 & below)
Marathon 134.075 **134.075** (FL280 & below)
Norway House 135.1 **135.1** (FL280 & below)
Ogoki Post 135.475 **135.475** (FL280 & below)
Peawanuck 133.95 **133.95** (FL280 & below)
Prince Albert 133.9 **133.9** (FL280 & below)
Red Lake **134.175** (FL290 to FL350) 135.325 **135.325** (FL280 & below)
Regina 120.1 **120.1** (FL280 & below) 123.8 **123.8** (FL280 & below) **124.3** (FL290 & above)
Saskatoon **133.1** **135.775** (FL290 & above) 134.325 **134.325** (FL280 & below)
Stony Rapids 124.475 **124.475** (FL280 & below)
Swift Current 132.8 **132.8** (FL280 & below) **134.975** (FL290 & above)
Terrace Bay **133.7** (FL290 to FL360)
The Pas 135.625 **135.625** (FL280 & below)
Thompson 133.15 **133.15** (FL280 & below)
Thunder Bay 132.125 **132.125** (FL280 & below) **133.25** (FL370 & above)
135.225 (FL290 to FL360) **297.6** (FL370 & above)
Yorkton 132.525 **132.525** (FL280 & below)

WINNIPEG FIC - RCO

For a list of Winnipeg RCOs and map, see Planning Section under FISE RCOs.