

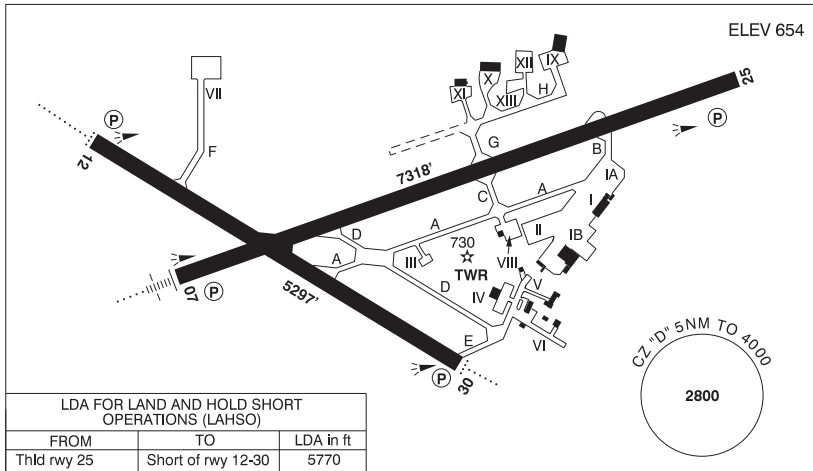
**CANADA FLIGHT SUPPLEMENT / GPH 205**

Effective 0901Z 12 August 2021 to 0901Z 7 October 2021

**B1086 AERODROME/FACILITY DIRECTORY**

**THUNDER BAY ON**

**CYQT**



<b>REF</b>	N48 22 19 W89 19 18 Adj SW 4°W (2014) UTC-5(4) Elev 654' A5001 A5008 LO4 HI4 T2 CAP
<b>OPR</b>	Thunder Bay Intl Apts Authority Inc (TBIAAI) 807-473-2600 Cert
<b>PF</b>	A-1,2,3,6,7 C-4,5
<b>CUST</b>	AOE/40 888-226-7277 13-05Z‡
<b>FLT PLN</b>	<p><b>FIC</b> Winnipeg 866-WXBRIEF (Toll free within Canada) or 866-541-4103 (Toll free within Canada &amp; USA)</p> <p><b>WX</b> METAR H24. TAF H24, issue times: 02, 08, 14, 20Z. WxCam</p>
<b>SERVICES</b>	<p><b>FUEL</b> 100LL, JA-1 (FSII avbl), HPR 1030-0330Z‡</p> <p><b>OIL</b> All &amp; Turbo 35</p> <p><b>S</b> 1,2,3,4,5,6,7</p> <p><b>ARFF</b> DESIGNATED CAT 6 1100-0615Z‡ O/T call out chg</p> <p><b>SUP FL</b> LHOX</p> <p><b>JASU</b> CE14</p> <p><b>PVT ADV</b> Thunder Bay Flight Refuelling (World Fuel Services) 123.2 1030-0330Z‡ O/T 807-577-1178; Innotech-Execaire Aviation (Shell) 122.85 1030-0330Z‡ O/T 807-475-5915</p> <p><b>MIL CON</b> Maintair Aviation Services (Shell) 807-475-5915</p>

## CANADA FLIGHT SUPPLEMENT / GPH 205

Effective 0901Z 12 August 2021 to 0901Z 7 October 2021

AERODROME/FACILITY DIRECTORY B1087

### THUNDER BAY ON (Cont'd)

CYQT

<b>RWY DATA</b>	Rwy 07(074°)/25(254°) 7318x200 ASPH Rwy 12(125°)/30(305°) 5297x150 ASPH
<b>RWY CERT</b>	Rwy 07 RVR 1200(1/4sm)/Rwy 25 RVR 1200(1/4sm) AGN IV Rwy 12 RVR 1200(1/4sm)/Rwy 30 RVR 1200(1/4sm) AGN IIIB
<b>TWY CERT</b>	Twy: A, C, D AGN IIIB
<b>TWY</b>	Twy E (NE of D) uncontrolled. Twy F extends for 173' then changes to apron VII. Private, uncontrolled beyond hold line. Twy H clsd W of Apron XI. Private.
<b>APRON</b>	Apron I rstd to sked commercial air carrier by stand assignment only fr TBIAAI. Acft shall not taxi between ATB and pushed back acft. All sked acft shall be directed into prkg posn by Marshalling Services. Taxiing acft to remain on taxilanes. Uncontrolled. Apron II itinerant acft prkg. Uncontrolled. Aprons III, IV, VII, IX, X, XI & XII private and uncontrolled. Aprons V, VI & VIII uncontrolled.
<b>RCR</b>	Opr 11-05Z± O/T 2 hrs PN, CRFI, PLR/PCN
<b>LIGHTING</b>	07-AN (TE HI) P2, 25-(TE HI) P2, 12-AD AS(TE ME) P2, 30-AD(non-std 1700') AS(TE ME) P2
<b>COMM</b>	<p><b>RCO</b> Winnipeg rdo 122.375 (FISE) 126.7 (bcst)</p> <p><b>ATIS</b> 128.8 11-04Z±</p> <p><b>GND</b> 121.9 11-04Z±</p> <p><b>TWR</b> 118.1 (E) 11-04Z± (emerg only 807-473-5252) Admin/Supervisor 807-474-4245</p> <p><b>MF</b> rdo 118.1 (E) 04-11Z± 5NM 4000 ASL (CAR 602.98) (emerg only 807-473-4311)</p> <p><b>ARR</b> 119.2</p> <p><b>DEP</b> 119.2</p> <p><b>PAL</b> Winnipeg Ctr 132.125</p>
<b>NAV</b>	<p><b>NDB</b> QT 332 (M) N48 20 47 W89 26 02 SUPERIOR ZQT 263 (L) N48 23 45 W89 13 32</p> <p><b>VOR/DME</b> YQT 114.1 Ch 88 N48 15 14 W89 26 15 (1641')</p> <p><b>TACAN</b> McKAY UAU 112.5 Ch 72 N48 22 24 W89 19 44 (665') TACAN unavbl in SE SECTOR beyond 20NM below 7000'.</p> <p><b>ILS</b> IQT 109.5 (Rwy 07) RVR LOC reliable only within 10° either side of centreline.</p>
<b>PRO</b>	<p>Rgt hand circuits Rwy 25 &amp; 30 (CAR 602.96). See CAP for NOISE &amp; NIGHT restrictions.</p> <p><b>ATS PPR REQUIREMENTS:</b> Ctc Winnipeg ACC 204-984-5979 for the following: - IFR tng and Photo Survey within Thunder Bay Class E Transponder Airspace - VFR tng conducting simulated holds and inst apch</p> <p><b>VFR TRAINING PROCEDURES</b> - See VTPC</p>
<b>CAUTION</b>	Heli flood lgts 30 AGL N side of apron II. Lgtd obst 746 ASL 0.5NM NE Thld 25 (intxn Thunder Bay Express Way & Arthur street). Terrain rises abruptly to 1600 ASL 2NM SE of A/D. Extv flt tng within 35NM W & N of CYQT CZ to 6000 ASL. Extv bird and wildlife activity in vic of A/D. Railroad tracks SW of A/D in close proximity.

### THUNDER BAY FSS - RCO

**Island Lake** 122.2 (RAAS) (N53 51 W94 39)  
**Pickle Lake** 122.2 (RAAS) 11-02Z (N51 27 W90 13)