

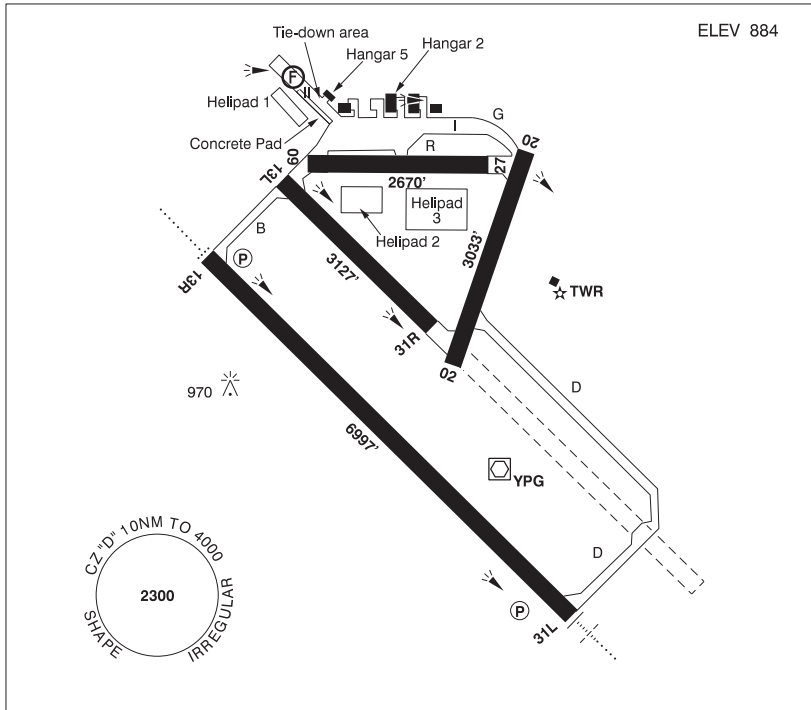
**CANADA FLIGHT SUPPLEMENT / GPH 205**

Effective 0901Z 12 August 2021 to 0901Z 7 October 2021

**B828 AERODROME/FACILITY DIRECTORY**

**PORTAGE LA PRAIRIE / SOUTHPORT MB**

**CYPG**



<b>REF</b>	N49 54 11 W98 16 26 4S 4°E (2016) UTC-6(5) Elev 884' VTA A5007 LO4 HI4 CAP
<b>OPR</b>	Southport Aerospace Centre Inc 204-428-6030 14-23Z± exc stat hols, O/T by NOTAM. Mil fit ops 204-428-2522 Cert
<b>PF</b>	B-1,2 (ltd hrs), 5,7 C-2,3,4,6
<b>FLT PLN</b>	<p><b>FIG</b> Winnipeg 866-WXBRIEF (Toll free within Canada) or 866-541-4103 (Toll free within Canada &amp; USA)</p> <p><b>WX</b> 204-428-2444 ltd hrs (see opr). O/T for mil only JMC 1-800-WXMETEO (996-3836). METAR dur fit ops. TAF dur fit ops, issue times depending on mil requirements. AUTO (see COMM).</p>
<b>SERVICES</b>	Call out chg may be levied for one or more svcs
<b>FUEL</b>	100LL, JA-1 (FSII avbl), SP 14-04Z± Mon-Fri exc hols. Ctc Tran Svcs 204-428-2435 O/T PN 204-872-0570
<b>OIL</b>	80, 100, Turbo Oil 2380
<b>ARFF</b>	PARTICIPATING CAT 2 1400-2300Z Mon-Fri exc hols, O/T 204-870-2004
<b>S</b>	1,4,5,6
<b>PVT ADV</b>	Tran Svcs 123.0

CANADA FLIGHT SUPPLEMENT / GPH 205

Effective 0901Z 12 August 2021 to 0901Z 7 October 2021

AERODROME/FACILITY DIRECTORY B829

PORTAGE LA PRAIRIE / SOUTHPORT MB (Cont'd)

CYPG

<b>RWY DATA</b>	Rwy 13R(130°)/31L(310°) 6997x148 ASPH Rwy 13L(130°)/31R(310°) 3127x150 ASPH Rwy 09(085°)/27(265°) 2670x98 ASPH Rwy 02(015°)/20(195°) 3033x150 ASPH
<b>RWY CERT</b>	Rwy 13R/31L AGN IIIA Rwy 13L/31R AGN II Rwy 09/27 AGN II Rwy 02/20 AGN IIIA
<b>TWY CERT</b>	Twy R AGN II
<b>HELI DATA</b>	FATO 87' x 87' CONC Helipad 1: 607' x 148' turf/snow Helipad 2: 492' x 197' turf/snow Helipad 3: 656' x 328' turf/snow
<b>APRON</b>	No itinerant acft on Apron I. Itinerant acft prkg S of hg 5 on Apron II. Jet and large acft prkg on concrete pad on S side of Apron II. Heli FATO on S side of Apron II. Light acft use tie-downs on N side of Apron II. Parking Fees.
<b>RCR</b>	Opr CRFI, Mil Flt Ops 204-428-2444, 14-23Z†, exc stat hols O/T by NOTAM. PLR/PCN ctc Opr. Rwy 09/27 wt rstd to 15,500 lbs. Rwy 13R/31L PLR 7.3. Call out chgs.
<b>LIGHTING</b>	02-(TE ME), 20-(TE ME), 13R-AO(TE HI) P2, 31L-AN(TE HI) P2 ARCAL-126.2 type K
<b>COMM</b>	<b>ATIS</b> 120.85 14-23Z† Mon-Fri exc hols <b>GND</b> 121.7 14-23Z† Mon-Fri exc hols <b>TWR</b> 126.2 (V) 14-23Z† Mon-Fri exc hols <b>ATF</b> tfc 126.2 23-14Z† Mon-Fri, H24 Sat, Sun & hols 10NM 4000 ASL <b>TML</b> Winnipeg 121.0 <b>MIL</b> 3 CFFTS Ops 204-428-4139 <b>AUTO</b> 123.175
<b>NAV</b>	All Nav aids Unmonitored when Twr clsd.
<b>NDB</b>	PORTAGE PG 353 (L) N49 50 30 W98 10 47 Pvt
<b>VOR/DME</b>	PORTAGE YPG 114.6 Ch 93 N49 53 59 W98 16 02 (902') Pvt
<b>ILS</b>	IPG 109.7 (Rwy 31L) Pvt
<b>PRO</b>	Rgt hand circuits Rwy 13R, 20, 27 & 31R (CAR 602.96). Circuit alt 02/20, 09/27 & 13L/31R 1900 ASL, 13R/31L 2500 ASL. Arr ctc twr 126.2 prior to "D" CZ. VFR circuits & multiple IFR apch for tng by itinerant acft may be rstd due lcl tfc. Extv heli tng NE quad CZ within 5NM. Avoid satellite fld (Grabber Green) N49 54 52 W98 09 38, 4NM NE (see VTPC) or cross at 2500 ASL or above.
<b>HELI</b>	Dep & arr FATO 1 on Apron II as directed by twr depicted rtes (see VTPC). Not above 1400 ASL til clear of circuits.
<b>CAUTION</b>	Extv flt tng in the lcl area. Hrs of ops may be extended by NOTAM. Ocsl extv ngt flt tng activity. Attempt ctc with Southport twr 126.2 prior to entering CZ. Lgtd twr 1010 ASL (150 AGL) aprx 0.9NM N of A/D.