

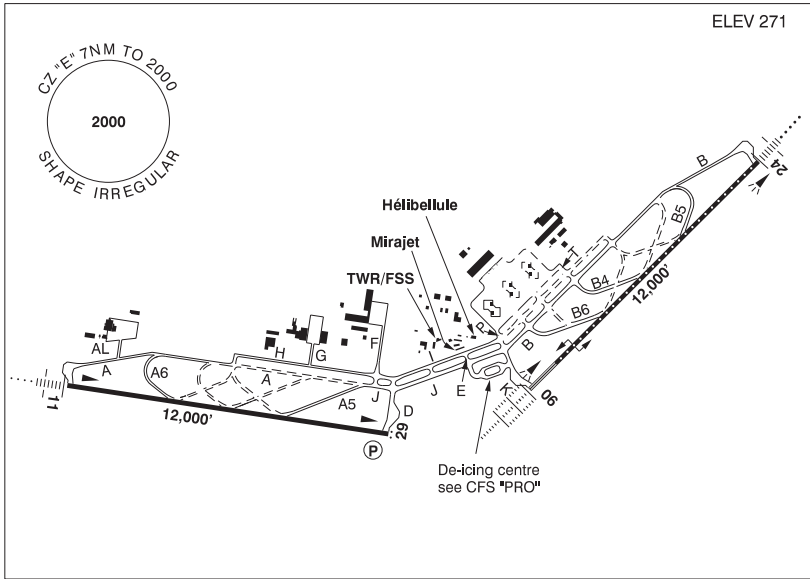
CANADA FLIGHT SUPPLEMENT / GPH 205

Effective 0901Z 12 August 2021 to 0901Z 7 October 2021

B672 AERODROME/FACILITY DIRECTORY

MONTRÉAL INTL (MIRABEL) QC

CYMX



REF	N45 40 47 W74 02 19 21NW 15°W UTC-5(4) Elev 271' VTA A5002 LO6 LO7 LO8 HI5 T2 CAP OC
OPR	Aéroports de Montréal 514-633-3223 Cert Ldg fees
PF	C-1,2,3,5,6 D-4
CUST	AOE/15 13-01Z‡ PAX and crew only Hélibellule FBO 24 hrs PN 450-476-1000 Fax 450-476-1002 cargo 13-22Z‡ Mon-Fri (exc hols) 450-476-3168.
FLT PLN	(bil)
FIC	Québec 866-GOMÉTÉO or 866-WXBRIEF (Toll free within Canada) or 866-541-4105 (Toll free within Canada & USA)
ACC	Montréal 514-633-3211 or 800-633-1353. All Flt Plns, IFR tng flts PPR. Flt Plns by Fax at 514-633-2877 & include phone numbers where pilot can be reached prior to dep.
WX	METAR H24. TAF H24, issue times: 00, 06, 12, 18Z.
SERVICES	
FUEL	JA-1, 100LL. JA-1 avbl with Swissport Canada Fuel Services Inc 514-601-8403 or Hélibellule FBO. 100LL avbl with Hélibellule FBO.
S	2
SUP FL	D & A-ice 122.575 Sun from 07Z‡, avbl O/R only 1 hr PN
MIL ADV	Tran acct to L3Harris Technologies Inc. ctc svcg (123.25)
PVT ADV	Aeromag 2000 122.575 450-476-1850 Hélibellule FBO 122.325 450-476-1000 12-22Z‡ Mon-Fri, 13-22Z‡ Sat-Sun. O/T call out chg.
MIL CON	Hélibellule 450-476-1000

CANADA FLIGHT SUPPLEMENT / GPH 205

Effective 0901Z 12 August 2021 to 0901Z 7 October 2021

AERODROME/FACILITY DIRECTORY B673

MONTRÉAL INTL (MIRABEL) QC (Cont'd)

CYMX

RWY DATA	Rwy 06(060°)/24(240°) 12,000x200 CONC Rwy 11(113°)/29(293°) 12,000x200 concrete Rwy 29 down 0.65% first 3412' RAG: Rwy 06/24 (Thld 06) BAK 12 (1358'). NOTAM issued when cable is up. Cable availability 12-21Z† Mon-Fri (exc hols). 24 hrs PN. Fees applicable, 450-476-4490 or 514-883-6989. All acft requiring cable 2 hrs PN to L3Harris Technologies Inc. 450-476-4455.
RWY CERT	Rwy 06 RVR 600/Rwy 24 RVR 1200(1/4sm) AGN V Rwy 11/29 AGN V
TWY	All twys are 23m with 13m shoulders. Twy AL, G, P & T: Uncontrolled
APRON	Main & Cargo Aprons: Uncontrolled; broadcast intention on 122.4 before maneuvering.
RCR	Opr 07-17Z† Mon-Fri, 08-17Z† Sat-Sun. O/T call out chg.
LIGHTING	06-AL(TE HI CL TDZL), 24-AN(TE HI CL), 11-AN(TE HI), 29-AS(TE HI) P3
COMM	(bil)
RADIO	Mirabel 119.1 (E) 03-11Z† (emerg only 450-476-3141)
ATIS	(English) 125.7 450-476-3031; (French) 126.1 450-476-3095
APRON ADV	tfc 122.4
GND	121.8 11-03Z†
GND ADV	121.8 03-11Z† (emerg only 450-476-3141)
TWR	119.1 11-03Z† (emerg only 450-476-3142)
MF	rdo 119.1 03-11Z† (emerg only 450-476-3141) Shape irregular (see Mirabel VTPC) 7 NM 2000 ASL and fr 7-11NM btwn 1500-2000 ASL (CAR 602.98)
ARR	Montréal 124.65 268.3
DEP	Montréal 124.65 268.3
VFR ADV	Montréal 134.15
NAV	
NDB	JOLY ZMM 266 (L) N45 40 51 W74 11 04 HERMAS ZMR 272 (L) N45 37 29 W74 05 17 JANVIER ZMX 317 (L) N45 44 30 W73 55 14
ILS	IKP 111.3 (Rwy 06) RVR LOC reliable only within 10° either side of centreline; IIT 111.7 (Rwy 24) RVR LOC reliable only within 10° either side of centreline; IJX 110.9 (Rwy 11) RVR LOC reliable only within 10° either side of centreline

CANADA FLIGHT SUPPLEMENT / GPH 205

Effective 0901Z 12 August 2021 to 0901Z 7 October 2021

B674 AERODROME/FACILITY DIRECTORY

MONTRÉAL INTL (MIRABEL) QC (Cont'd)

CYMX

PRO

TWR in operation from 06h00 to 22h00 local time (11-03Z±)

Control Zone Class C and Transition Areas Class C when TWR in operations.

Control Zone Class E and Transition Areas Class E when RADIO in operations

RADIO only 03-11Z±

Transponder Mode C reqrd within Transition Areas Class E and within Class E Control Zone.

Right hand circuits Rwys 24 and 11 (CAR 602.96)

Twy I eastbound only. Twy J westbound only.

In accordance with CAR 602.96(3)(d), the pilot in command of an aircraft taxiing for departure during ILS CAT II ops shall not taxi further than the ILS CAT II holding point without a valid ATC IFR clearance.

The Minister has authorized specific operating restrictions regarding communications intended for the MF, as well as the introduction of a Ground Advisory frequency (GND ADV) pursuant to CARs 602.97 (2), 602.98 (1) and 602.99.

Departure procedure: Prior to taxi for departure; contact GROUND ADV on 121.8 for clearance and initial advisory information. After receiving initial advisory information, GND ADV will initiate communication transfer to RADIO on 119.1 prior to entering the runway/departure surface. Pilots are required to ascertain that there is no likelihood of collision with another aircraft or a vehicle prior to departure as stated in CAR 602.96 2a) and b).

Arrival procedure: After exiting the runway/arrival surface and reporting clear on the radio frequency, pilots will be directed to contact GROUND ADV on 121.8 for ground traffic and taxiing information before entering the taxiway.

TWR and RADIO 24hrs

After landing Rwy 06, left turns on Twy B6 or B4 not authorised for jet acft 24m (79') wingspan or more.

Acft with wingspan of 65m (213') or over must park at gates 111 or 116 and de-ice at gate 116 only. Antonov 225 must park and de-ice at gate 116 and must never use Twys H, I or B between B4 and the holding bay of Rwy 24. Follow TWR/FSS instructions.

De-icing guiding lights procedure: Direction lgts panel; when red, hold posn. When green, follow direction of arrows. Prkg lgts panel; when green taxi straight ahead til turns red.

De-icing centre procedure:

1. **1 hr prior to push back**, ctc AEROMAG on 122.575 or 450-476-1850, with de-icing type.
2. **Immediately prior to push back**, check waiting time.
3. On Twys J or K, hold short of the de-icing pad and ctc AEROMAG 122.575.
4. Follow AEROMAG instructions and guidelines to the South de-icing bay and confirm "**brakes set**", acft configured and engines at idle.
5. When de-icing is completed, **before moving acft** wait for AEROMAG instructions.
6. Exiting de-icing pad, on AEROMAG instructions, ctc Mirabel twr/rdo on 119.1.

CANADA FLIGHT SUPPLEMENT / GPH 205

Effective 0901Z 12 August 2021 to 0901Z 7 October 2021

AERODROME/FACILITY DIRECTORY B675

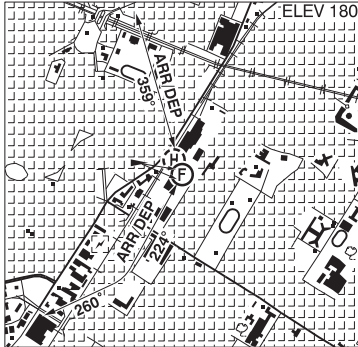
MONTRÉAL INTL (MIRABEL) QC (Cont'd)

CYMX

PRO (Cont'd)	<p>Distance between parking centreline and obstacles:</p> <ul style="list-style-type: none"> - With lamp post on right side: 40m - With bldg on left side: 40.5m <p>Low Visibility Procedures: See CAP</p> <p>Airspace: Standardized use of freq 123.2 in class G airspace E of control zone.</p> <p>Training: VFR circuits PPR 1-800-633-1353 during TWR hrs of ops.</p> <p>Apron: All acft clockwise except acft with wingspan of 65m (213') and over counterclockwise to access gates 111 & 116.</p> <p>Mirabel aprt is intended for scheduled cargo and gen avn. For gen avn svcs PN with Hélibellule (see PVT ADV).</p> <p>Fighter aircraft only: To reduce the risk of debris ingestion for ops on Rwy 06 & 24, always use the following twys: On departure: Twys A, H, I, K (backtrack rwy if departing Rwy 24). On arrival: Twys K, J, F, H and A (backtrack rwy if landing Rwy 06). For ops on Rwy 11/29 for tkof Rwy 29 always taxi via: Twy A and backtrack rwy to Thld 29.</p> <p>VFR Codes: Refer to MONTRÉAL VTPC section VFR FLIGHTS IN MONTRÉAL/TRUDEAU, MONTRÉAL/ST-HUBERT, MONTRÉAL/MIRABEL AND MONTRÉAL TERMINAL CLASS C AIRSPACE.</p>
CAUTION	Bell Helicopter testing from 1300 to 2000 ASL above CYR601 and CYR624

MONTRÉAL / KRUGER QC (Heli)

CSN2

REF	N45 30 25 W73 38 09 15°W (2014) UTC-5(4) Elev 180' VTA A5002	
OPR	Kruger Inc 514-737-1131 or 514-346-1288 Cert PPR	
FLT PLN FIG	Québec 866-GOMÉTÉO or 866-WXBRIEF (Toll free within Canada) or 866-541-4105 (Toll free within Canada & USA)	
HELI DATA	FATO 64' x 64' GRASS Safety Area 85' x 85' Parking Pad: 52' dia GRASS Max heli overall length 43'	
COMM TWR	Montréal 119.3 119.9	
PRO	<p>Arr/dep curved fit path 224° to 260° fr hover area, slope 16% (H2). Arr/dep 359° fr hover area, slope 16% (H2). Parking pad located N (353°) fr hover area. (CAR 602.96)</p> <p>VFR Codes: In order to minimize delays, ATC freq congestion and for better airspace management, as well as to improve safety, ctc the Montreal ACC at 877-YUL-CODE (877-985-2633) to provide ATC with info pertaining to your fit to obtain your transponder code at least 30 min prior to a flight into Montreal Class C airspace.</p>	
CAUTION	Trees surrounding the hover area and parking pad.	