

CANADA FLIGHT SUPPLEMENT / GPH 205

Effective 0901Z 12 August 2021 to 0901Z 7 October 2021

B92 AERODROME/FACILITY DIRECTORY

BRAMPTON-CALEDON ON (Cont'd)

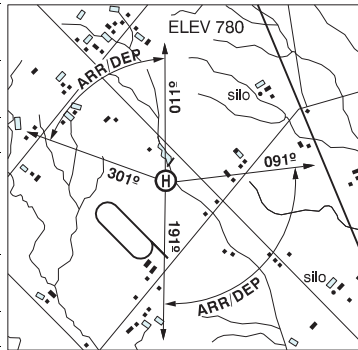
CNC3

PRO	Call opr prior to ARCAL ops when win wx might affect rwy cond. Due to close proximity to Toronto/Lester B. Pearson Intl., there may be periods when ATC will be unable to approve use of the inst apch pro. Helicopters arr/dep via active rwy then taxi to/fr designated helicopter area btwn Golf & Bravo at Alpha. Act with main gear track 18° and over use Rwy 15/33 then turn around bay and backtrack to twy D and apron.
CAUTION	Painted & lgtd twr 1696 ASL (400 AGL) aprx 4NM WNW. Narrow twys (18') exc twy D (24').

BRAMPTON (NATIONAL "D") ON (Heli)

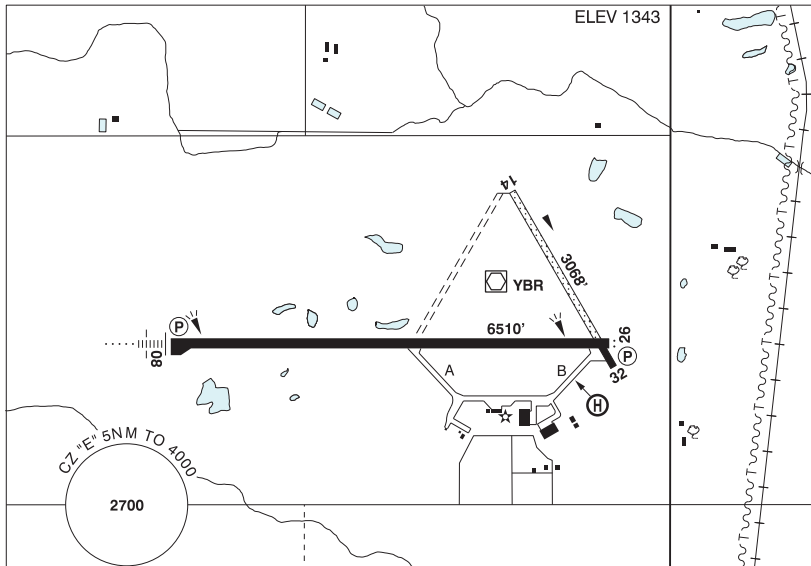
CPC4

REF	N43 50 00 W79 42 03 8NE 10°W UTC-5(4) Elev 780' VTA A5000
OPR	National Helicopter Inc. 905-893-2727 Reg PPR
PF	B-1 C-2,3,4,5,6
FLT PLN	FIG London 866-WXBRIEF (Toll free within Canada) or 866-541-4104 (Toll free within Canada & USA)
HELI DATA	65' x 65' CONC/ASPH 85' x 85' Rstd max heli length 43.3'
LIGHTING	RY (FH)
PRO	Arr/dep btwn 301°-011° & 091°-191° fr heli.



BRANDON MUNI MB

CYBR



REF	N49 54 36 W99 57 08 4N 6°E (2013) UTC-6(5) Elev 1343' A5007 LO4 HI4 CAP
------------	---

CANADA FLIGHT SUPPLEMENT / GPH 205

Effective 0901Z 12 August 2021 to 0901Z 7 October 2021

AERODROME/FACILITY DIRECTORY B93

BRANDON MUNI MB (Cont'd)

CYBR

OPR	Muni 204-729-2166 Cert Ldg fees
PF	A-1 C-2,3,4,5,6
CUST	AOE/15 888-226-7277 15-23Z‡
FLT PLN	
FIC	Winnipeg 866-WXBRIEF (Toll free within Canada) or 866-541-4103 (Toll free within Canada & USA)
WX	METAR H24. TAF H24, issue times: 00, 06, 12, 18Z.
SERVICES	Call out chg may be levied for one or more svc
FUEL	100LL, JA-1 (FSII avbl), SP, HPR 14-23Z‡ O/T call out chg
OIL	All
S	1,2,3,4 (ltd),5,6
SUP FL	D-Ice (avbl by truck)
JASU	CE16
PVT ADV	Brandon Flight Centre 122.95 204-728-7691
RWY DATA	Rwy 08(085°)/26(265°) 6510x150 asphalt Rwy 14(144°)/32(324°) 3068x60 treated gravel/asphalt First 438' Rwy 32 asphalt
RWY CERT	Rwy 08/26 AGN IIIB Rwy 14/32 AGN II
APRON	No power turns permitted on tml apron. Tml apron prkg rstd for sked t/c only 1800-1930Z‡.
RCR	Opr Ltd win maint Rwy 14/32. Rwy 14/32 rstd to acft under 12,000 lbs. A/D maint 12-02Z‡ Mon-Fri, 14-00Z‡ Sat-Sun O/T 1 hr PN for AMSCR and CRFI. Call out charge may be levied. 204-729-7026.
LIGHTING	08-AN(TE HI) P2, 26-AS(TE HI) P2
COMM	
RADIO	122.1 (E) (emerg only 204-728-7169)
RCO	Winnipeg 123.275 (FISE) 126.7 (bcst)
MF	rdo 122.1 5NM 4000 ASL (CAR 602.98)
ARR	Winnipeg Ctr 132.25
DEP	Winnipeg Ctr 132.25
PAL	Winnipeg Ctr 132.25
VDF	122.1
NAV	
NDB	BRANDON BR 233 (L) N49 54 29 W100 04 24
VOR/DME	YBR 113.8 Ch 85 N49 54 36 W99 56 44 (1368')
DME	IBR 110.1 Ch 38 N49 54 31 W99 57 43 Pvt
ILS	IBR 110.1 (Rwy 8) Pvt
PRO	Rgt hand circuits Rwy 26 (CAR 602.96). Periodic extv glider ops to 4000 MSL. Gliders & tow acft opr fr infield S of Rwy 08/26. Glider & tow acft circuits S of Rwy 08/26. Rgt hand circuits Rwy 32 (CAR 602.96). Gliders & tow acft opr fr infield W of Rwy 14/32. Glider & tow acft circuits W of Rwy 14/32. Acft inbd fr the S may be requested to rpt crossing the Trans Canada Hwy.
CAUTION	Hydro P-lines 154 AGL unlgtd 9000' E of Thld 26. Ocsl parajump activity within 1.5NM of A/D to 14,000 ASL. Hi ints lgt oprg dusk to dawn fr hotel roof at N49 49 56 W99 57 40 (4.7NM S A/D). Beams projecting upward. Hi ints lgt may create temporary effects to vision.

BRANDON FSS – RCO

Dauphin 122.3 (RAAS) 12-02Z‡ (N51 06 W100 04)