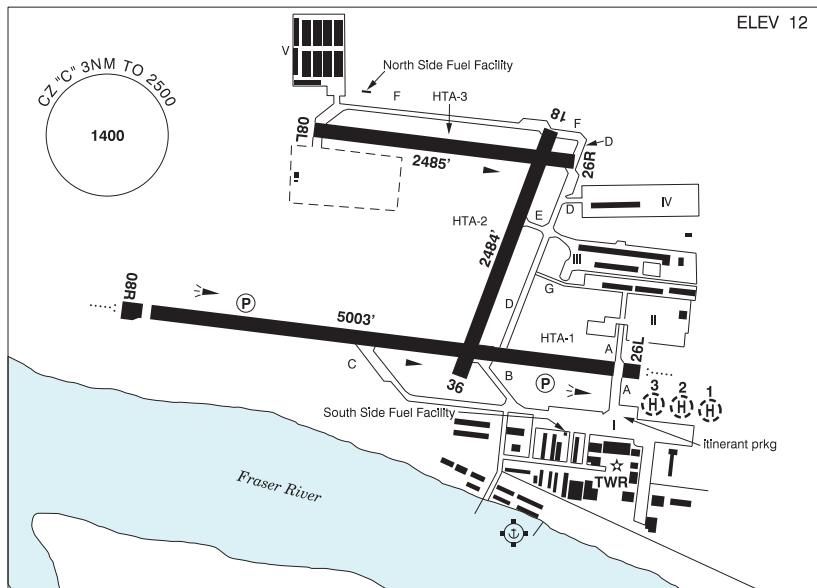


BRITISH COLUMBIA

AERODROME / FACILITY DIRECTORY

PITT MEADOWS BC

CYPK



| | |
|-----------------|---|
| REF | N49 12 58 W122 42 48 1SW 17°E (2013) UTC-8(7) Elev 12' VTA A5004 LO2 T1 CAP |
| OPR | Pitt Meadows Aprt Society 604-465-8977 Cert |
| PF | A-1,2,3,7 C-4,5,6 |
| CUST | AOE/CAN |
| FLT PLN | <p>FIC Kamloops 866-WXBRIEF (Toll free within Canada) or 866-541-4101 (Toll free within Canada & USA)</p> <p>ACC Vancouver IFR 604-586-4590/4591; IFR tng flts PPR ctc 604-586-4592</p> <p>WX LWIS H24 LAWO 15-07Z‡</p> |
| SERVICES | <p>FUEL 100LL (Cardlock) Helis not auth South Side Fuel Facility unless dollied, JA-1 (by truck)</p> <p>OIL All</p> <p>S 1,2,3,4,5</p> <p>PVT ADV Integrity Flight Support (by truck) 778-808-3312 1530-0100Z‡ Mon-Fri exc hols, O/T call out chg; Aeroclub of BC (Cardlock) N & S Side Fuel Facilities 604-465-0446.</p> |
| RWY DATA | <p>Rwy 08R(080°)/26L(260°) 5003x100 ASPH Thld 08R displ 197' Thld 26L displ 164'</p> <p>Rwy 08L(080°)/26R(260°) 2485x75 ASPH</p> <p>Rwy 18(185°)/36(005°) 2484x75 ASPH</p> <p>RESA: 08R/26L 492'</p> |
| RWY CERT | <p>Rwy 08R/26L AGN IIIA</p> <p>Rwy 08L/26R AGN I</p> <p>Rwy 18/36 AGN I</p> |
| TWY CERT | Twy: D, E, F, G AGN I |
| APRON | Apron I Itinerant prkg N of ATB, E of Twy A (see sketch). Apron III and V Pvt. |
| RCR | Twr 604-465-9723 PLR/PCN Rwy 08L/26R no win maint |

BRITISH COLUMBIA

AERODROME / FACILITY DIRECTORY

PITT MEADOWS BC (Cont'd)

CYPK

| | |
|------------------|---|
| HELI DATA | Parking Pad 1 & 2: TLOF 68' dia ASPH Max heli overall length 57'. Parking Pad 3: TLOF 50' dia ASPH Max heli overall length 42'. |
| LIGHTING | 08R-AO(TE ME) P2, 26L-AO(T ME) P2, 18-(TE ME), 36-(TE ME), 06-14Z± O/T ARCAL-126.3 key mic 3 times within 5 sec for 26L, & 5 times within 5 sec for 08R & 7 times within 5 sec for 18-36 for 15 min duration lgt. |
| COMM | <p>ATIS 125.0 1-877-517-2847 15-07Z±</p> <p>GND 123.8 15-07Z±</p> <p>TWR Pitt 126.3 (V) 15-07Z± (emerg only 604-465-9723)</p> <p>MF tfc 126.3 07-15Z± 3NM 2500 ASL (CAR 602.98)</p> |
| NAV | VOR YPK 112.4 N49 12 57 W122 42 54 (44') |
| PRO | <p>Rgt hand circuits Rwy 08R, 18 & 26R (CAR 602.96) circuit hgt 1000 ASL. Seaplane circuits 500 ASL on S side of Fraser River. Procedures for crossing the southern Strait of Georgia within Tml Class C airspace refer to Vancouver Intl, VTPC for Crossing the Southern Strait of Georgia.</p> <p>Due to reduced wing tip clearance, acft total wingspan exceeding 60' are recommended to use Twy A when taxiing to/fr Apron I.</p> <p>ATS REQUIREMENTS: All VFR acft arriving, departing or transiting the Vancouver or Victoria Tower Class C or D airspace require a transponder code. - All acft departing Vancouver or Victoria Intl (including Water Aerodrome) call Kamloops FIC at 866-541-4101 or PAC RDO 122.5 or 123.15 for code assignment at least 30 min prior to flight or file a VFR Flight Plan/Flight Itinerary. - All acft arriving Vancouver Intl (including Water Aerodrome) or transiting Vancouver or Victoria Control Zones obtain a code from one of the following ATS units: Vancouver Harbour, Nanaimo, Victoria Harbour, Boundary Bay, Langley, Abbotsford or Pitt Meadows, or call Kamloops FIC at 866-541-4101 or PAC RDO 122.5 or 123.15. - All acft arriving Victoria Intl from a non NAV CANADA site call Kamloops FIC at 866-541-4101 or PAC RDO 122.5 or 123.15 for code assignment at least 30 minutes prior to flight or file a VFR Flight Plan/Flight Itinerary.</p> <p>NIGHT RESTRICTIONS: - Circuit tng Rwy 08R & 08L not auth 05-15Z± PPR. - Circuit tng Rwy 26L, 26R, 18/36 not auth 06-15Z± PPR. - Turbojet, turboprop and turboprop night circuit tng PPR. - All acft avoid overflight of noise-sensitive areas, unless unable due to crosswind limitations, operational/safety considerations, or as directed by ATC.</p> <p><u>When Tower Closed:</u> - Rwy 08R/18/26L Dep: Acft climb rwy hdg to 1000 ASL BPOC. Best Rate of Climb. Avoid fit over built-up areas in downwind and crosswind legs. - Rwy 36 Dep: Left hand circuit. When safe turn left to 1000 ASL BPOC. Best Rate of Climb. Avoid fit over built-up areas in downwind and crosswind legs. - Rwy 08L/26R not to be used when twr is clsd unless rqr'd due to operational/safety considerations.</p> <p>HELI: All Turbine Heli: Continuous circuits prohibited unless approved by APM. - Arr/dep: Avoid low flt over built-up areas, unless directed by ATC. All Apron I arr/dep rqr'd to use marked Apron I heli parking pads 1, 2 and 3 unless prior permission received fr APM.</p> |
| CAUTION | Coyotes in vic of rwy. 160' lit crane 2NM NW of A/D. Quarry blasting ops within 0.6NM radius N49 17 14 W122 39 33 (aprx 4.7NM N of A/D) to 300 AGL. Industrial complex S of 26L apch, do not mistake bldg floodlights for rwy edge lights during low vis conds or ngt ops. |