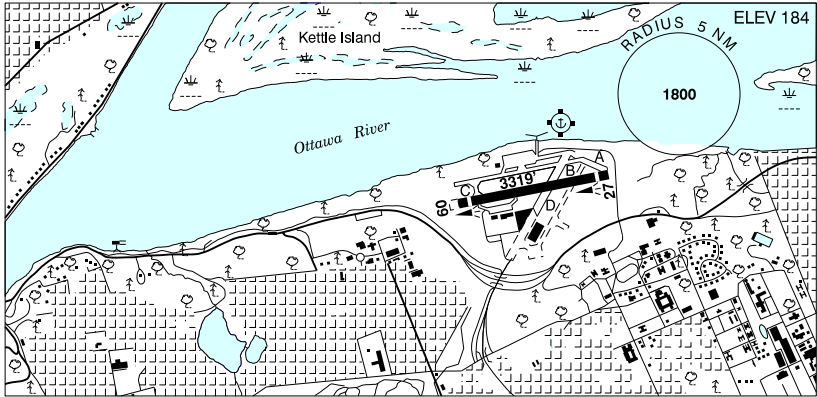


ONTARIO

AERODROME / FACILITY DIRECTORY

OTTAWA / ROCKCLIFFE ON

CYRO



|          |  |
|----------|--|
| REF      | N45 27 38 W75 38 36 Adj NE 13°W (2016) UTC-5(4) Elev 184' A1905 A5000 A5002 LO6 LO7 T2 CAP   |
| OPR      | Rockcliffe Flying Club 613-746-4425 855-759-4425 Fax 613-746-3354 Cert 12Z† to SS & evenings when flying in progress.  |
| PF       | B-1 C-2,3,4,5,6  |
| CUST     | AOE/CAN  |
| FLT PLN  | (bil)  |
| FIC      | Québec 866-GOMÉTÉO or 866-WXBRIEF (Toll free within Canada) or 866-541-4105 (Toll free within Canada & USA)  |
| ACC      | Montreal 514-633-3211 or 800-633-1353, all Flt Plns, IFR tng PPR, Mon-Fri  |
| SERVICES |  |
| FUEL     | 100LL, JA-1 (FSII avbl) 1 HR PN CTC 613-746-4425   |
| OIL      | All  |
| RWY DATA | Rwy 09(092°)/27(272°) 3319x100 ASPH Thld 09 displ 200'. Thld 27 displ 214'.  |
| RWY CERT | Rwy 09/27 AGN II   |
| TWY      | Twy A, B & D rstd day use only   |
| RCR      | Opr Ltd win maint. Rstd to acft 18,000 lbs and under. PPR for acft over 18,000 lbs.  |
| LIGHTING | 09-(TE LO), 27-(TE LO) Ngt thld 249' fr end of Rwy 27 and 1341' fr end of Rwy 09 only 1730' lgtd ARCAL 123.5 type J (see CAUTION)                                |
| COMM     |  |
| RCO      | Québec rdo (Gatineau) 123.375 (FISE)   |
| ATF      | UNICOM ltd hrs O/T tfc 123.5 5NM 3200 ASL excluding Gatineau CZ, Ottawa/Macdonald-Cartier Intl CZ and the airspace that lies within Ottawa TCA class C airspace. |

ONTARIO

AERODROME / FACILITY DIRECTORY

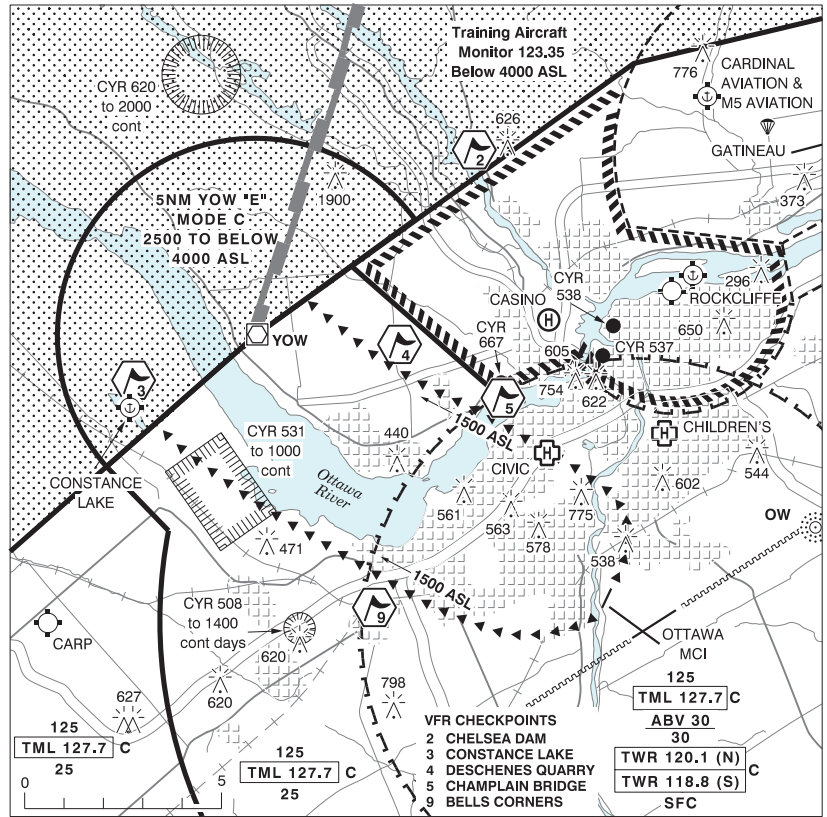
OTTAWA / ROCKCLIFFE ON (Cont'd) CYRO

|         |  |
|---------|--|
| PRO     | <p><b>CIRCUITS:</b> Rgt hand circuits Rwy 27 (CAR 602.96).<br/>As soon as practicable after tkof fr Rwy 09 or 27 turn 20° to the North.</p> <p><b>MUSEUM:</b> Aircraft wishing to park at the Canada Aviation and Space Museum are requested to contact the Rockcliffe Flying Club, by telephone or unicom, for instructions prior to arrival.</p> <p><b>AIRSPACE:</b> VFR FLIGHTS IN OTTAWA CLASS C AND TERMINAL CLASS C AIRSPACE SEE OTTAWA / MACDONALD-CARTIER INTL FOR PROCEDURES.</p> <p><b>VFR Codes:</b> In order to minimize delays, ATC freq congestion and for better airspace management, as well as to improve safety, ctc the Montreal ACC at 866-VFR-CODE (866-837-2633), or the FIC at 1-866-GOMETEO or 1-866-WX BRIEF, to provide ATC with info pertaining to your flt to obtain your transponder code at least 30 min prior to a flight into Ottawa Class C airspace.</p> |
| CAUTION | <p>Sections of North apron breaking up &amp; covered with loose gravel. Extv bird activity. Feb-May and Sep-Nov.</p> <p>Rstd areas CYR537 and CYR538 cont located 1.5NM W. Adjust flt path/altitude to avoid entry. See VTPC.</p> <p><b>ARCAL:</b> Acft arr fr the E or S may not be able to activate ARCAL until aprx 1NM from the aprt. Acft on the ground positioned at the E end of the aprt may not be able to activate ARCAL until positioned closer to the W end of the aprt.</p>   |

ONTARIO

AERODROME / FACILITY DIRECTORY

OTTAWA M.-C.I. WEST VFR ARR/DEP PROCEDURES CHARTS (Cont'd)



OTTAWA M.-C.I. WEST DEPARTURES

| ATIS                                  | CLNC DEL | GND   | TWR   |       | TML   |
|---------------------------------------|----------|-------|-------|-------|-------|
|                                       |          |       | North | South |       |
| English<br>121.15<br>French<br>132.95 | 119.4    | 121.9 | 120.1 | 118.8 | 127.7 |

Unless otherwise instructed by ATC, Contact North Tower on 120.1 when ready

- Bells Corners Departure (Depart Rwy 22), climb rwy hdg to Rideau River remaining north of Rwy 25 centerline at all times. At Rideau River, turn rgt hdg 250, climb to 1300 ASL. At 1300 ASL, continue climb not abv 1500 ASL direct Bells Corners and then to Constance Lake.

\* Contact Ottawa Terminal on 127.7 at Bells Corners.

- Champlain Bridge Departure (Depart Rwy 04), left turn direct Champlain Bridge then to Deschenes Quarry climb not abv 1500 ASL.

\* Contact Ottawa Terminal on 127.7 at the Bridge

- All other VFR acft should anticipate dep Instructions from ATC.