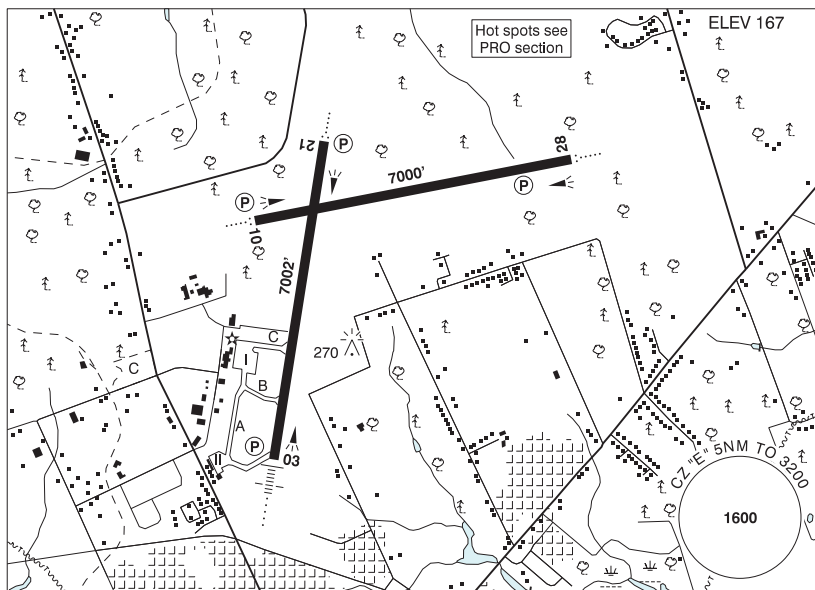


PRINCE EDWARD ISLAND

AERODROME / FACILITY DIRECTORY

CHARLOTTETOWN PE

CYYG



REF	N46 17 21 W63 06 55 3N 18°W (2014) UTC-4(3) Elev 167' A5003 LO8 HI6 CAP OC
OPR	Charlottetown Airport Authority Inc. 902-566-7997 1015-0415Z± O/T PPR 902-394-4168 Cert
PF	A-1,2,3,6,7,8 C-4,5
CUST	AOE/60 (368 with staged off-loading) 888-226-7277 12-04Z±
FLT PLN	<p>FIC London 866-WXBRIEF (Toll free within Canada) or 866-541-4104 (Toll free within Canada & USA)</p> <p>ACC (IFR only) Moncton 506-867-7177 or 866-480-8200.</p> <p>WX METAR H24. TAF H24, issue times: 00, 06, 12, 18Z.</p>
SERVICES	Call out chg may be levied for one or more svcs.
FUEL	100LL 11-01Z± ctc 902-394-4168, JA-1 (FSII avbl) 09-00Z± O/T call out chg will apply. Fax/tel: 902-566-3835. Duty tel: 902-629-0906 aft hr 902-393-1792
OIL	All
S	1,2
ARFF	DESIGNATED CAT 6 (CAT 7, 2 hr PN) 1015-0415Z±, O/T call out chg.
SUP FL	D & A-ice
MIL CON	Aircraft Services International Group 902-566-3835
RWY DATA	Rwy 03(027°)/21(207°) 7002x150 ASPH Rwy 10(097°)/28(277°) 7000x150 ASPH RESA: 03/21 492'; 10/28 492'
RWY CERT	Rwy 03 RVR 1200(1/4sm)/Rwy 21 RVR 1200(1/4sm) AGN IV Rwy 10 RVR 1200(1/4sm) Day only/Rwy 28 RVR 1200(1/4sm) Day only AGN IV
APRON	Apron I: Uncontrolled. Avbl to sked pax flt and 705 ops, all other ppr 902-566-7997 for aprt parking. Numbered parking stands req marshall in and push-back out (Stands 1,2,3,4 and 5). All acft must yield to acft in push-back from ATB.
RCR	Opr AMSCR 1015-0415Z±

PRINCE EDWARD ISLAND

AERODROME / FACILITY DIRECTORY

CHARLOTTETOWN PE (Cont'd)

CYYG

LIGHTING	03-AN(TE HI) P2, 21-AO(TE HI) P2, 10-AO(TE ME) P2, 28-AO(TE ME) P2
COMM	
RADIO	118.0 PTC avbl (E) (emerg only 902-368-2210)
RCO	London rdo 123.55 (FISE) 126.7 (bcst)
MF	rdo 118.0 5NM 3200 ASL (CAR 602.98)
PAL	Moncton Ctr 135.65
NAV	
DME	YYG 113.8 Ch 85 N46 17 52 W63 07 11 (206°)
ILS	IYG 110.9 (Rwy 03) RVR LOC reliable only within 10° either side of centreline.
PRO	Caution during win ops: Twy C may be the only serviceable twy. Pilots should refer to Canadian Airport Charts (CAC) to obtain details on established hot spots, prior to operating on maneuvering areas. CAC are available for free on the NAV CANADA website.