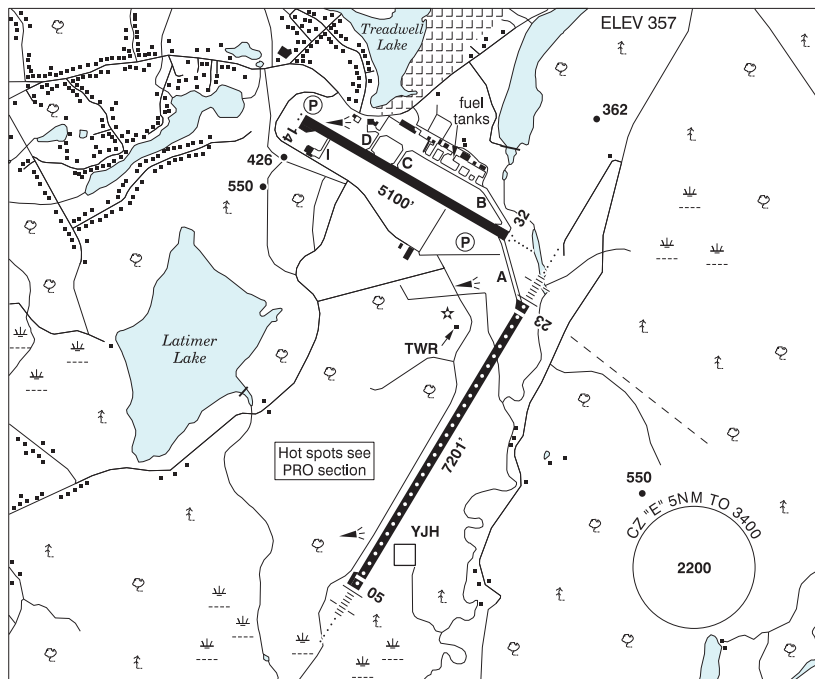


**NEW BRUNSWICK**

**AERODROME / FACILITY DIRECTORY**

**SAINT JOHN NB**

**CYSJ**



<b>REF</b>	N45 18 57 W65 53 24 8ENE 18°W (2014) UTC-4(3) Elev 357' A5003 LO8 HI6 CAP OC
<b>OPR</b>	Saint John Airport Inc 506-638-5555 0930-0359Z± Cert
<b>PF</b>	A-1,2,3,6,7 09-04Z± C-4,5
<b>CUST</b>	AOE/120 (140 with staged off-loading) 888-226-7277 12-04Z±
<b>FLT PLN</b>	<p><b>FIC</b> London 866-WXBRIEF (Toll free within Canada) or 866-541-4104 (Toll free within Canada &amp; USA)</p> <p><b>ACC</b> (IFR only) Moncton 506-867-7177 or 866-480-8200.</p> <p><b>WX</b> METAR H24 TAF H24, issue times: 00, 06, 12, 18Z</p>
<b>SERVICES</b>	Call out chg may be levied for one or more svcs
<b>FUEL</b>	100LL H24 self-serve, JA (FSII avbl) 12-21Z± Mon-Fri, JA-1 (FSII avbl) 08-24Z±
<b>OIL</b>	All
<b>S</b>	1(ltd, for lgt acft),2,4,5,6
<b>ARFF</b>	PARTICIPATING CAT 5 10-04Z±, O/T call out chg.
<b>JASU</b>	CE8, CA2
<b>PVT ADV</b>	Atlantic Flt Centre 123.3 12-21Z± Mon-Fri 506-634-5565 O/T 506-650-8402, exc hols; Air Canada Ground Handling 130.37 506-632-1524
<b>MIL CON</b>	ASIG Canada (Irving Oil) 506-653-7409

## NEW BRUNSWICK

## AERODROME / FACILITY DIRECTORY

## SAINT JOHN NB (Cont'd)

CYSJ

<b>RWY DATA</b>	Rwy 05(049°)/23(229°) 7201x148 ASPH Thlds 05 & 23 displ 197' Rwy 14(138°)/32(318°) 5100x148 ASPH Rwy 14 down 0.84% Rwy 14/32 avbl as twy dur night when Rwy 05/23 RVR 1200(1/4sm) down to 600(1/8sm) RESA: All Rwys 492'
<b>RWY CERT</b>	Rwy 05 RVR 600(1/8sm)/Rwy 23 RVR 600(1/8sm) AGN IV Rwy 14 RVR 1200(1/4sm)/Rwy 32 RVR 1200(1/4sm) AGN IV
<b>TWY CERT</b>	Twy I AGN IIIB
<b>TWY</b>	Twy I Pvt
<b>RCR</b>	Opr CRFI and win maint avbl ltd hrs. PLR/PCN
<b>LIGHTING</b>	05-AN(TE HI CL), 23-AN(TE HI CL), 14-AS(TE ME) P2, 32-AO(TE ME) P2
<b>COMM</b>	
<b>RADIO</b>	118.5 236.6 PTC avbl (E) (emerg only 506-646-7225)
<b>RCO</b>	London rdo 123.475 (FISE) 126.7 (bcst)
<b>MF</b>	rdo 118.5 5NM 3400 ASL (CAR 602.98)
<b>PAL</b>	Moncton Ctr 124.3 135.5 270.8
<b>NAV</b>	
<b>DME</b>	YJH 112.2 Ch 59 N45 18 15 W65 53 28 (312')
<b>ILS</b>	ISJ 110.5 (Rwy 23) RVR LOC reliable only within 10° either side of centreline; IDM 108.3 (Rwy 05) RVR LOC reliable only within 10° either side of centreline.
<b>PRO</b>	Pursuant to CAR 602.96, in vis conds blw 1/8sm with an RVR of 600 or greater, an IFR clnc must be obtained prior to taxiing for dep and acft are not auth to taxi when another acft is on the maneuvering area, or on apch to any rwy. Ctc CYSJ FSS for tfc status. Pilots should refer to Canadian Airport Charts (CAC) to obtain details on established hot spots, prior to operating on maneuvering areas. CAC are available for free on the NAV CANADA website. <b>Reduced/Low Visibility Procedures:</b> See CAP